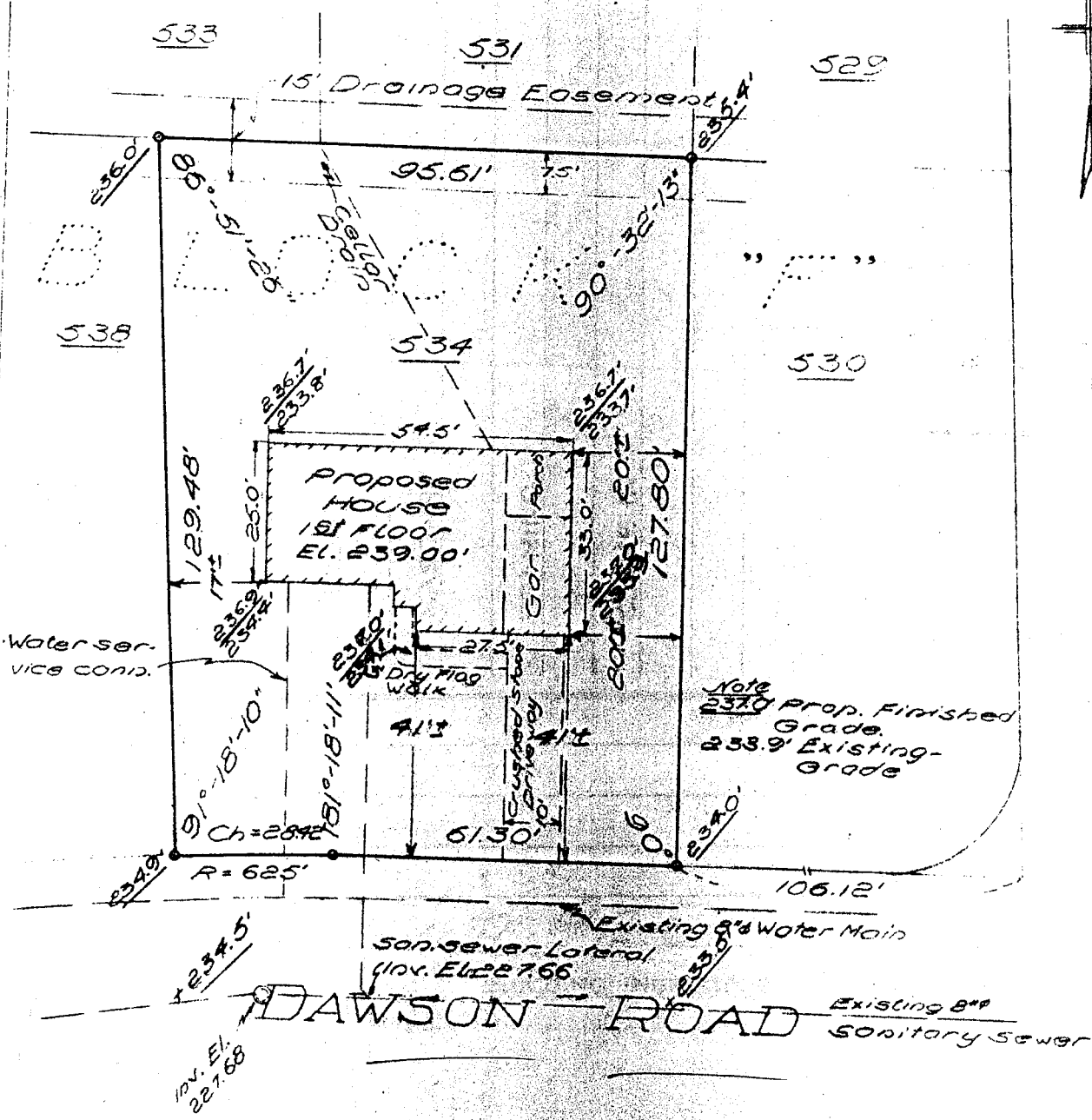


See "MAP OF PORTION OF 'KENAWARE' SECTION NO. 1 PROPERTY OF CHARLES BUCHMAN", dated March 23, 1955, revised June 7, 1955 and made by Edward W. Boutelle and Son, Civil Engineers and Surveyors.

ST. CLAIR DRIVE



MAP OF PROPERTY OF
DOMINIC TRISCHETTA
DELMAR

ALBANY COUNTY
SCALE: 1" = 30'

NEW YORK
SEPTEMBER 25, 1956

SURVEY AND MAP BY:

534 Dawson

Edward W. Boutelle & Son
Civil Engineers and Surveyors
Delmar, New York
New York State License