

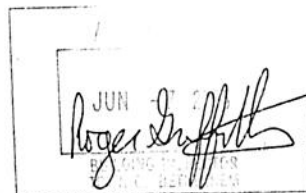
Now or Formerly Charles Whitbeck

I.P. Set S 57° 05' W 283.14'

36° Elm

Area = 2.0± Ac.

Stahlman

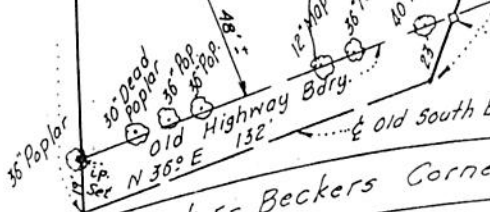
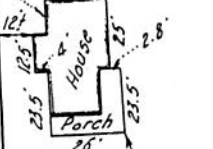


Now or Formerly Charles Whitbeck

462'

S 33° 25' E

85' garage



stone Mon.

John P. Barth (Formerly N. Lawton)

N 12° 30' W 442.2'

Tree Line & R

UTE 9W Bethlehem Center-Beckers Corners State Highway
S 45° 30' W 138.07' Old Highway Bdry. 152' Old South Bethlehem Plank Road

MAP SHOWING LANDS OF DONALD C. & JOAN E. STAHLMAN

TOWN OF BETHLEHEM, ALBANY CO., N.Y. SCALE 1" = 50' AUG. 5, 1961

William S. Christman L.S.P.E. 25852