

CEDAR HILL EXTENSION
 WATER DISTRICT NO. 1
 TOWN OF BETHELEM
 RECORD OF INSTALLATION
 SCALE: 1"=60' JANUARY 1967
 LEONETH FRISER, DISTRICT ENGINEER
 CONSULTING ENGINEERS, BENSBAUER, N.Y.

R.I. 144
 WIDTH 50'
 5'1"



RT. 144

RT. 144

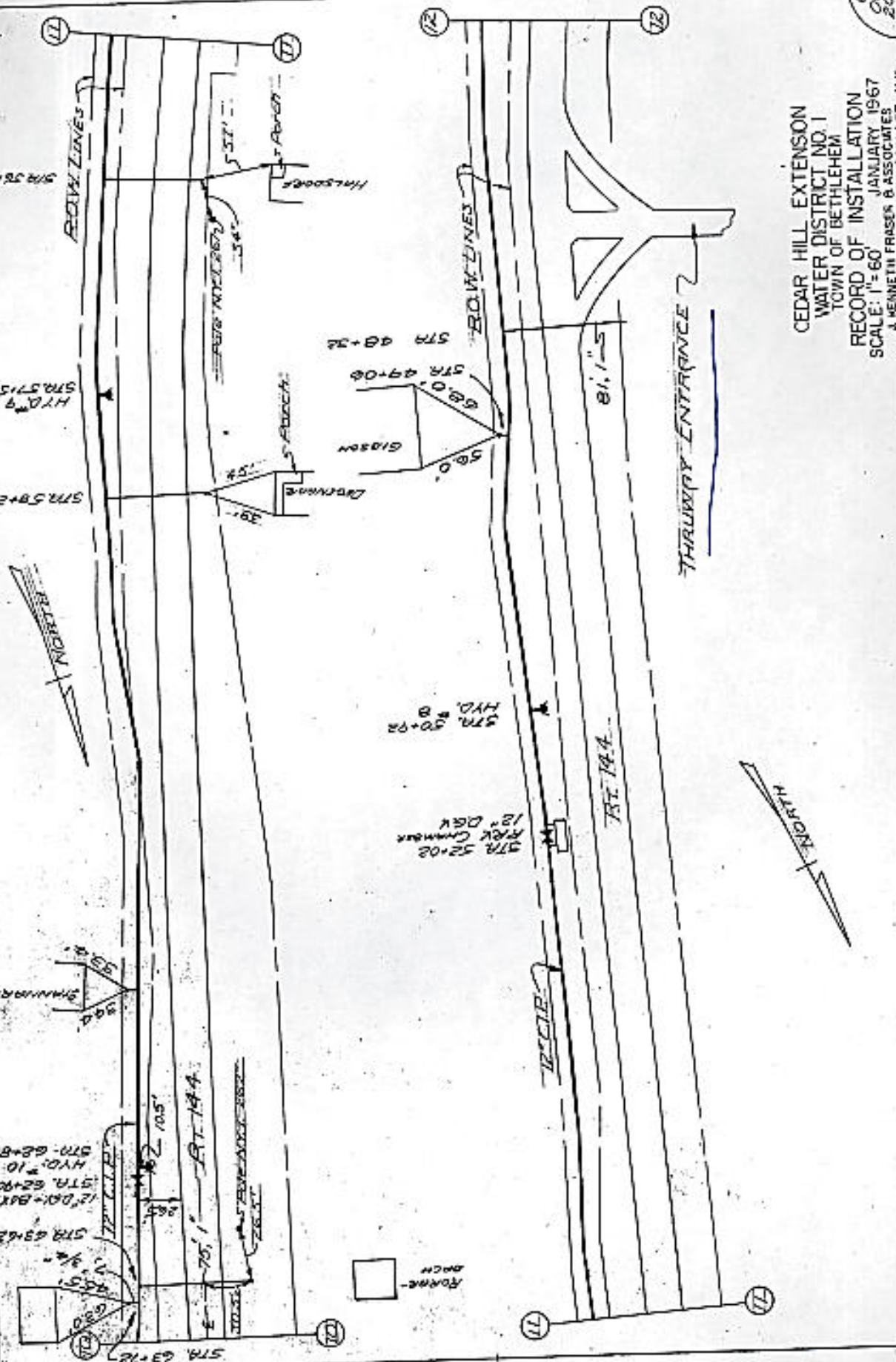
RT. 144

RT. 144

RT. 144

RT. 144

RT. 144



STA. 52+02
 12" DIA. BKX
 STA. 52+00
 HYD. # 10
 STA. 52+05

STA. 52+08
 12" DIA. BKX
 STA. 52+00
 HYD. # 10
 STA. 52+05

STA. 49+08
 12" DIA. BKX
 STA. 49+00
 HYD. # 10
 STA. 49+05

STA. 48+32
 12" DIA. BKX
 STA. 48+00
 HYD. # 10
 STA. 48+05

STA. 58+26
 12" DIA. BKX
 STA. 58+00
 HYD. # 10
 STA. 58+05

STA. 57+15
 12" DIA. BKX
 STA. 57+00
 HYD. # 10
 STA. 57+05

STA. 56+05
 12" DIA. BKX
 STA. 56+00
 HYD. # 10
 STA. 56+05

CEDAR HILL EXTENSION
 WATER DISTRICT NO. 1
 TOWN OF BETHLEHEM
 RECORD OF INSTALLATION
 SCALE: 1"=60'
 JANUARY 1967
 J. KENNETH FRASER & ASSOCIATES
 CONSULTING ENGINEERS, HENSCHELAR, N.Y.