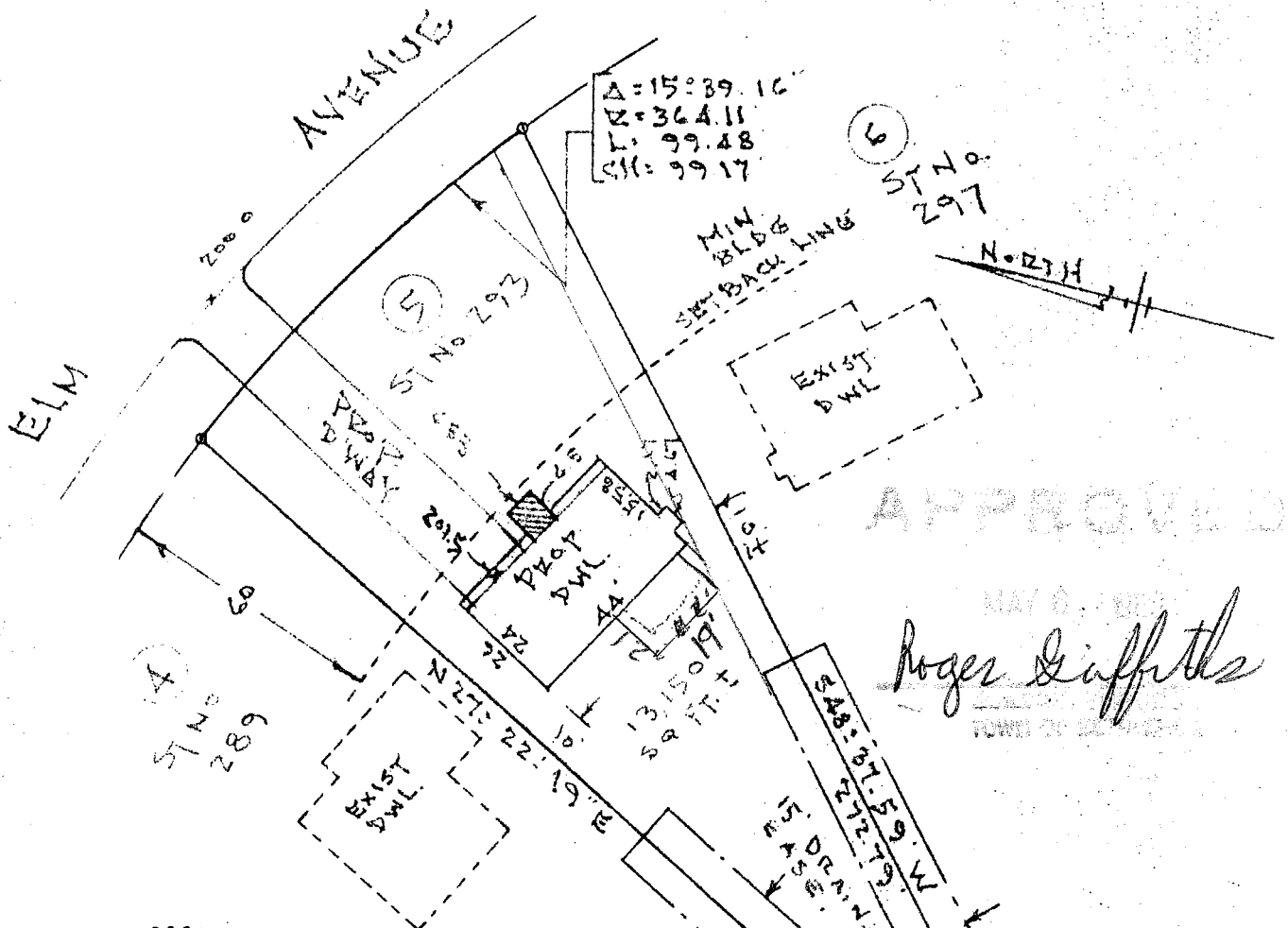


E

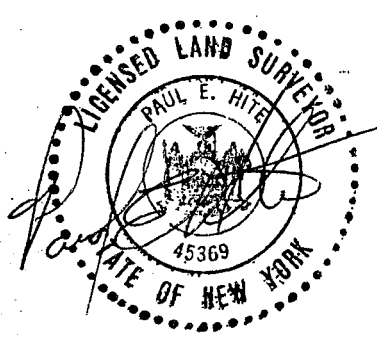
See map entitled, "ELMWOOD SUBDIVISION, TOWN OF BETHLEHEM, ALBANY COUNTY", dated September 20, 1977, prepared by David C. Elliott, filed in the Albany County Clerk's Office on March 3, 1978, in Drawer No. 169 as Map No. 5399.

CERTIFICATION: Survey shown is in accordance with the minimum standards of "CODE OF PRACTICE FOR LAND SURVEYS" as adopted by the New York State Association of Professional Land Surveyors.



APPROVED

Roger Griffiths



APPROVED

OCT 19 1983

James J. Russell
BUILDING INSPECTOR
TOWN OF BETHLEHEM

COUNTY	MAP OF LOT NUMBER 4 STREET NUMBER 293 ELM AVENUE TOWN OF BETHLEHEM	SCALE
ALBANY		1" = 40 ft.
STATE	PAUL E. HITE LICENSED LAND SURVEYOR ----- DELMAR, N.Y.	DATE
NEW YORK		SEPT. 17, 1983
ORDER NO.		REVISION