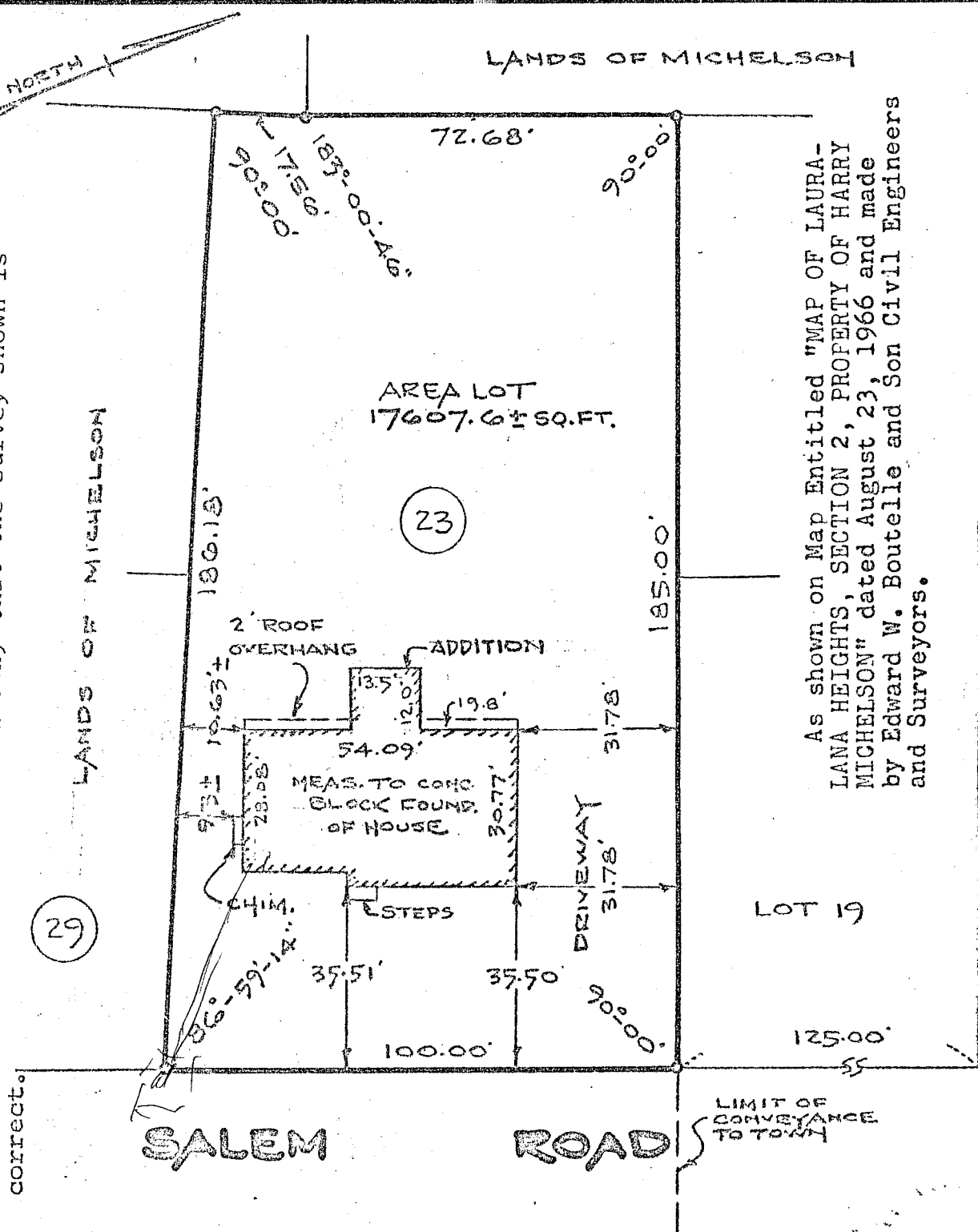


We hereby certify to Inter-County Title Guaranty and Mortgage Company and the State Bank of Albany that the survey shown is correct.



As shown on Map Entitled "MAP OF LAURA-LANA HEIGHTS, SECTION 2, PROPERTY OF HARRY MICHELSON" dated August 23, 1966 and made by Edward W. Boutelle and Son Civil Engineers and Surveyors.

NOTE  
COMPLETED HOUSE LOCATION

*Edward W. Boutelle*

COUNTY ALBANY	MAP OF PROPERTY OF ARNULF AND MARYANN KOEPPEN TOWN OF BETHLEHEM	SCALE 1" - 30'
STATE NEW YORK		DATE AUG. 22, 1966
ORDER NO. 66-610		EDWARD W. BOUTELLE AND SON CIVIL ENGINEERS AND SURVEYORS DELMAR, NEW YORK