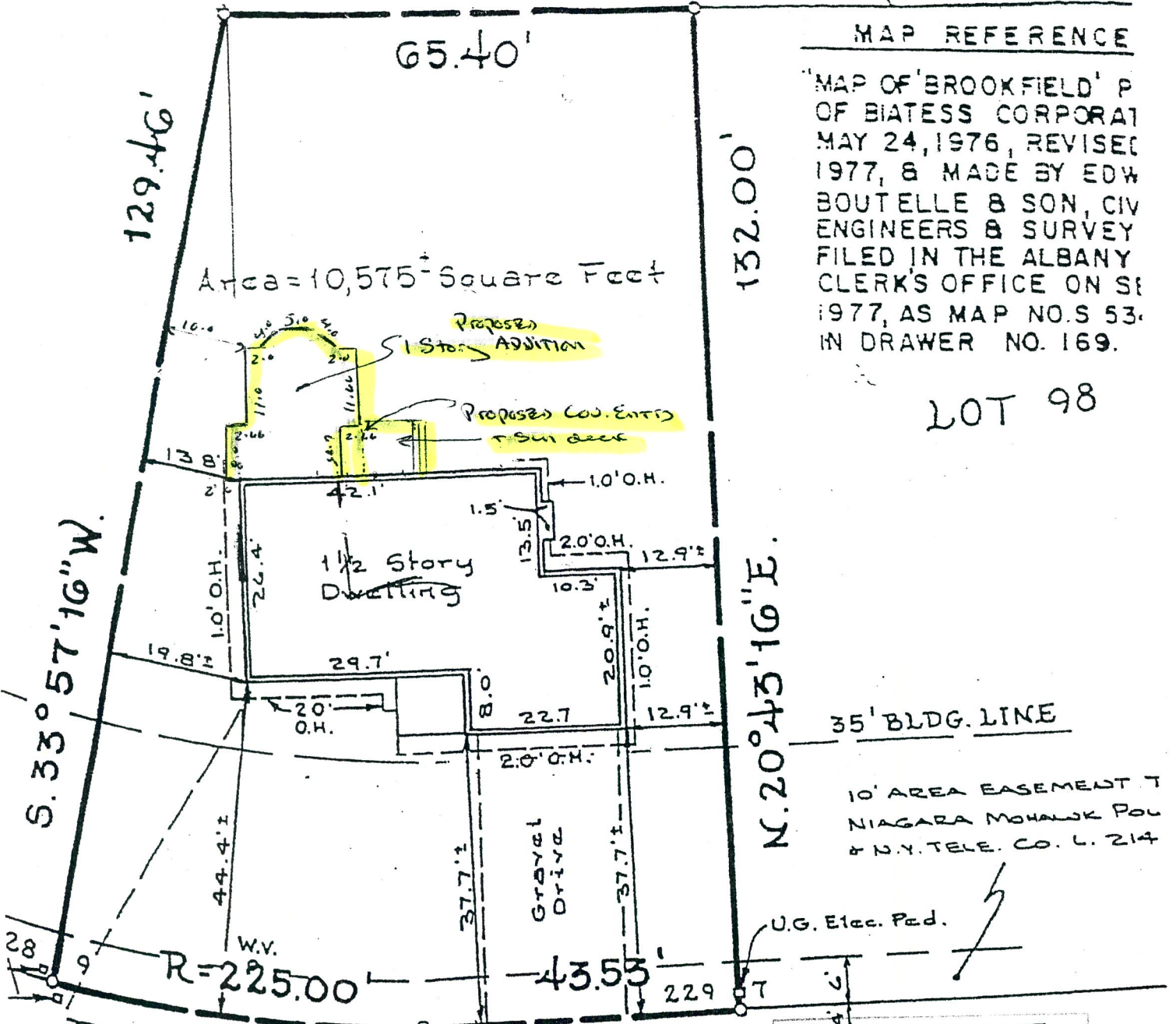


MAP REFERENCE

"MAP OF 'BROOKFIELD' P
OF BIATESS CORPORAT
MAY 24, 1976, REVISED
1977, & MADE BY EDW
BOUTELLE & SON, CIV
ENGINEERS & SURVEY
FILED IN THE ALBANY
CLERK'S OFFICE ON SE
1977, AS MAP NO. S 53.
IN DRAWER NO. 169.

LOT 98



Area = 10,575 Square Feet

Proposed 1-Story Addition

Proposed Cov. Entry

1 1/2 Story Dwelling

Gravel Drive

35' BLDG. LINE

10' AREA EASEMENT T
NIAGARA MOHAWK POW
& N.Y. TELE. CO. L. 214

U.G. Elec. Ped.

S. 33° 57' 16" W.

N. 20° 43' 16" E.

R = 225.00

$\Delta = 13^\circ 14' 00''$ L = 51.97 S. 69° 16' 44" E.
S. 62° 39' 44" E. CK = 51.85'

MAR 03 1975
Royer
BUILDING DEPARTMENT

LONGMEADOW DRIVE
(50' R.O.W.)

DRIVE

1" = 20'

CORPORATION

1-21-86
37 DATE