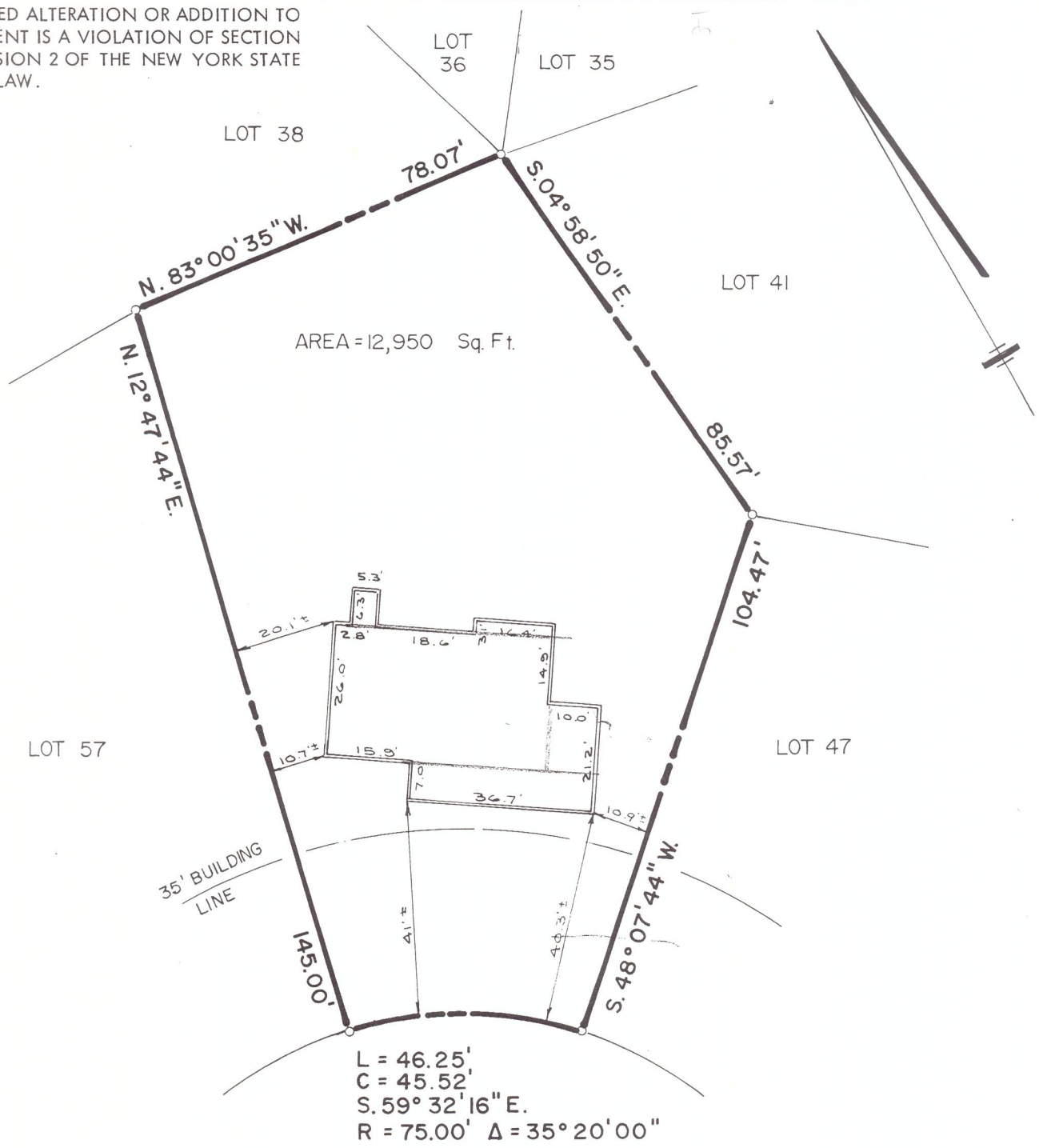



UNAUTHORIZED ALTERATION OR ADDITION TO THIS DOCUMENT IS A VIOLATION OF SECTION 7209 SUBDIVISION 2 OF THE NEW YORK STATE EDUCATION LAW.



WAKEFIELD COURT

MAP REFERENCE:

"MAP OF BROOKFIELD, PROPERTY OF BIATESS CORPORATION" DATED MAY 24, 1976 BY EDWARD W. BOUTELLE & SON, MAP NO. 1-2T-J8-52-9-R
REVISED TO JAN. 11, 1979

DATE	DESCRIPTION	APPR.	LOT 55 - WAKEFIELD COURT	
8/2/83	PROP. BLDG. LOC. / HODOROWSKI.	PKM	BROOKFIELD	
9.9.83	FOUNDATION LOC. / HODOROWSKI	PKM	PROPERTY OF BIATESS CORPORATION	
9.22.83	REVISED FOUND. LOC. / HODOROWSKI	PKM	TOWN OF BETHLEHEM	COUNTY OF ALBANY, NY
			SCALE: 1" = 30'	DATE: AUGUST 2, 1983
DRAWN BY: DLP			 C. T. MALE ASSOCIATES, P. C. 3000 TROY ROAD, SCHENECTADY, N. Y. 12309 <small>PROFESSIONAL ENGINEERS LAND SURVEYORS LAND PLANNING CONSULTANTS</small>	
CHECKED BY: PKM				
APPROVED BY: Paul K. Male			LIC. NO. 49227	