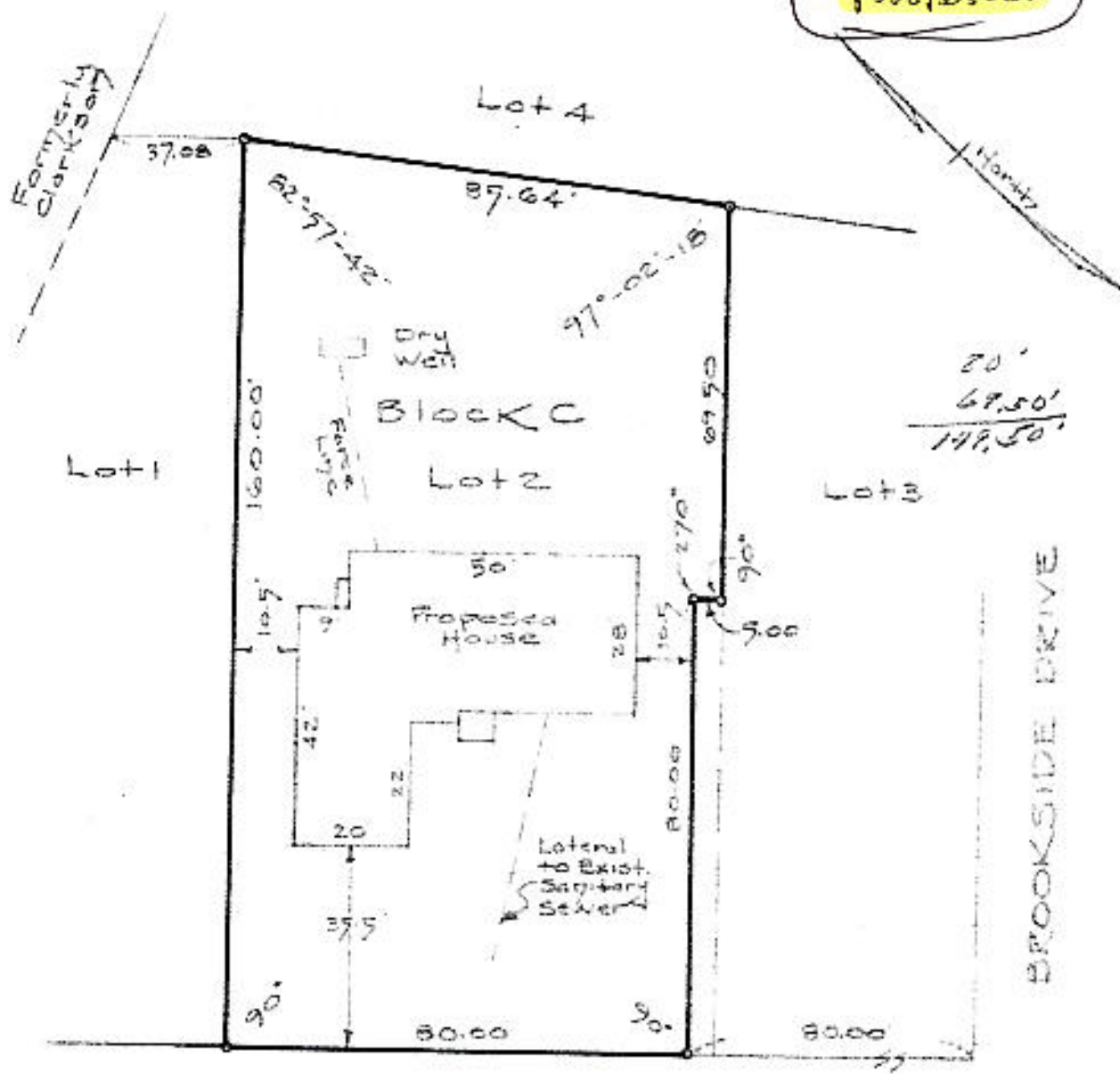


See "MAP OF RESIDENTIAL BUILDING LOTS, SEBASTIAN ALBRECHT PROPERTY" dated April 10, 1937, made by William D. Jordan, Licensed Engineer, and filed in the office of the Albany County Clerk April 24, 1937.

Proposed



FERNBANK AVENUE

*Bldg. Dept
Office Copy*

COUNTY ALBANY	MAP OF PROPERTY OF KLEBSY BUILDING CORP. DELMAR	SCALE 1" = 30'
STATE NEW YORK		DATE April 23, 1963
ORDER NO 0419	EDWARD W. BOUTELLE AND SON CIVIL ENGINEERS AND SURVEYORS DELMAR, NEW YORK	REVISION