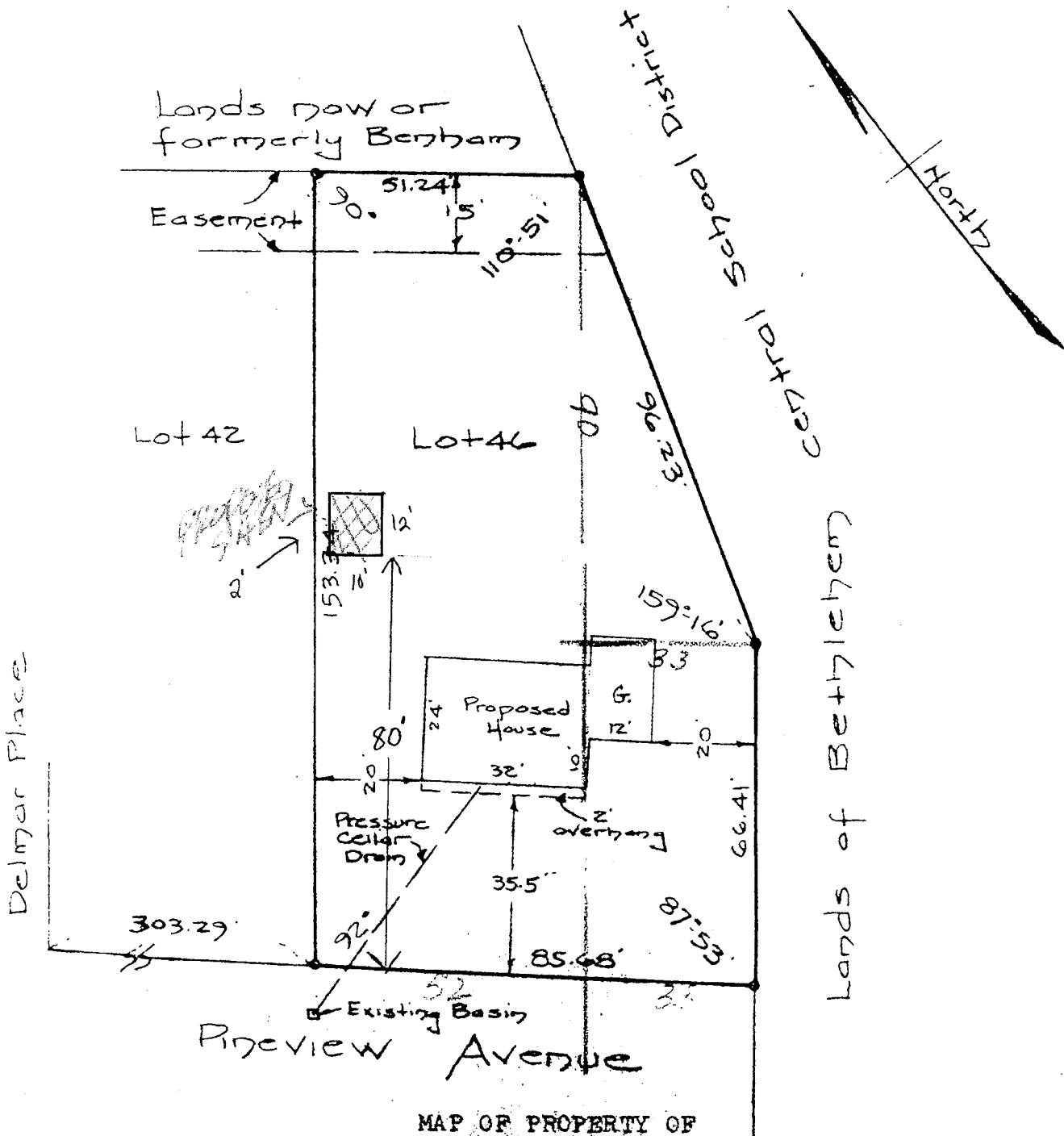


# OFFICE COPY

As shown on Map of "PROPERTY OF VAN WOERT & SON, INC.", dated Nov. 19, 1958, revised Feb. 27, 1959, and made by Edward W. Boutelle & Son, Civil Engineers and Surveyors.

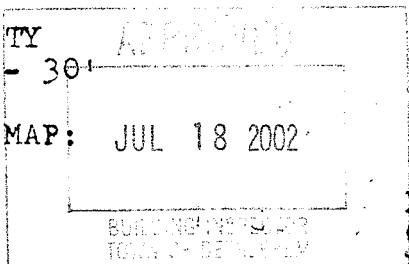


MAP OF PROPERTY OF  
VAN WOERT & SON, INC.  
DELMAR

ALBANY COUNTY  
SCALE: 1" = 30'

NEW YORK  
SEPTEMBER 2, 1959

SURVEY AND MAP: JUL 18 2002



Edward W. Boutelle & Son  
Civil Engineers and Surveyors  
Delmar, New York