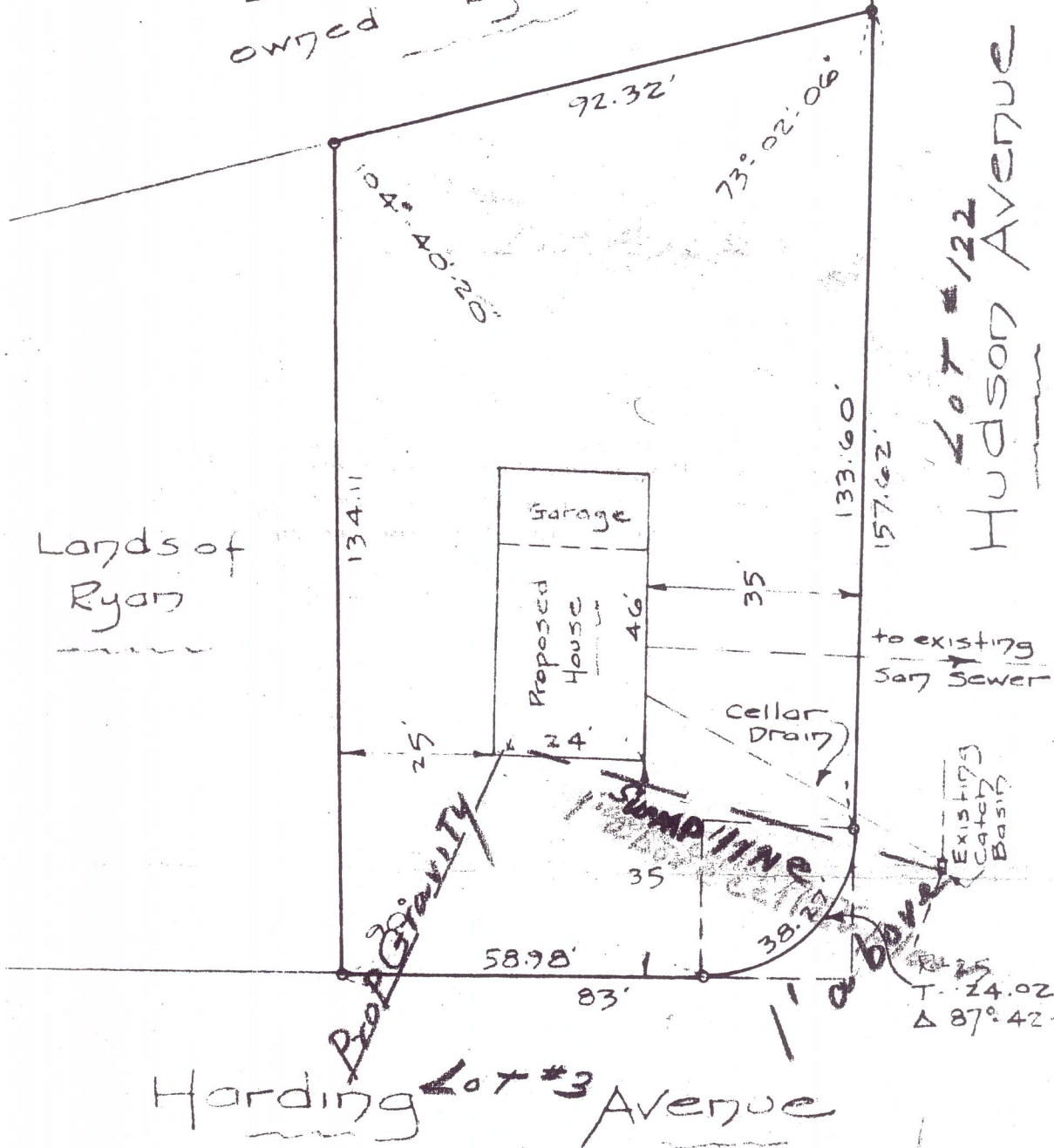


Lands reputedly
owned by Wood



MAP OF PROPERTY
TO BE CONVEYED TO
WALTER S. WRIGHT, JR.
DELMAP

ALBANY COUNTY
SCALE: 1" = 30'

NEW YORK
JANUARY 9, 1959

SURVEY AND MAP BY:

Edward W. Boutelle & Son
Civil Engineers and Surveyors