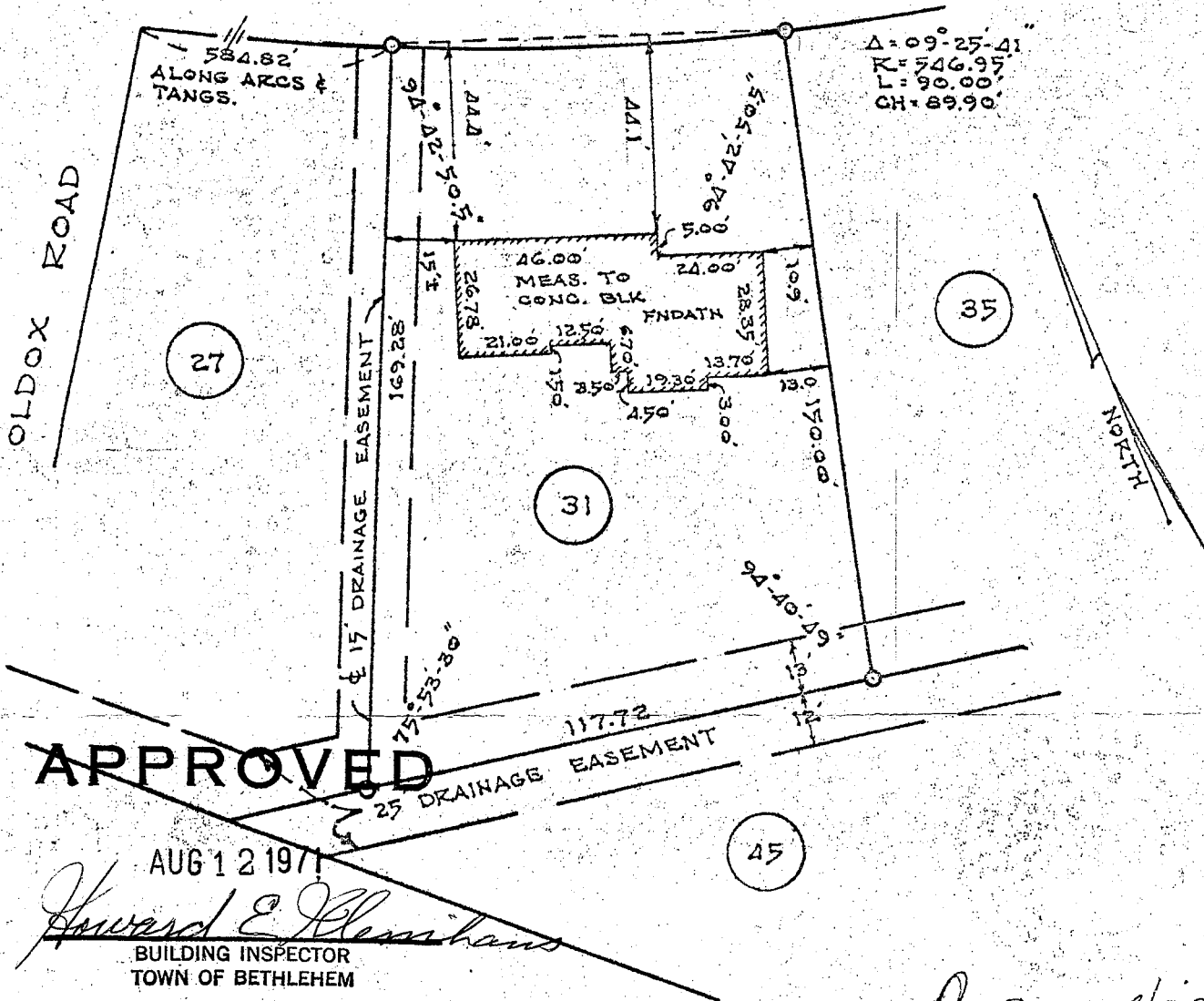


See map entitled, "MAP OF VILLAGE PARK SECTION-1 PROPERTY OF SUBURBAN PLANNERS, INC." dated October 1, 1968, made by Edward W. Boutelle and Son Civil Engineers and Surveyors and filed in the Albany County Clerk's Office on November 24, 1969 as map number 4606 drawer number 165.

# TAMARACK DRIVE



$\Delta = 09^{\circ}25'41''$   
 $R = 546.95'$   
 $L = 90.00'$   
 $CH = 89.90'$

**APPROVED**

AUG 12 1971

*Howard E. Henshaw*  
 BUILDING INSPECTOR  
 TOWN OF BETHLEHEM

*Paul E. Hite*

NOTE: FOUNDATION LOCATION ONLY.

COUNTY	MAP OF PROPERTY OF NORMANSKILL DEVELOPMENT CORP. TOWN OF BETHLEHEM  PAUL E. HITE & WILLIAM F. MOSER, LICENSED LAND SURVEYORS 205 DELAWARE AVENUE DELMAR, NEW YORK	SCALE
Albany		1"=40'
STATE		DATE
New York		April 30, 1971
ORDER NO.		REVISION
71-76		