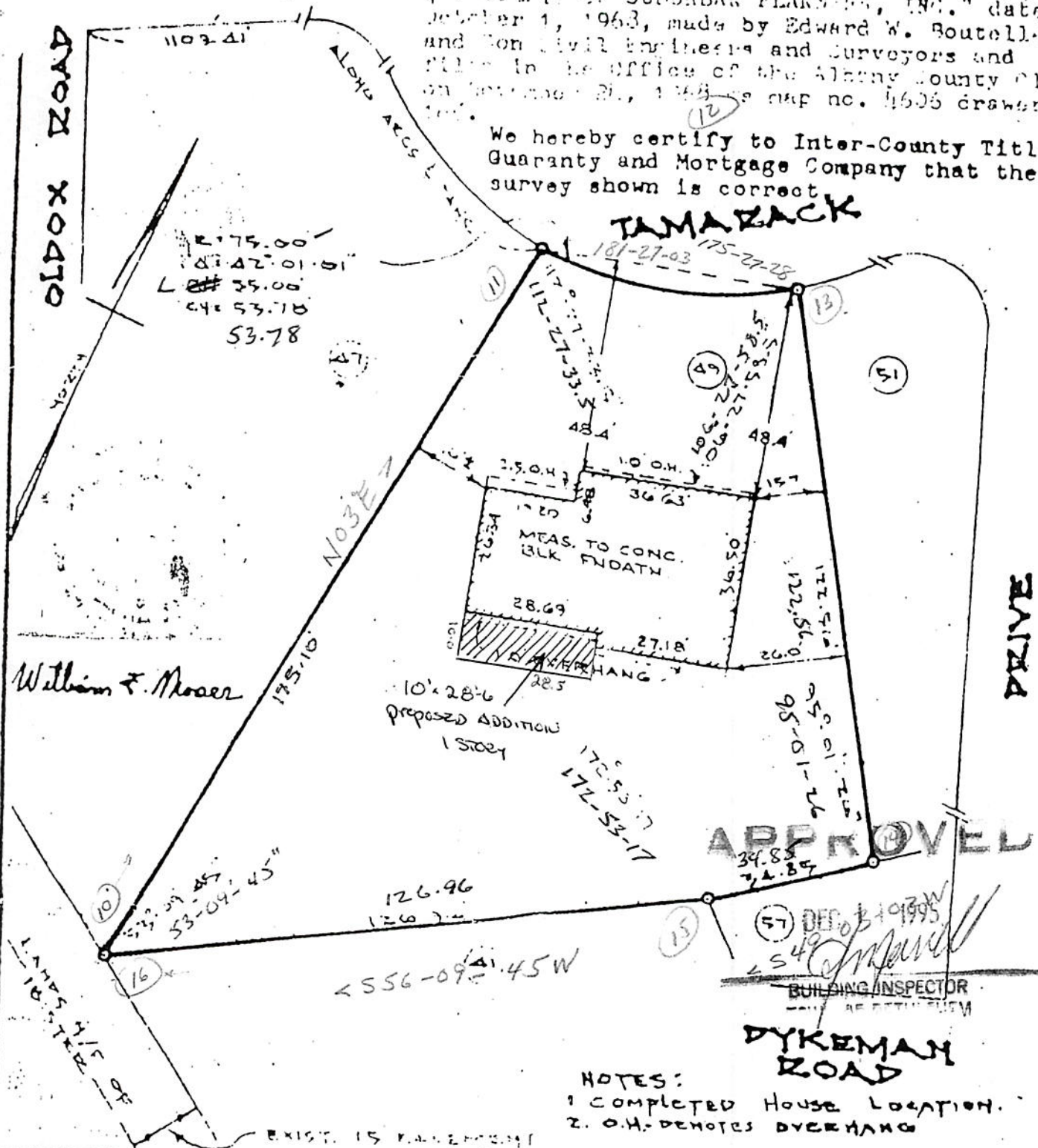


1 to Day  
2 to Sheet 11/10/70

See map entitled "MAP OF VILLAGE PARK SECTION-4 PROPERTY OF SUBURBAN PLANNING, INC." dated October 1, 1963, made by Edward W. Boutelle and Son Civil Engineers and Surveyors and filed in the office of the Albany County Clerk on September 21, 1963 as map no. 4606 drawer no. 100.

We hereby certify to Inter-County Title Guaranty and Mortgage Company that the survey shown is correct.

**TAMARACK**



**APPROVED**

DEC 10 1970  
 49  
 BUILDING INSPECTOR  
 ALBANY COUNTY

**DYKEMAN ROAD**

NOTES:  
 1. COMPLETED HOUSE LOCATION.  
 2. O.H. DENOTES DYKEMAN

County: Albany	No 49 Tamarack	Scale: 1"=30'
State: New York	APPROX: 55' X 122' X 161' X 175'	Date: Oct. 12, 1970
Order No.	WILLIAM F. MOSEER	Division: