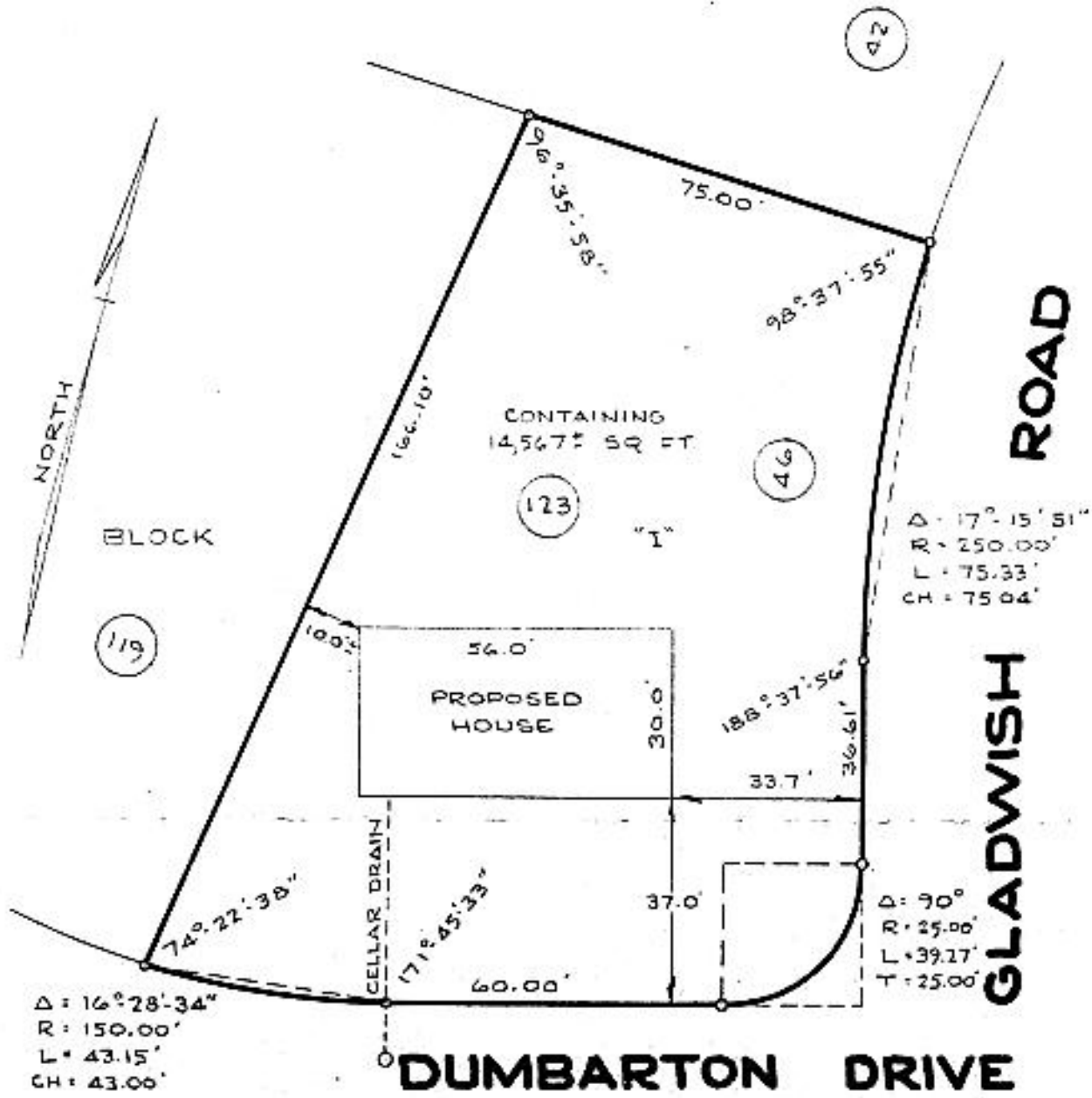


As shown on "Map of 'Kenholm' Section 6, Property of Kenholm Construction Corporation", dated April 21, 1965, revised June 16, 1965 and made by Edward W. Boutelle & Son, Civil Engineers and Surveyors.



COUNTY ALBANY	MAP OF PROPERTY OF VAN WOERT & SON ELSMERE	SCALE 1" = 30'
STATE NEW YORK		DATE Nov. 2, 1965
ORDER NO. 11680	EDWARD W. BOUTELLE AND SON CIVIL ENGINEERS AND SURVEYORS DELMAR, NEW YORK	REVISION