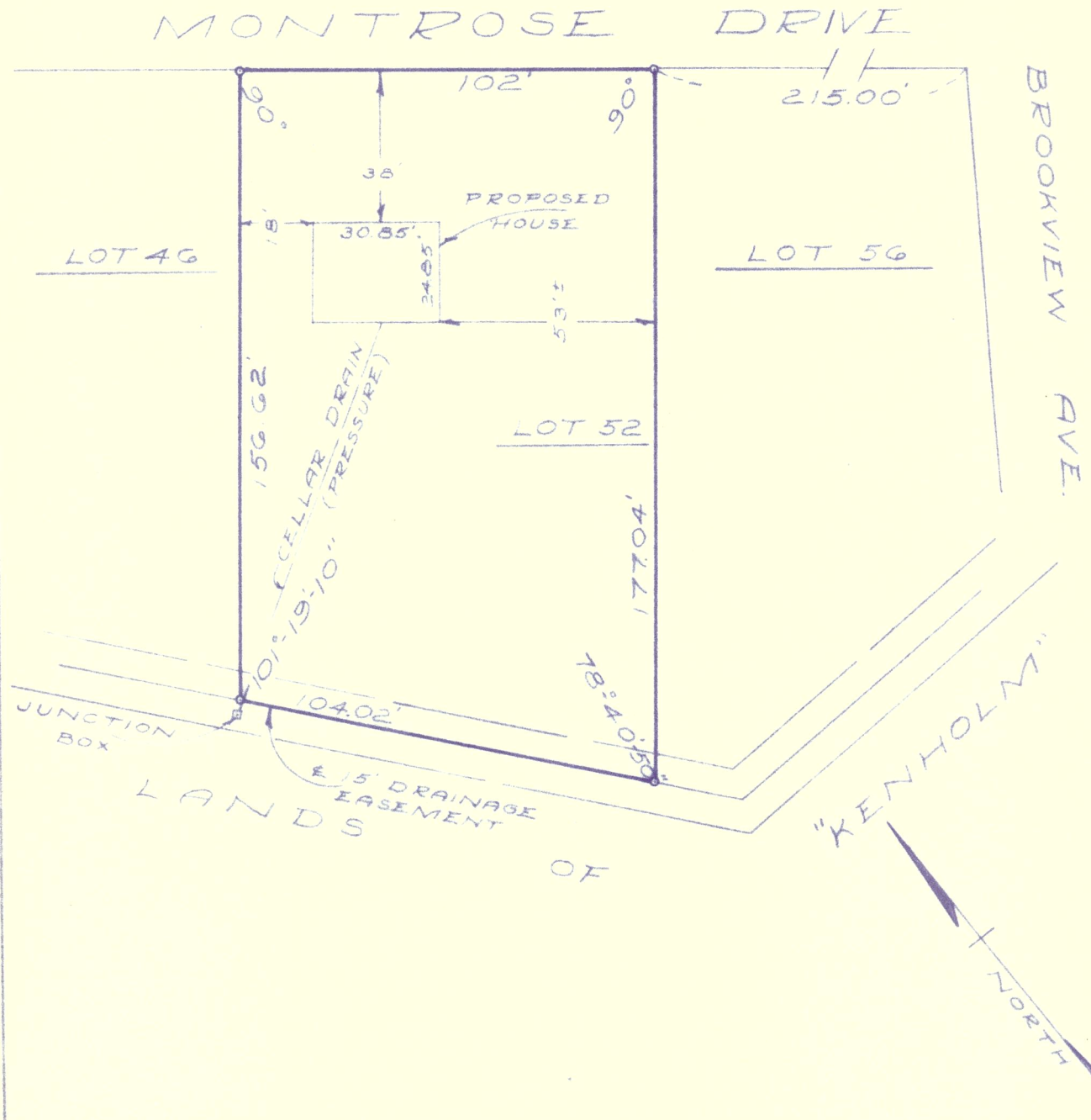


As shown on "MAP OF PORTION OF 'KENHOLM', SECTION 2, PROPERTY OF HAROLD J. MAGEE", dated November 18, 1957 and made by Edward W. Boutelle & Son, Civil Engineers and Surveyors.



MAP OF PROPERTY OF  
WILLIAMS BROS.  
ELSMERE

ALBANY COUNTY  
SCALE: 1" - 40'

NEW YORK  
APRIL 30, 1962

SURVEY AND MAP BY: