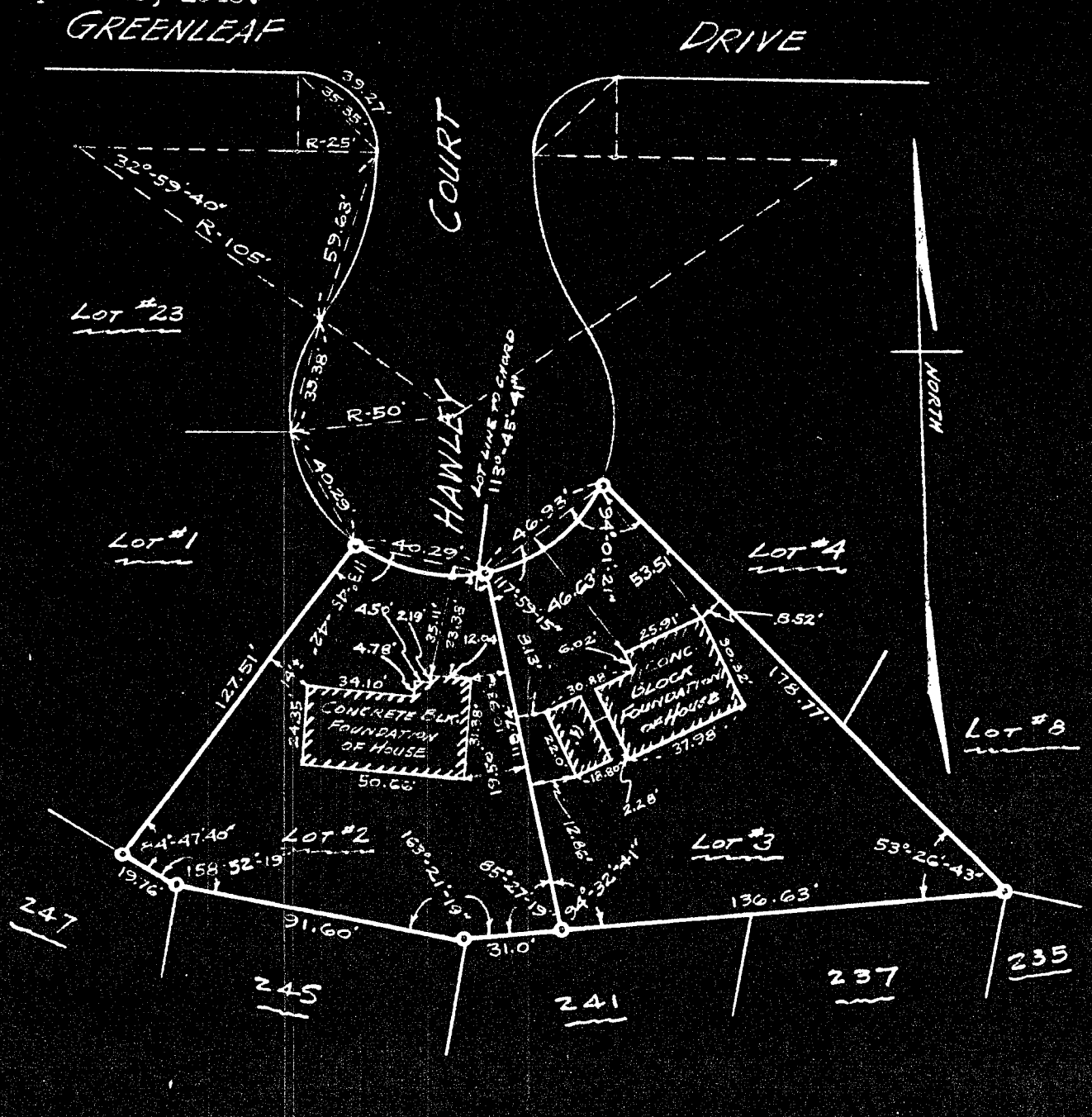


As shown on a map entitled, "MAP OF ELSMERE DOWNS", PROPERTY OF EDWARD W. L. CRANNELL," dated February 20, 1948, and made by Edward W. Boutelle & Son, Civil Engineers and Surveyors; revised April 29, 1948.



MAP OF PROPERTIES OF
FRANK WILLIAMS
ELSMERE

ALBANY COUNTY
SCALE 1" - 50'

NEW YORK
NOVEMBER 1, 1951

SURVEY AND MAP BY:

Edward W. Boutelle & Son
Civil Engineers and Surveyors
Delmar, New York
New York State License