

M

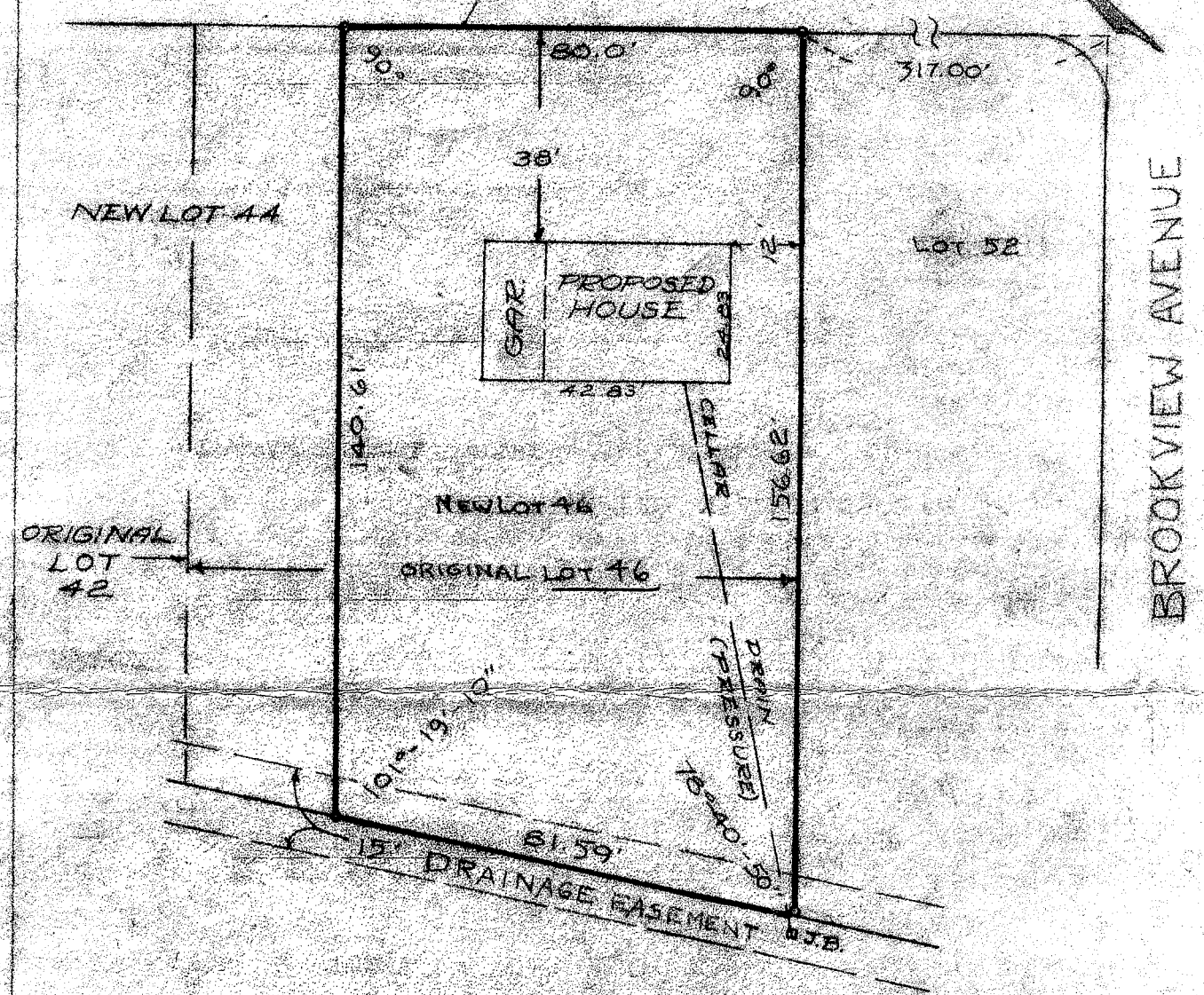
See map entitled, "MAP OF PORTION OF 'KENHOLM', SECTION 2, PROPERTY OF HAROLD S. MAGEE", dated November 18, 1957 and made by Edward W. Boutelle & Son, Civil Engineers and Surveyors.

8" AC Sanitary Sewer

Ex. Lateral
31.055

MONTROSE DRIVE

North



MAP OF PROPERTY OF
WILLIAM BROS. BUILDERS
ELSMERE

ALBANY COUNTY
SCALE: 1" = 30'

NEW YORK
OCTOBER 13, 1961

SURVEY AND MAP BY:

Edward W. Boutelle & Son
Civil Engineers and Surveyors
Delmar, New York
New York State License