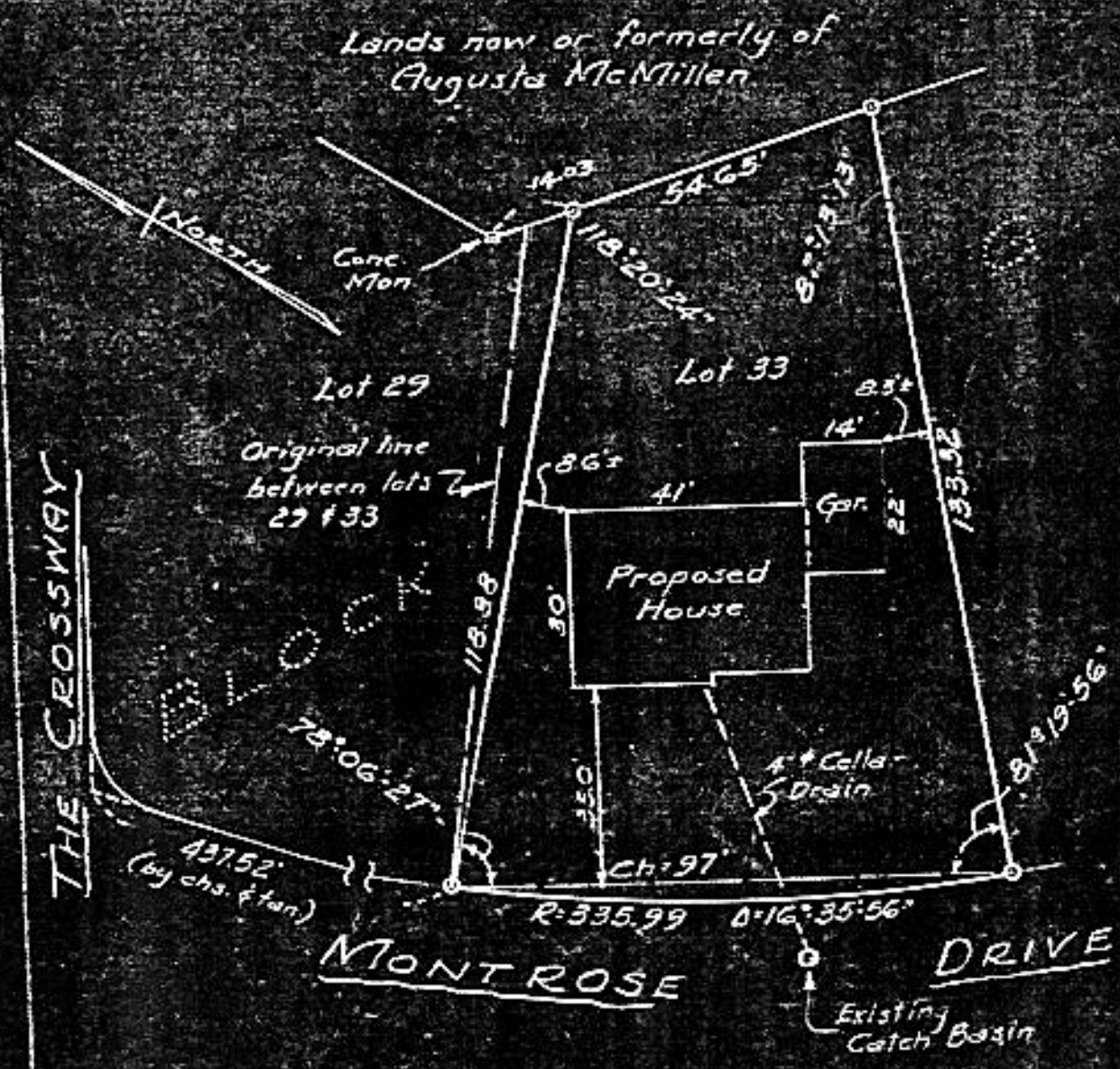


As shown on "MAP OF PORTION OF 'BLOOMING' ...
 HAROLD J. MAGEE", dated March, 1951, revised June 21, 1954, and
 made by Edward W. Boutelle & Son, Civil Engineers and Surveyors.



MAP OF PROPERTY OF
 COBURN REALTY CORPORATION
 ELSMERE

ALBANY COUNTY
 SCALE 1" = 20'

NEW YORK
 JUNE 28, 1955

SURVEY AND MAP BY:

Edward W. Boutelle & Son
 Civil Engineers and Surveyors
 Delmar, New York
 New York State License