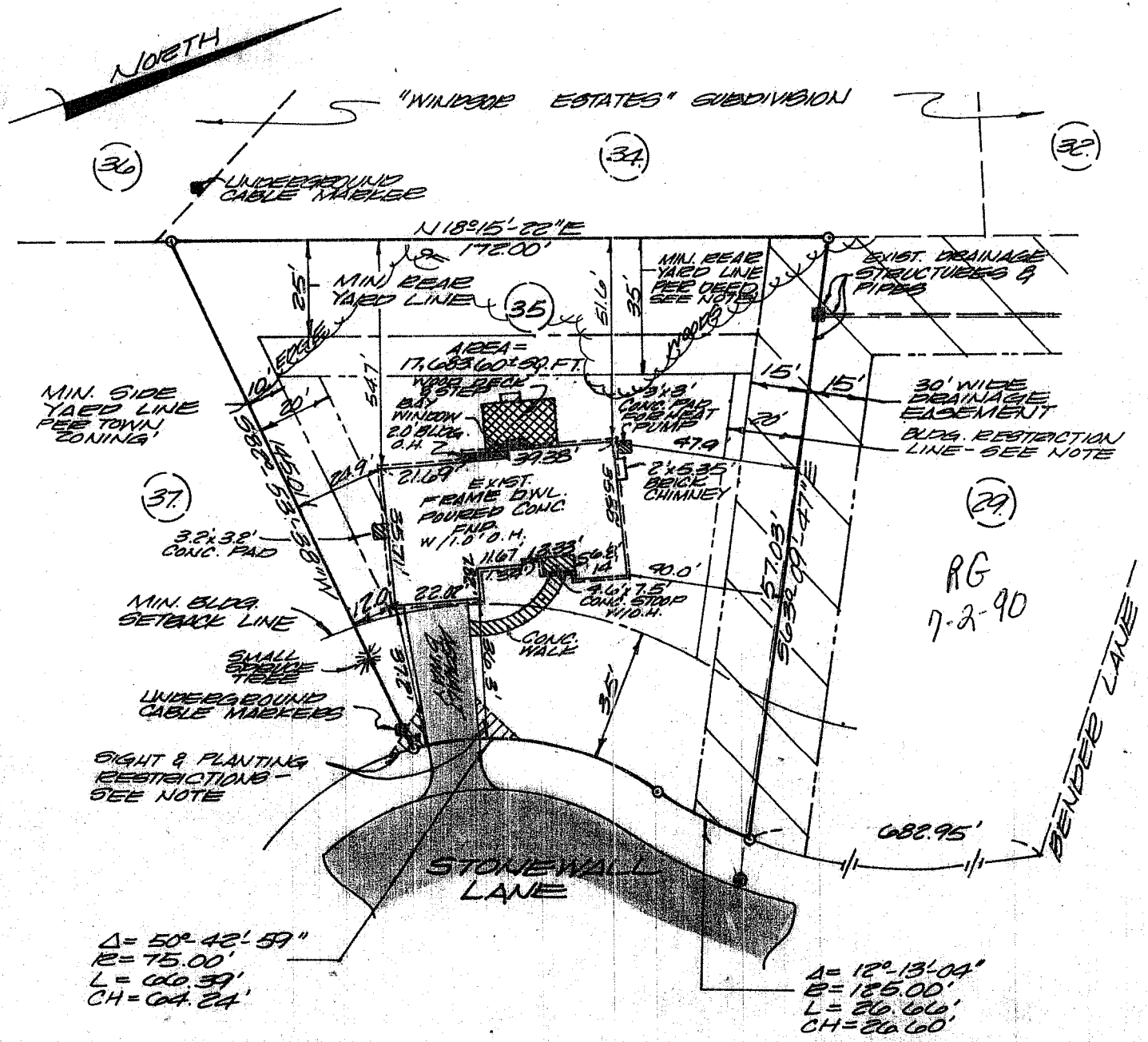


SEE MAP ENTITLED "R.E. ASSOCIATES, THE MEADOWS SUBDIVISION, SECTION 1, TOWN OF BETHLEHEM", DATED JANUARY, 1987, LAST REVISED JANUARY, 1988, FILED IN THE ALBANY COUNTY CLERK'S OFFICE ON FEBRUARY 4, 1988 AS MAP NO. 16755, DT. 10. 172, MADE BY J. KENNETH FRASER & ASSOCIATES, P.C. AND PAUL E. HITE, L.L.C.

CERTIFICATION:
 Survey shown is in accordance with the minimum standards of "CODE OF PRACTICE FOR LAND SURVEYS" as adopted by the New York State Association of Professional Land Surveyors.
CERTIFIED TO:
 Town of Bethlehem.



$\Delta = 50^{\circ} 42' 59''$
 $R = 75.00'$
 $L = 60.59'$
 $CH = 64.24'$

$\Delta = 12^{\circ} 13' 04''$
 $R = 125.00'$
 $L = 20.66'$
 $CH = 20.60'$

RG
 7-2-90

	County:	Albany	MAP OF GUEVEY LOT NUMBER 35 STONEWALL LANE TOWN OF BETHLEHEM PAUL E. HITE Licensed Land Surveyor - Delmar, New York
	State:	New York	
	Scale:	1" = 40'	
	Date:	6.28.90	