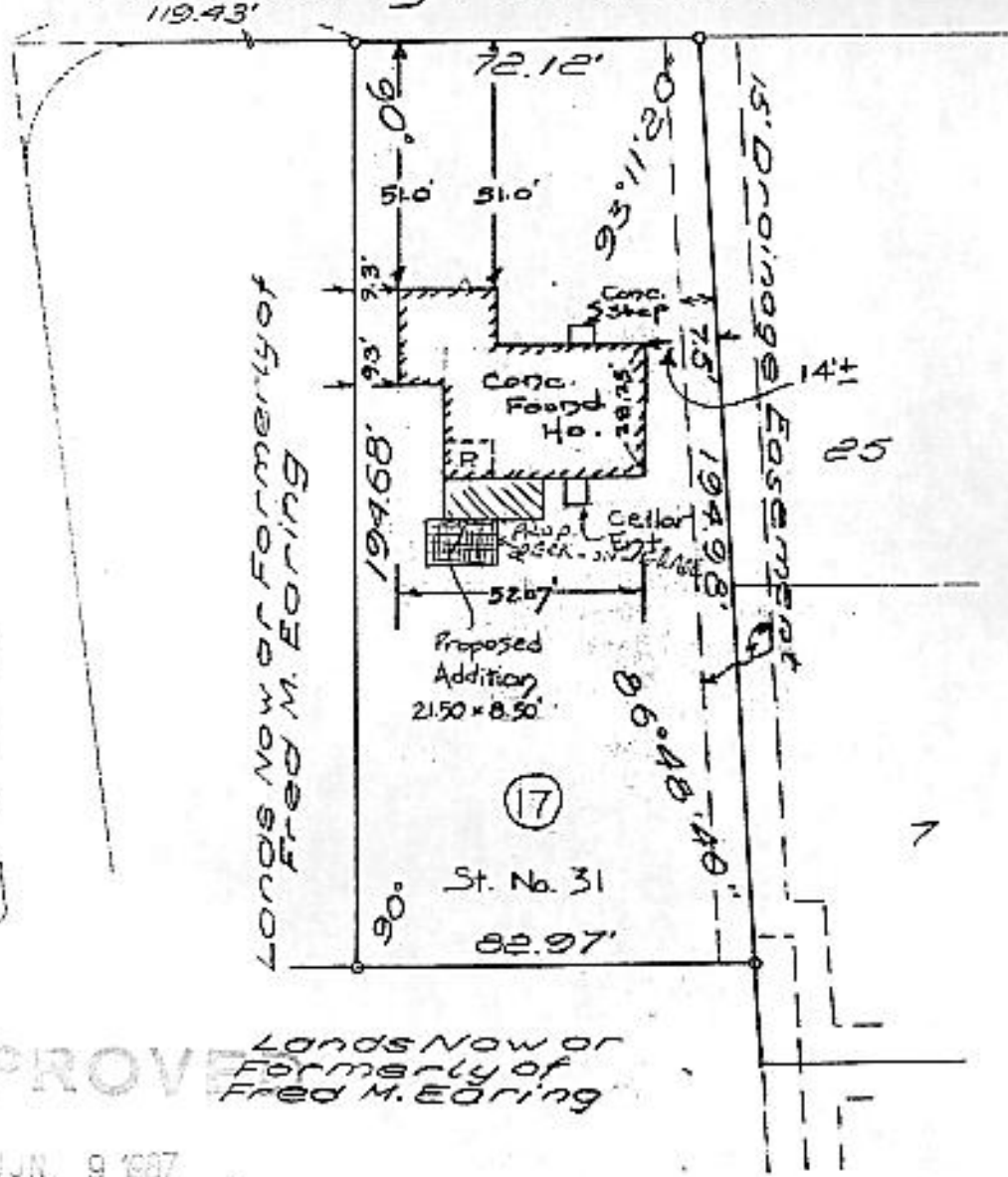


POPLAR DRIVE
Formerly HERBER AVE

RIDGE ROAD



APPROVED Lands Now or Formerly of Fred M. Eoring

JUN 9 1987

Edward W. Boutelle
ENGINEER
TOWN OF BETHLEHEM

MAP OF PROPERTY OF
LEVON BEDROSIAN
ELSMERE

ALBANY COUNTY
SCALE: 1" = 10'

SURVEY AND MAP BY:

NEW YORK
OCTOBER 17, 1957
REVISED JULY 10, 1974
HOUSE CHECKED
REVISED JUNE 1, 1987

EDWARD W. BOUTELLE & SON
CIVIL ENGINEERS AND SURVEYORS
DELMAR, NEW YORK
NEW YORK STATE LICENSE