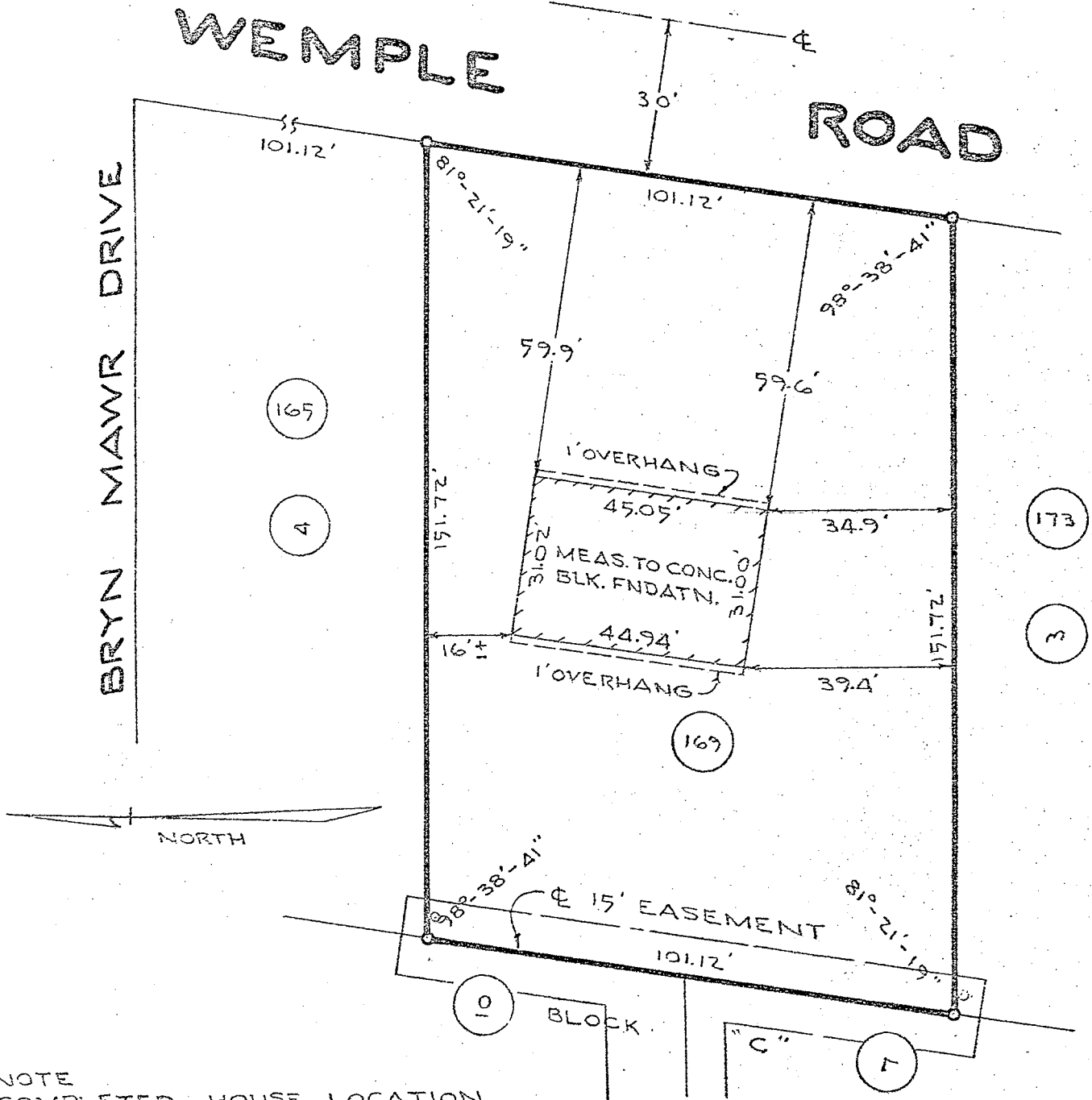


As shown on "MAP OF 'GRA-BIL ESTATES,' SECTION 1, PROPERTY OF WILLIAM H. WALDBILLIG," dated March 24, 1965, and made by Edward W. Boutelle and Son, Civil Engineers, and Surveyors.



NOTE COMPLETED HOUSE LOCATION

COUNTY	MAP OF PROPERTY OF STUYVESANT DEVELOPMENT CORP. TOWN OF BETHLEHEM	SCALE
ALBANY		1" = 30'
STATE	EDWARD W. BOUTELLE AND SON CIVIL ENGINEERS AND SURVEYORS DELMAR, NEW YORK	DATE
NEW YORK		May 24, 1973
ORDER NO.		REVISION
73-156		OCT. 2 1973 HOUSE LOCATED