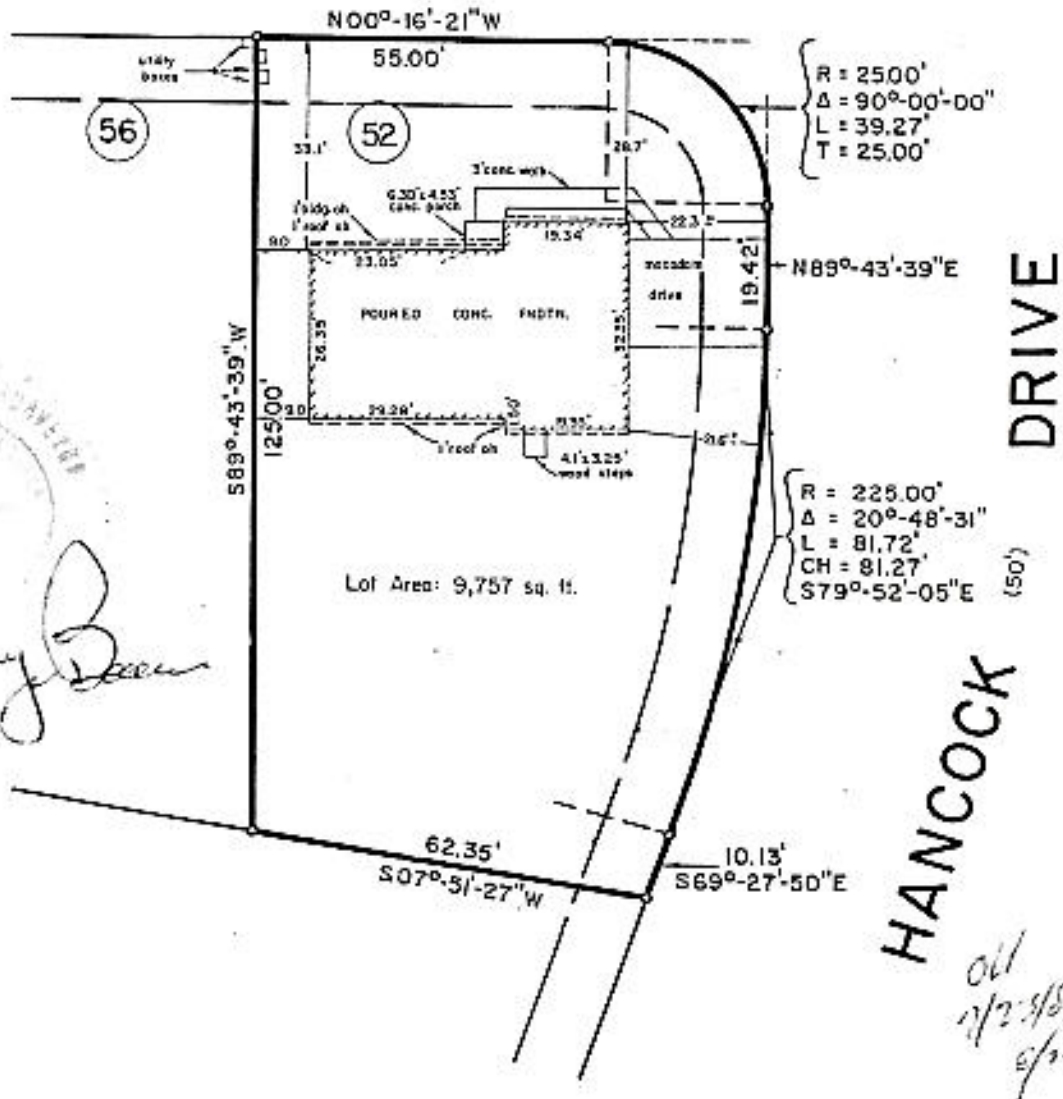


As shown on 'MAP OF 'BICENTENNIAL WOODS' EXTENSION NO. 1, SECTION NO. 5, PROPERTY OF ABCO BUILDERS, INC.,' dated October 31, 1979 and made by Edward W. Boutelle and Son, Civil Engineers and Surveyors.

JEFFERSON (50') ROAD



EDWARD W. BOUTELLE AND SON
 CIVIL ENGINEERS AND SURVEYORS
 DELMAR, NEW YORK

Edward W. Boutelle

COUNTY ALBANY	MAP OF PROPERTY OF ABCO BUILDERS, INC. TOWN OF BETHLEHEM	SCALE 1" = 30'
STATE NEW YORK		DATE JULY 22, 1986
ORDER NO.	EDWARD W. BOUTELLE AND SON CIVIL ENGINEERS AND SURVEYORS DELMAR, NEW YORK	REVISION