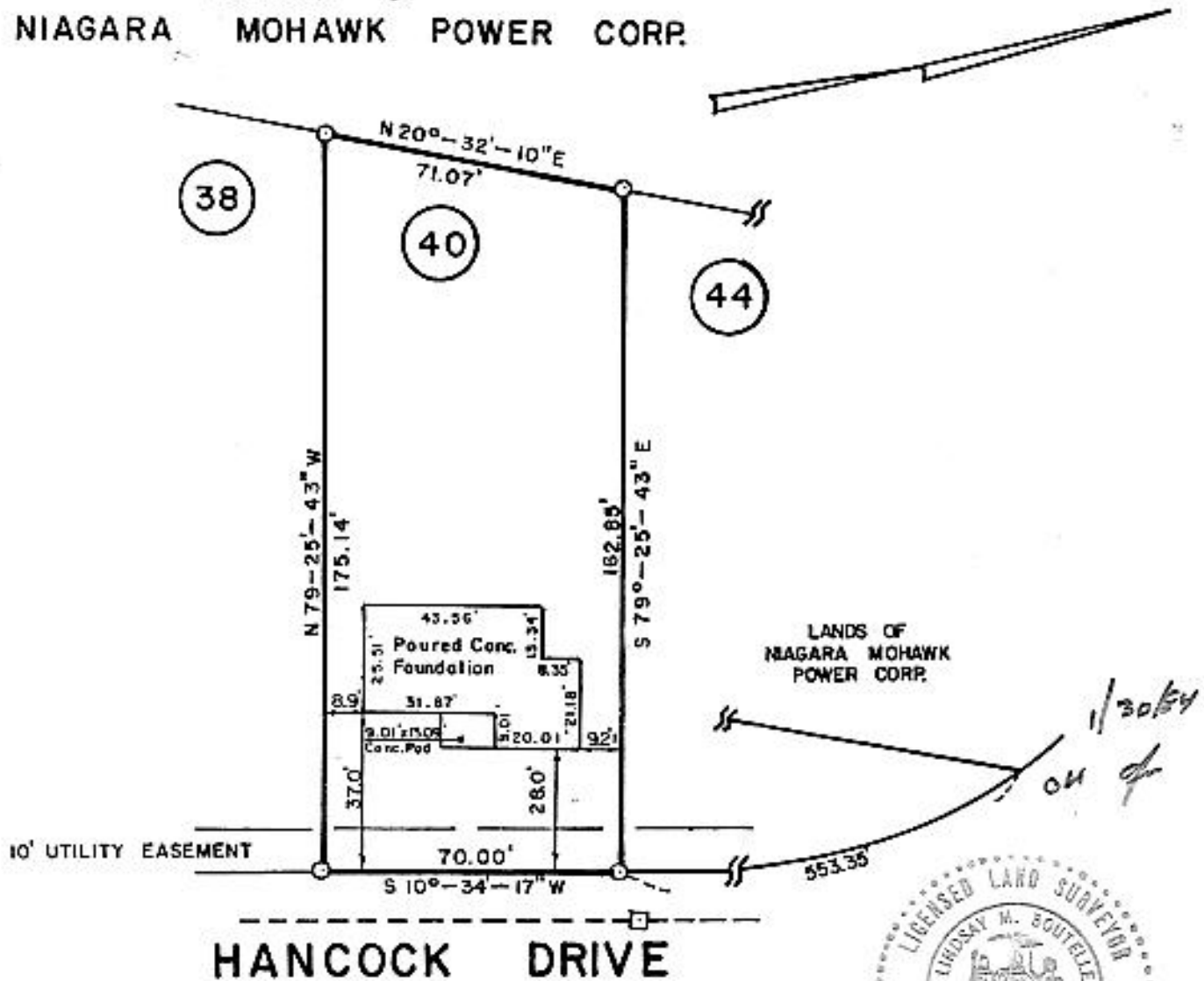


As shown on "MAP OF 'BICENTENNIAL WOODS' EXTENSION NO. 1, SECTION NO. 3, PROPERTY OF ABCO BUILDERS, INC." dated January 27, 1978, revised September 19, 1978 and made by Edward W. Boutelle and Son, Civil Engineers and Surveyors.

LANDS OF
NIAGARA MOHAWK POWER CORP.



HANCOCK DRIVE



COUNTY ALBANY	MAP OF PROPERTY OF ABCO BUILDERS, INC. TOWN OF BETHLEHEM	SCALE 1" = 40'
STATE NEW YORK		DATE OCTOBER 5, 1984
ORDER NO.	EDWARD W. BOUTELLE AND SON CIVIL ENGINEERS AND SURVEYORS DELMAR, NEW YORK	REVISION Fndtn Located 11/20/84