

**MAP REFERENCE:**

"The Meadows At Bethlehem, A New York Partnership & York Land Development Corporation, 'The Meadows Subdivision, Section 2,'" dated September, 1989 revised to May 5, 1993, by Paul E. Hite, L.S. and J. Kenneth Fraser and Associates, P.C., as filed in the Albany County Clerk's Office on May 24, 1993, in drawer 172, as map no. 9770.

**CERTIFICATION:**

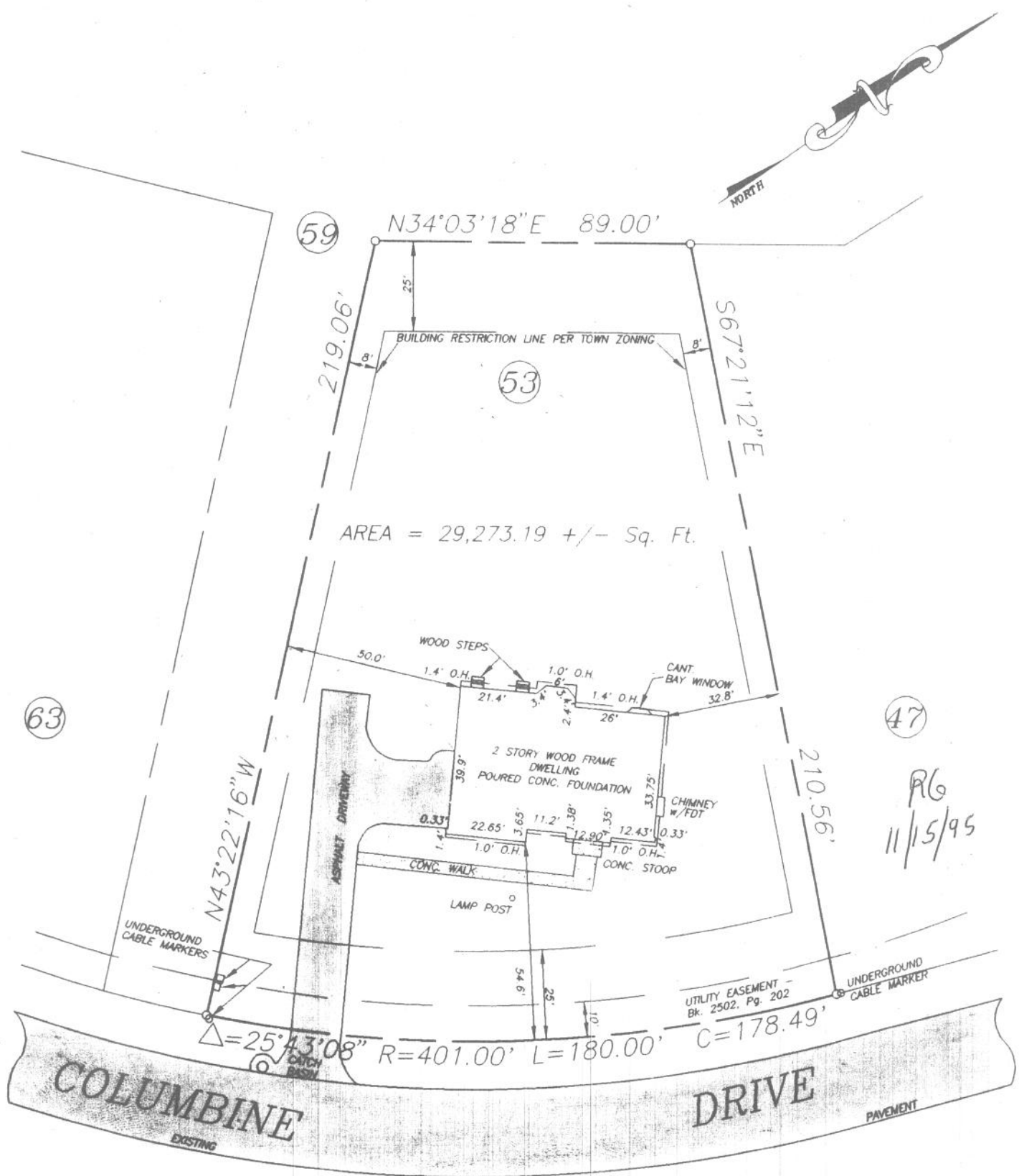
Survey shown is in accordance with the minimum standards of "Code of Practice For Land Surveys" as adopted by the New York State Association of Professional Land Surveyors.


**CERTIFIED TO:**

1. Albanc, FSB and its successors and/or assigns,
2. Old Republic National Title Insurance Company (Title No. SA-95-1422),
3. Jack Bastow and Roberta S. Bastow.

**NOTES:**

1. Surveyed parcel is subject to Declaration of Covenants & Restrictions contained in Book 2484 of deeds, at Page 949.
2. Surveyed parcel is subject to Restrictions as set forth on above referenced filed map.



	County: <b>ALBANY</b>	<b>MAP OF</b>  <b>LOT No. 53</b> <b>COLUMBINE DRIVE</b> <b>TOWN OF BETHLEHEM</b>  <b>PAUL E. HITE</b> Licensed Land Surveyor - Delmar, New York
	State: <b>NEW YORK</b>	
	Scale: <b>1" = 40'</b>	
	Date: <b>NOV. 13, 1995</b>	