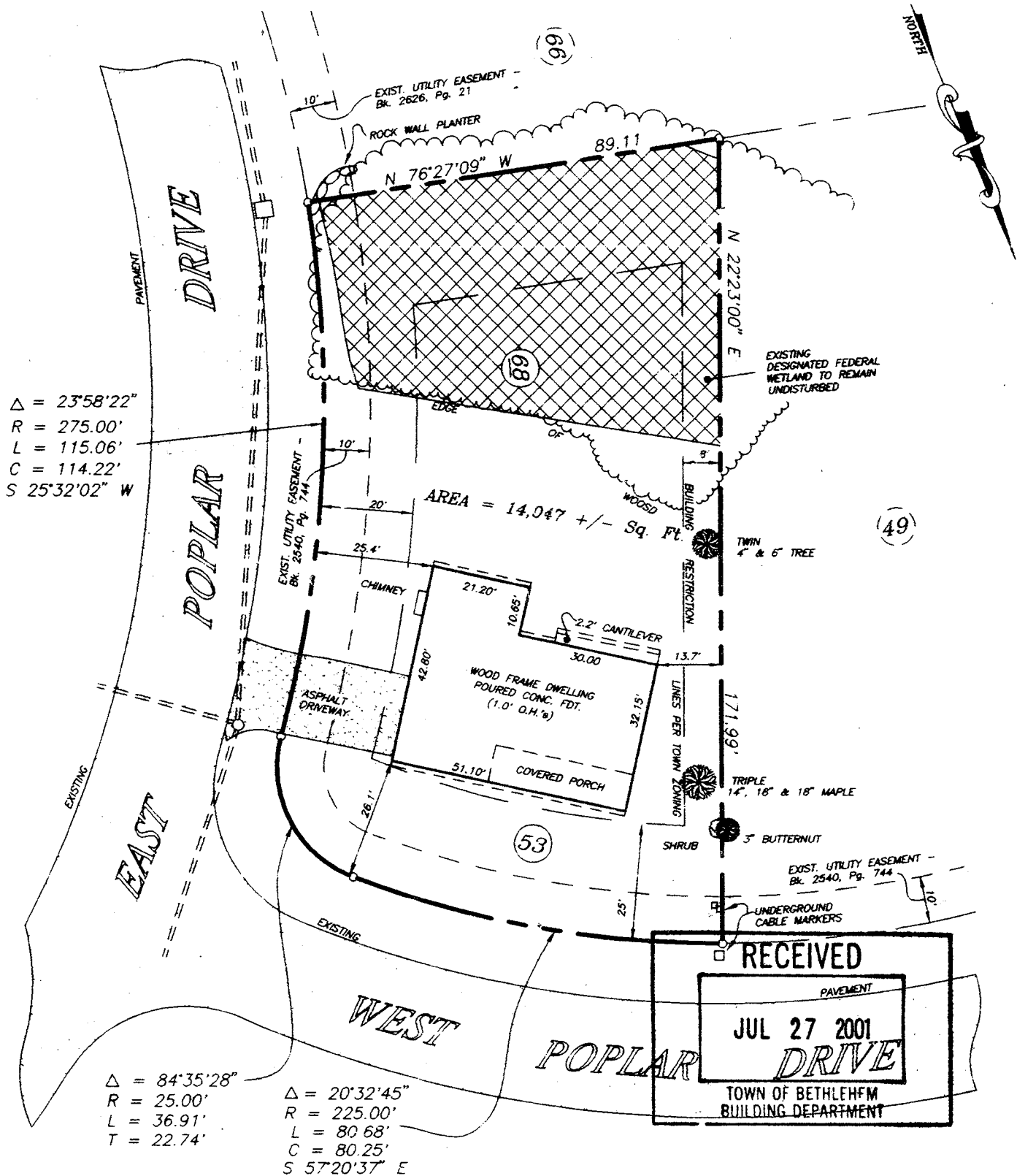


4. See Cutting and Trimming Rights granted to utility company, Bk. 1254, Pg. 190.
5. See Utility Easement Bk. 1515, Pg. 301.
6. Easement "G" (Bk. 2522, Pg. 596) along southerly line recinded by Town per Bk. 2630, Pg. 64.

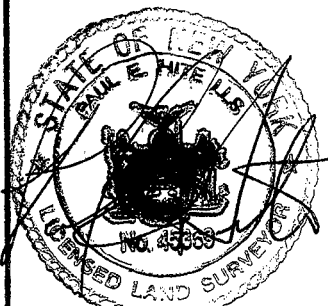


$\Delta = 23^{\circ}58'22''$
 $R = 275.00'$
 $L = 115.06'$
 $C = 114.22'$
 $S 25^{\circ}32'02'' W$

$\Delta = 84^{\circ}35'28''$
 $R = 25.00'$
 $L = 36.91'$
 $T = 22.74'$

$\Delta = 20^{\circ}32'45''$
 $R = 225.00'$
 $L = 80.68'$
 $C = 80.25'$
 $S 57^{\circ}20'37'' E$

RECEIVED
 PAVEMENT
 JUL 27 2001
 DRIVE
 TOWN OF BETHLEHEM
 BUILDING DEPARTMENT



County:
ALBANY
 State:
NEW YORK
 Scale:
1" = 30'
 Date:
JULY 25 2001

MAP OF
LOT No. 68 EAST POPLAR DRIVE
a.k.a. LOT No. 53 WEST POPLAR DRIVE
"COLONIAL WOODLANDS"
SECTION No. 1
TOWN OF BETHLEHEM
PAUL E. HITE
 Licensed Land Surveyor - Delmar, New York