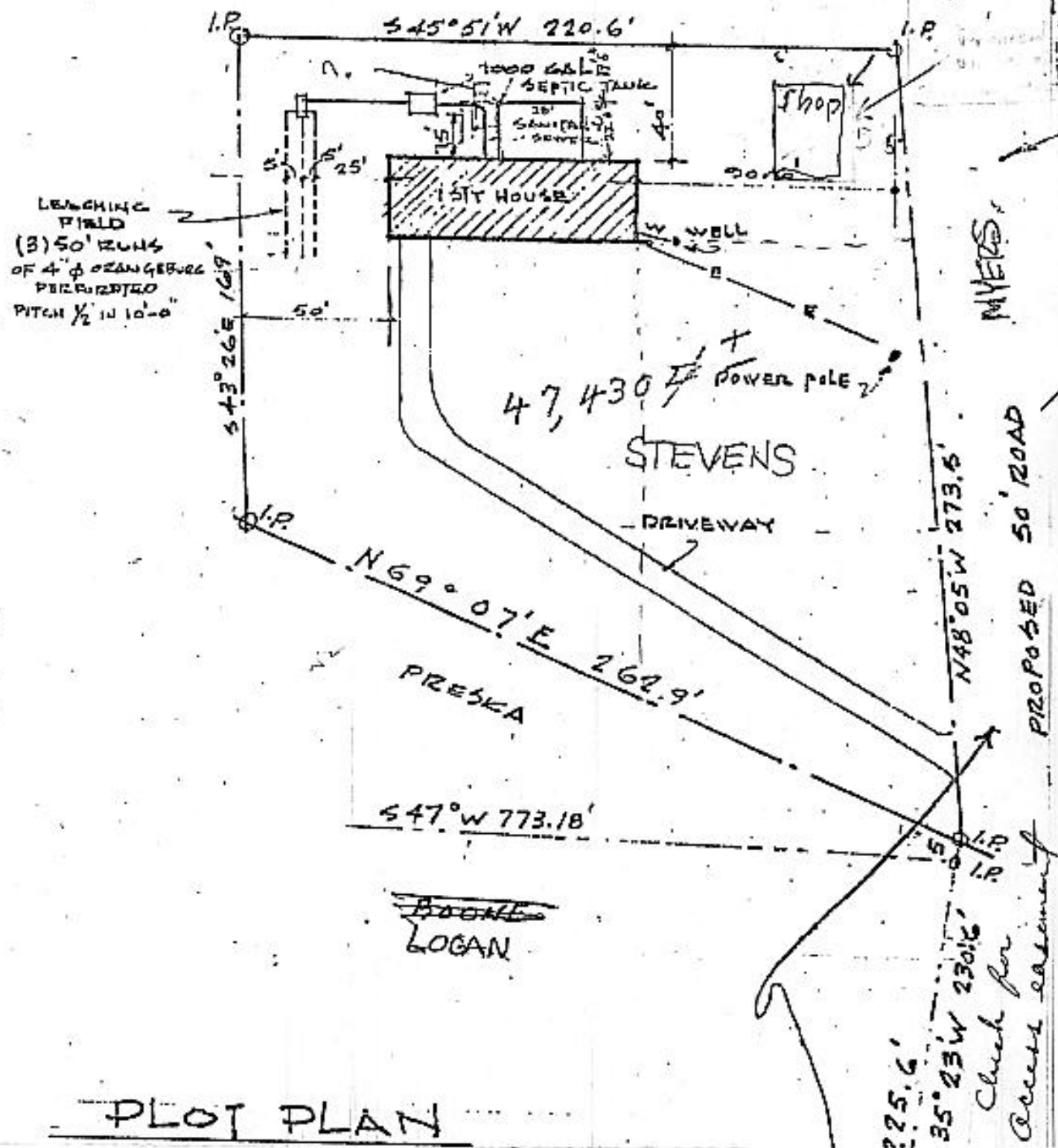
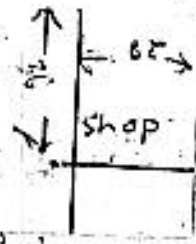


Cont. plan to further subdivide, map will include further Civil Engineering notes

4/26/85

PROPOSED ADDITION 28' x 22' 6"
 RESULTING IN A 17' 6" SETBACK
 FROM BACK PROPERTY LINE,
 RUS PATD/DECK 12' x 22' 6" ON
 SOUTH SIDE OF PROPOSED ADDITION
 (DRAWN TO SCALE)

Atchilles, Planning
 Board Inc.



PLOT PLAN