

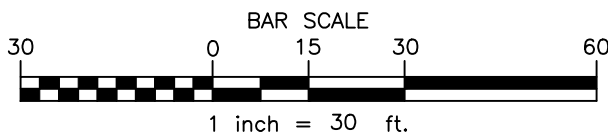
MAP REFERENCES:

1. "Final Plan Amended Carriage Hill Subdivision Map of Lands of Charlew Construction Corp." Town of Bethlehem Albany County, NY prepared by Edward W. Boutelle and Son dated November 14, 1995 last revised March 2006 and filed in the Albany County Clerk's Office on November 1, 2006 in Drawer 172 as Map No. 11898.

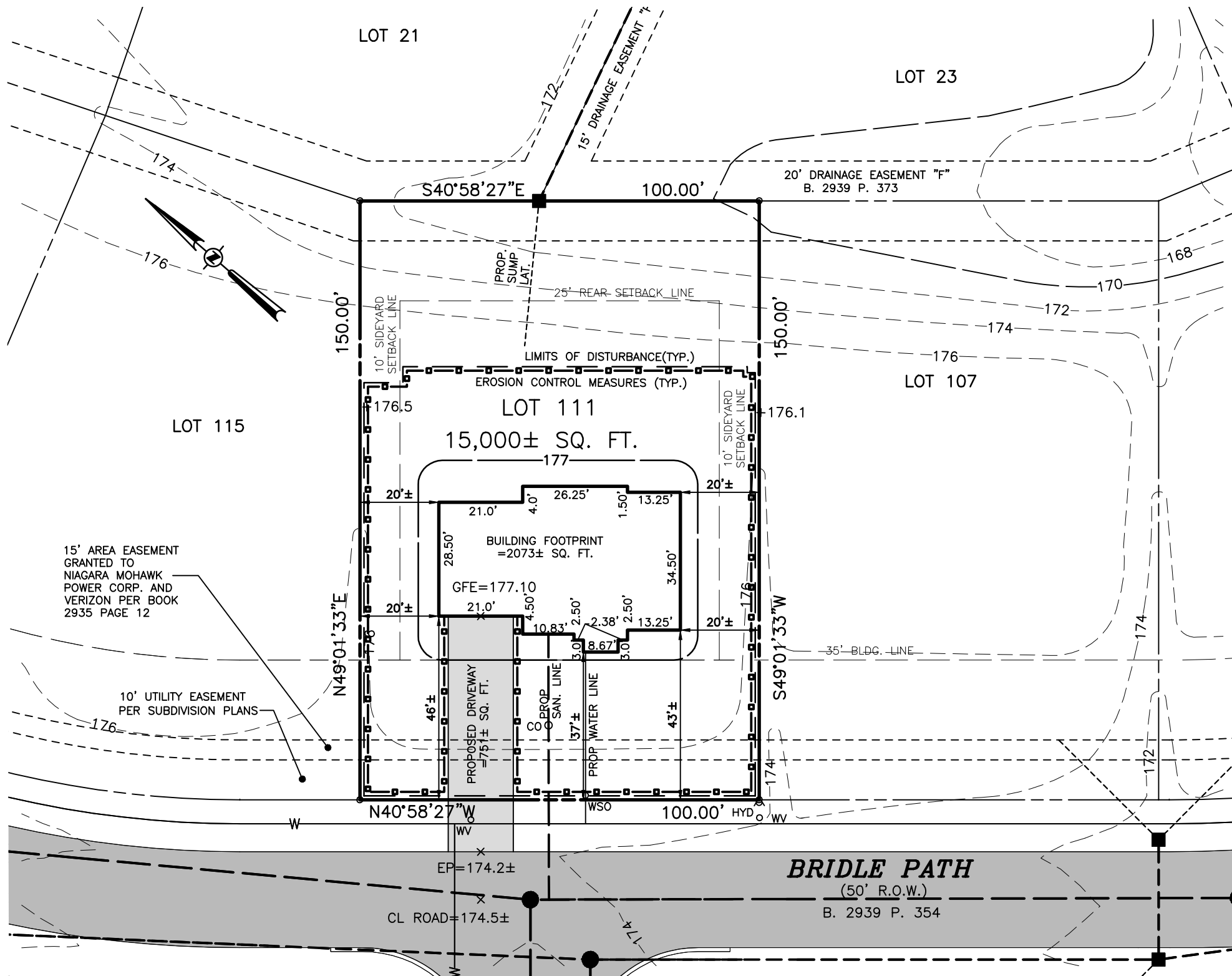
Town Standard Notes

1. Construction fence must be installed along wetland boundaries and buffers within 25 ft of any activity.
2. All disturbed soils must be stabilized with a minimum cover of mulch within 14 days of last activity.
3. All E&SC measures must be inspected and maintained in compliance with "128-49" of the Town Code.
4. All cut and fill slopes within the area of disturbance must have a maximum slope of 3:1 (H:V) or 33%.
5. All driveways and walkways constructed on the property must not exceed a maximum slope of 10%.
6. Final grading must ensure positive drainage away from the structure with a minimum of slope of 1%.
7. Typically, Garage Finished Floor (GFF) is to be 18" above the existing roadway centerline elevation.
8. Notify the Engineering Division of any deviations in building location or grading from approved plans.

SEE CARRIAGE HILL SUBDIVISION SWPP PLANS SHEETS 6 AND 7 OF 31 AND SHEET 27 OF 31 FOR EROSION CONTROL MEASURES.



"ONLY COPIES OF THIS MAP SIGNED IN RED INK AND EMBOSSED WITH THE SEAL OF AN OFFICER OF C.T. MALE ASSOCIATES, P.C. OR A DESIGNATED REPRESENTATIVE SHALL BE CONSIDERED TO BE A VALID TRUE COPY".



PROJECT AND DRAWING FILES ARE FILED IN PROJECT NUMBER 06.6037
CAD DWG. FILE NAME:LOT 111.DWG

CAD DWG. FILE NAME:LOT 111.DWG

WILLIAM J. NETTLETON PLS 49513	DATE	REVISIONS RECORD/DESCRIPTION	DRAFTED	CHECK	APPR.	UNAUTHORIZED ALTERATION OR ADDITION TO THIS DOCUMENT IS A VIOLATION OF SECTION 7209 SUBDIVISION 2 OF THE NEW YORK STATE EDUCATION LAW. © 2008 C.T. MALE ASSOCIATES, P.C. APPROVED: DRAFTED : MDD CHECKED : PROJ. NO: 06.6137 SCALE : 1"=30' DATE : JUNE 3, 2008
	9/23/13	1 PROPOSED BUILDING LOCATION	MDD			
		2				
		3				
		4				
		5				
		6				
		7				
		8				
	9					

LOT 111 BRIDLE PATH

CARRIAGE HILL SUBDIVISION

TOWN OF BETHLEHEM ALBANY COUNTY, NEW YORK

C.T. MALE ASSOCIATES, P.C.

50 CENTURY HILL DRIVE, P.O. BOX 727, LATHAM, NY 12110
518.786.7400 * FAX 518.786.7299

ARCHITECTURE & BUILDING SYSTEMS ENGINEERING * CIVIL ENGINEERING
ENVIRONMENTAL SERVICES * SURVEY & LAND INFORMATION SERVICES

SHEET 1 OF 1

DWG. NO: 06-254