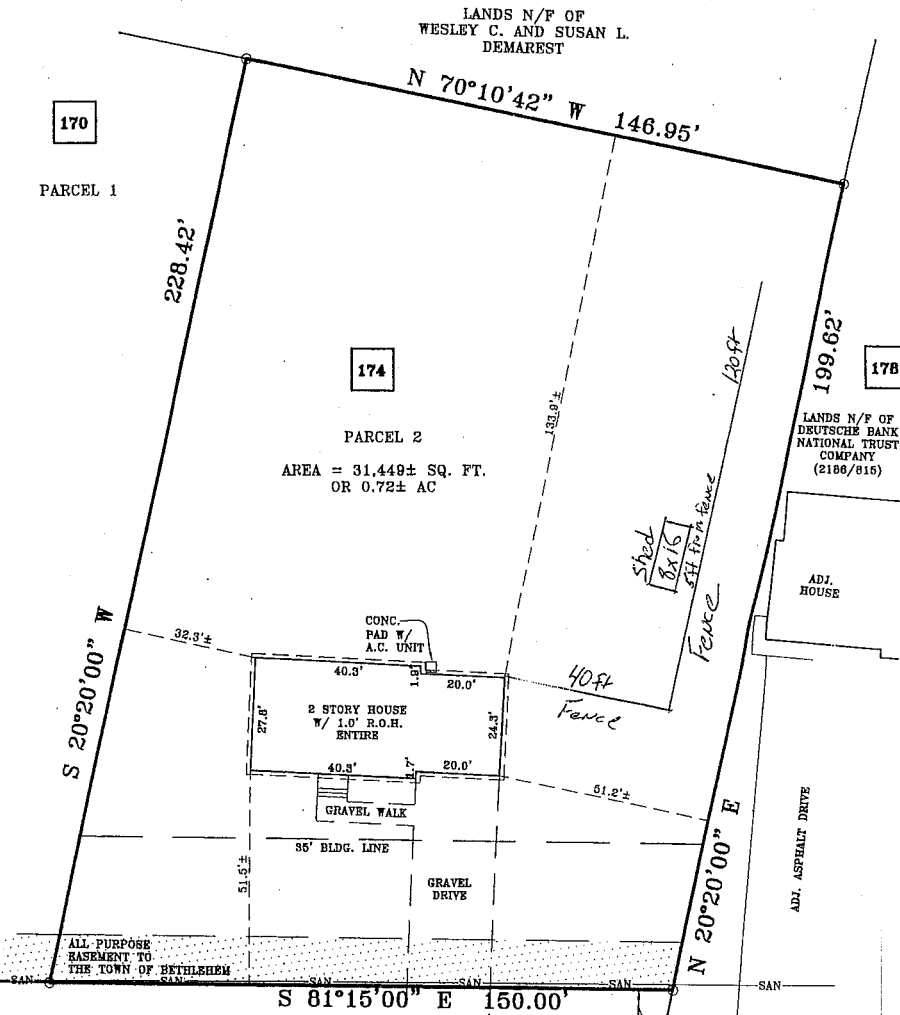


REFERENCE MAP:

1) MAP ENTITLED "LAND DIVISION MAP FOR LANDS OF WESLEY C. AND SUSAN L. DEMAREST" (170 BEAVER DAM ROAD), PREPARED BY S.Y. KIM LAND SURVEYOR ON JANUARY 11, 2008 AND FILED IN THE ALBANY COUNTY CLERK'S OFFICE ON OCTOBER 24, 2008 IN DR 172, MAP NO. 12286.



BEAVER DAM ROAD

LANDS N/F OF THE TOWN OF BETHLEHEM

CERTIFY TO:

- 1) OLD REPUBLIC NATIONAL TITLE INSURANCE COMPANY
- 2) HOMESTEAD FUNDING CORP., ITS SUCCESSORS AND/OR ASSIGNS AS THEIR RESPECTIVE INTERESTS MAY APPEAR
- 3) MALISSA D. PILETTE

<p><b>SURVEY MAP FOR</b>  <b>LANDS OF MALISSA D. PILETTE</b>          (174 BEAVER DAM ROAD)</p>		
TOWN OF BETHLEHEM	ALBANY COUNTY, N.Y.	
SCALE : 1" = 30'	SEPTEMBER 29, 2011	
JOB NO. : 15-186-07	174_BEAVER_DAM_FL.DWG	
<p><b>SYK</b> S.Y. KIM LAND SURVEYOR, P.C.          592 NEW LOUDON ROAD, LATHAM, N.Y. 12110          PHONE : (518) 785-3969 FAX : (518) 785-1608</p>		