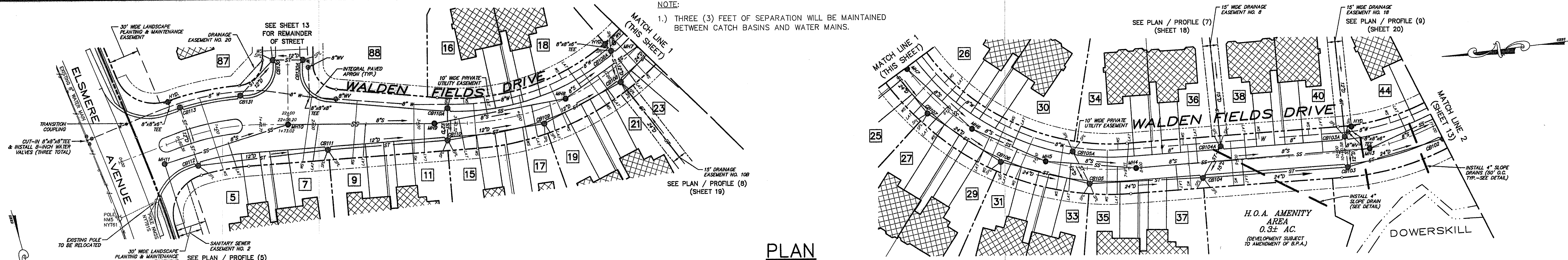
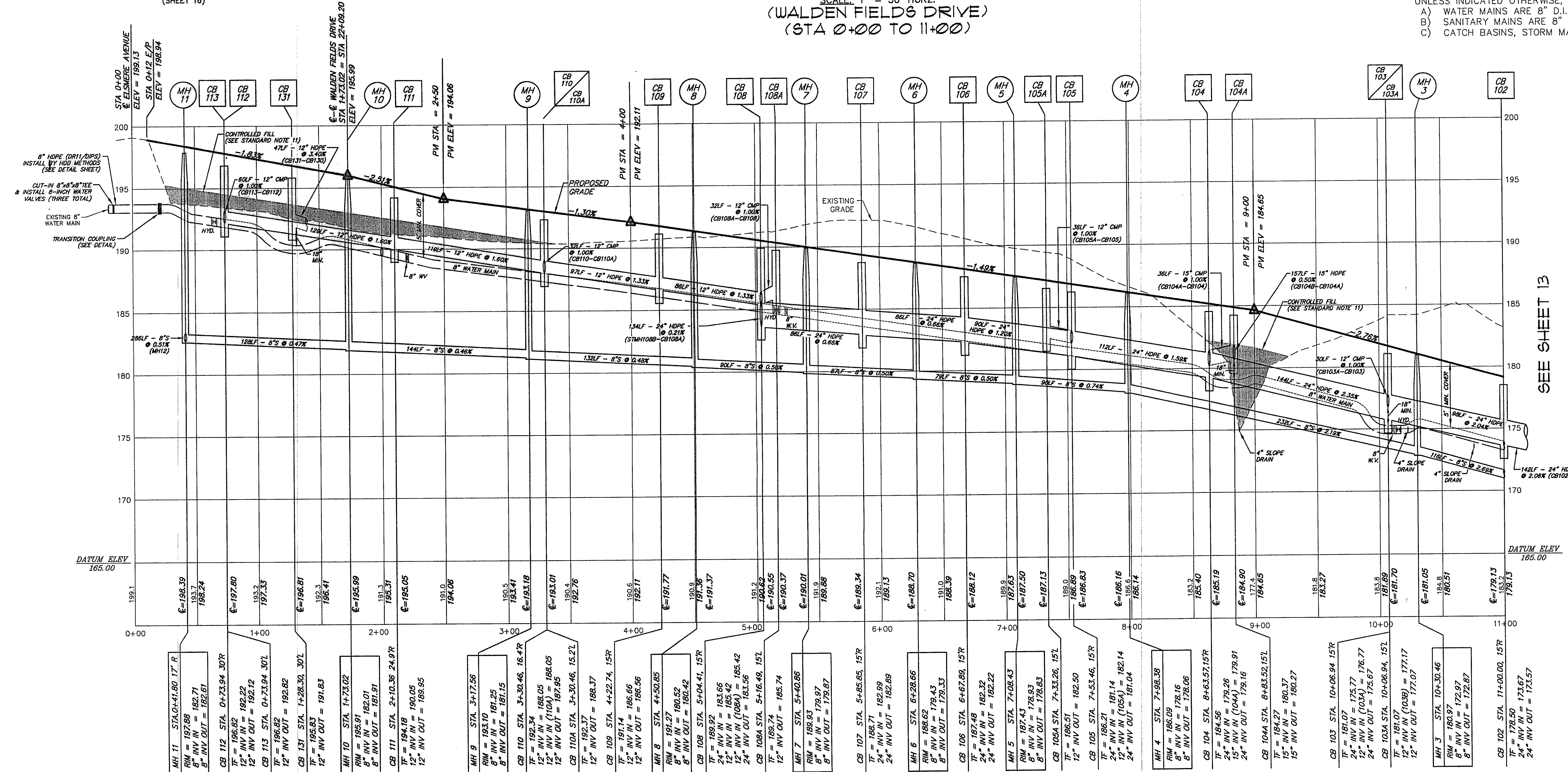


NOTE:
1.) THREE (3) FEET OF SEPARATION WILL BE MAINTAINED BETWEEN CATCH BASINS AND WATER MAINS.

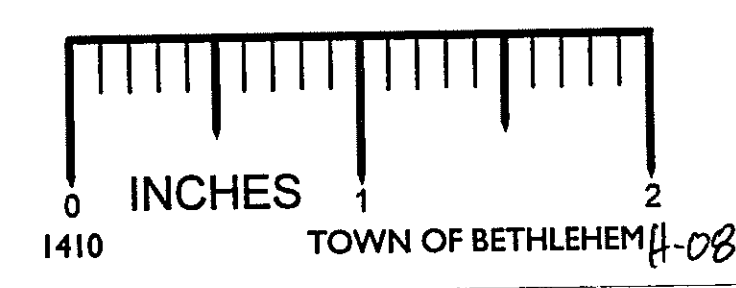


PLAN
SCALE: 1" = 50' HORIZ.
(WALDEN FIELDS DRIVE)
(STA 0+00 TO 11+00)

UNLESS INDICATED OTHERWISE, ALL PROPOSED:
A) WATER MAINS ARE 8" D.I.P., CLASS-52
B) SANITARY MAINS ARE 8" PVC SDR-26 / LATERALS ARE: 6" PVC SDR-26
C) CATCH BASINS, STORM MANHOLES, AND SANITARY MANHOLES ARE 4' I.D.



PROFILE
SCALE: 1" = 50' HORIZ.
1" = 5' VERT.
(WALDEN FIELDS DRIVE)
(STA 0+00 TO 11+00)



ALBANY COUNTY DEPARTMENT OF HEALTH
DIVISION OF ENVIRONMENTAL HEALTH SERVICES
By direction of the Commissioner of Health, these plans are hereby approved. See first sheet for data and signature.

PROFILES.dwg 6-30-03 2:58:14 pm EST

Rev no	Date	Description	By
E	04/25/03	REVISED PER TOWN COMMENTS & A.C.D.O.H. COMMENTS	J.P.P.
D	02/07/03	REVISED PER TOWN COMMENTS	M.R.T.
C	11/11/02	REVISED PER TOWN COMMENTS	M.R.T.
B	9/23/02	REVISED PER TOWN COMMENTS	M.R.T.
A	5/29/02	ISSUED FOR REVIEW	D.E.O.

L.S. L. SIPPERY & ASSOCIATES
ENGINEERS • SURVEYORS • LAND PLANNERS
698 TROY-SCHENECTADY ROAD, LATHAM, N.Y. 12110
PHONE: (518) 782-1800 FAX: (518) 782-1282

It is a violation of the education law of the state of New York, for any person, unless he is acting under the direction of a Licensed Professional Engineer, to alter this document in any way.

STATE OF NEW YORK
SEAL OF THE STATE ENGINEER
NICHOLAS J. SIPPERY
LICENSED PROFESSIONAL ENGINEER
074621

DESIGNED BY: D.E.O.
DRAWN BY: N.C.
CHECKED BY: L.T.S.
APPROVED BY: L.T.S.
SCALE: 1" = 50'
DATE: MAY 3, 2002
ISSUED:

PLAN / PROFILE (1)
WALDEN FIELDS DRIVE STA 0+00 TO 11+00
WALDENMAIER
PLANNED RESIDENTIAL DEVELOPMENT
ELSMERE AVENUE & FEURA BUSH ROAD
TOWN OF BETHLEHEM
COUNTY OF ALBANY
STATE OF NEW YORK

SHEET NUMBER	
12	
12 OF 20	
REV. NO.	DWG. NO.
E	D-02084