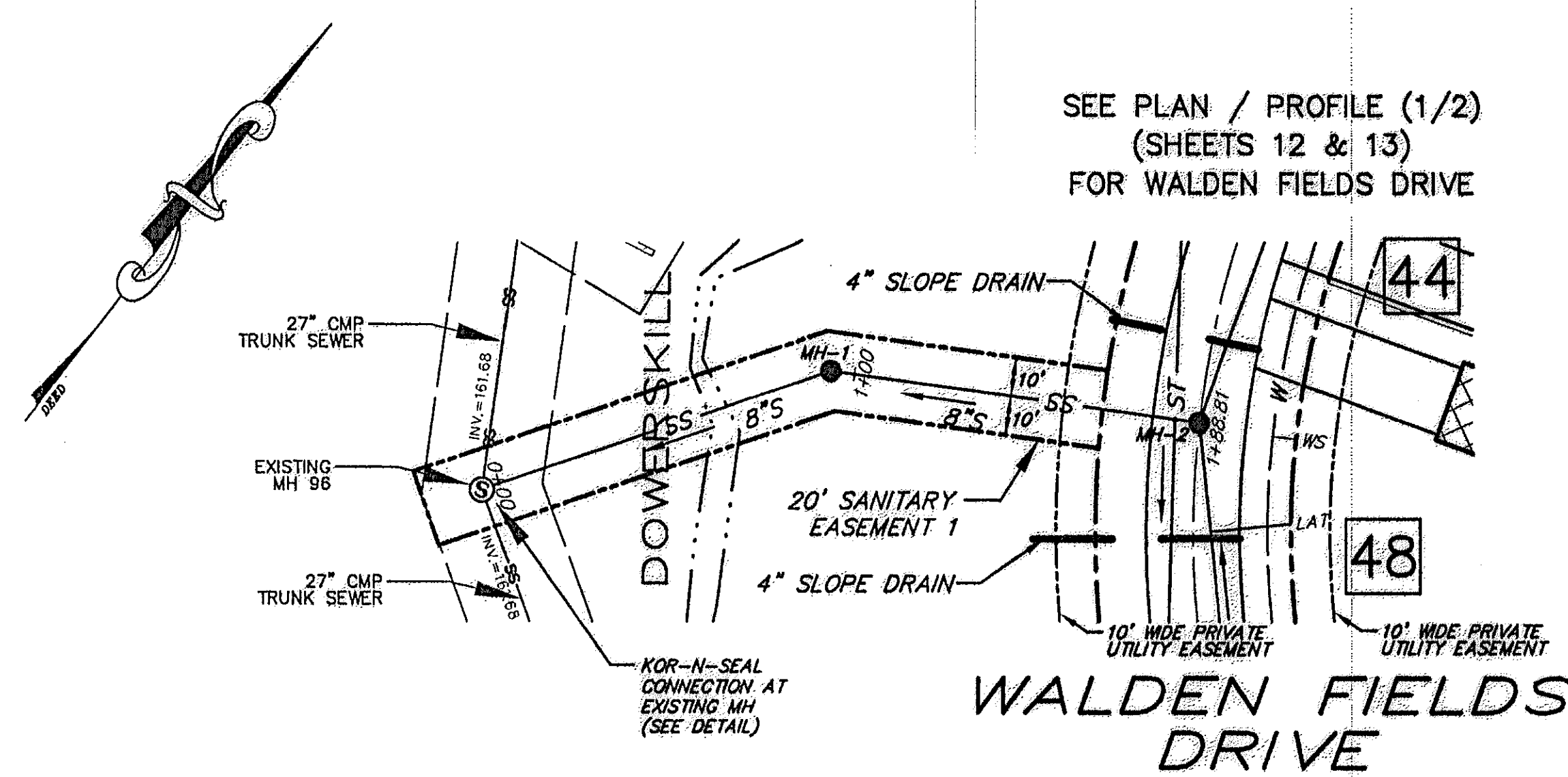


NOTE:

- 1) THREE (3) FEET OF SEPARATION WILL BE MAINTAINED BETWEEN CATCH BASINS AND WATER MAINS.

UNLESS INDICATED OTHERWISE, ALL PROPOSED:

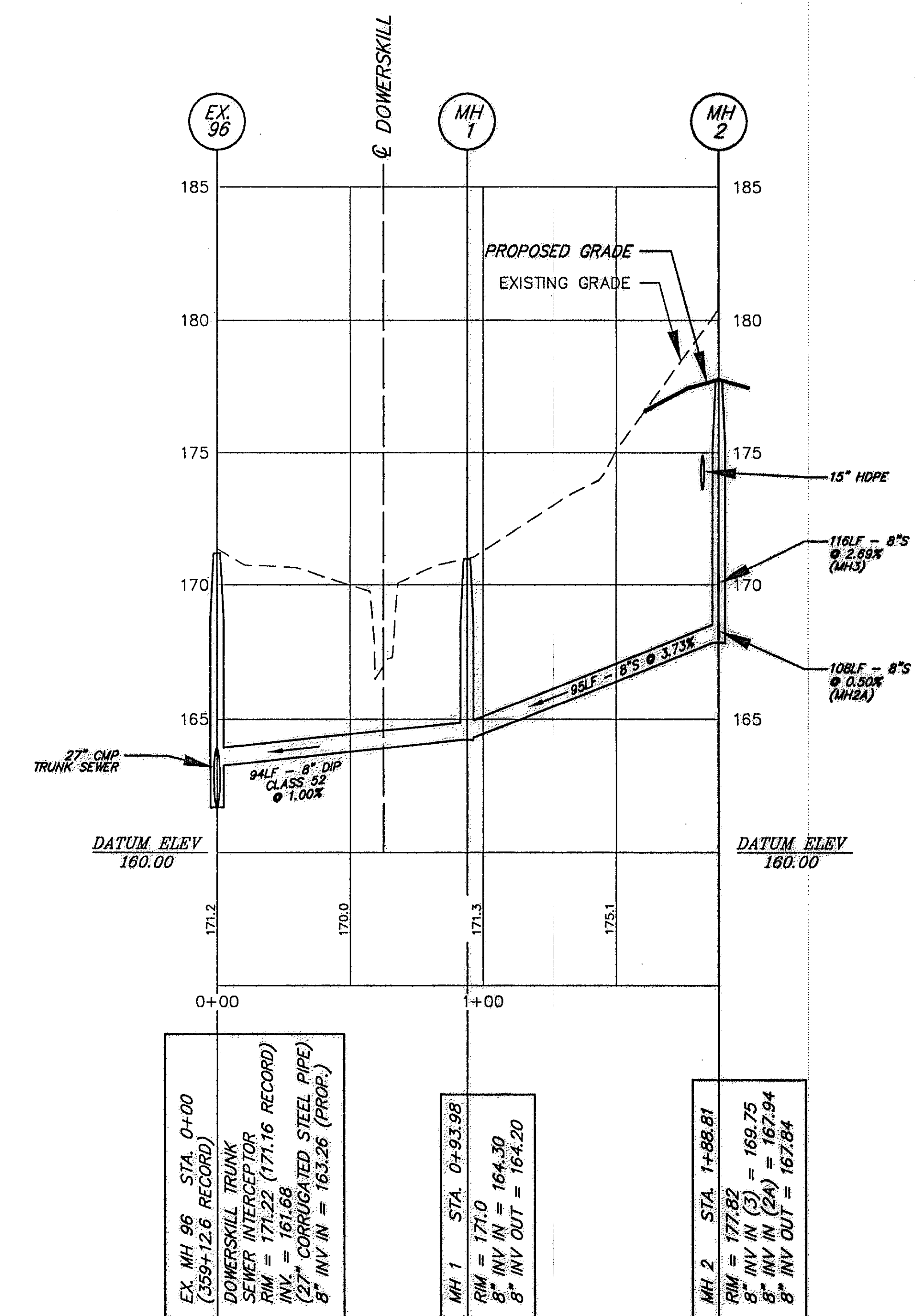
- A) WATER MAINS ARE 8" D.I.P. CLASS-52
- B) SANITARY MAINS ARE 8" PVC SDR-26 / LATERALS ARE: 6" PVC SDR-26
- C) CATCH BASINS, STORM MANHOLES, AND SANITARY MANHOLES ARE 4' I.D.



PLAN

SCALE: 1" = 50' HORZ.

(SANITARY EASEMENT 1 - STA 0+00 TO 1+88.81)



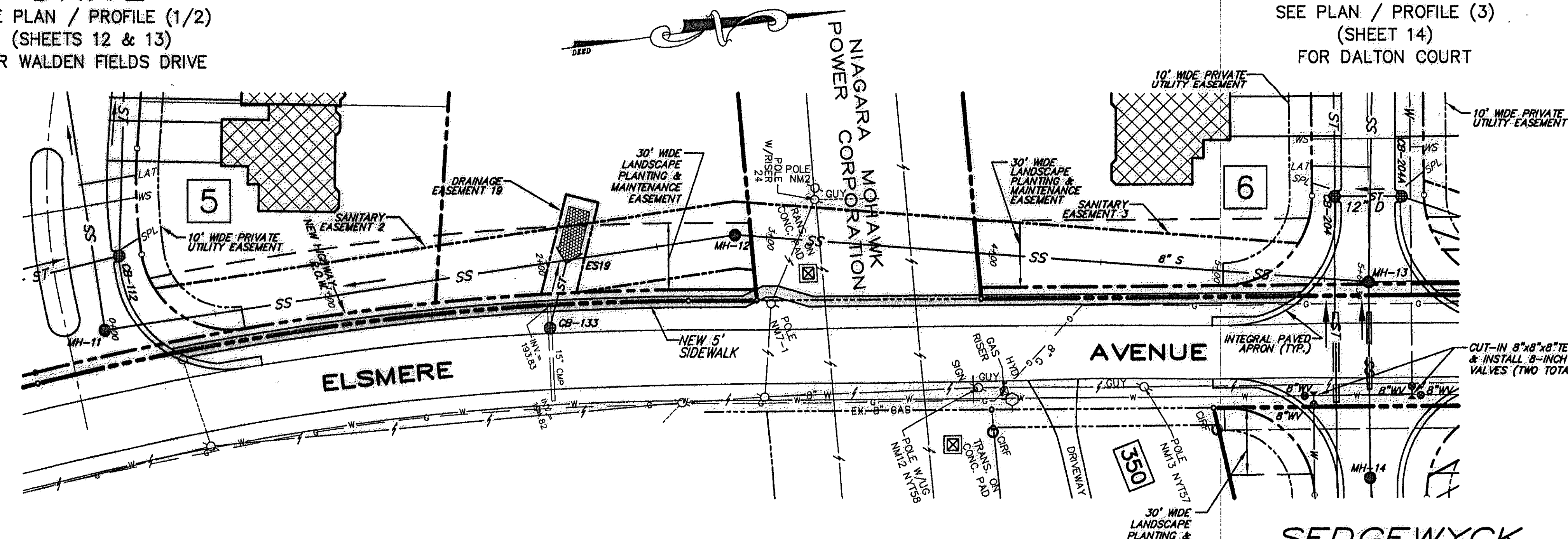
PROFILE

SCALE: 1" = 50' HORZ.

(SANITARY EASEMENT 1 - STA 0+00 TO 1+88.81)

WALDEN FIELDS DRIVE

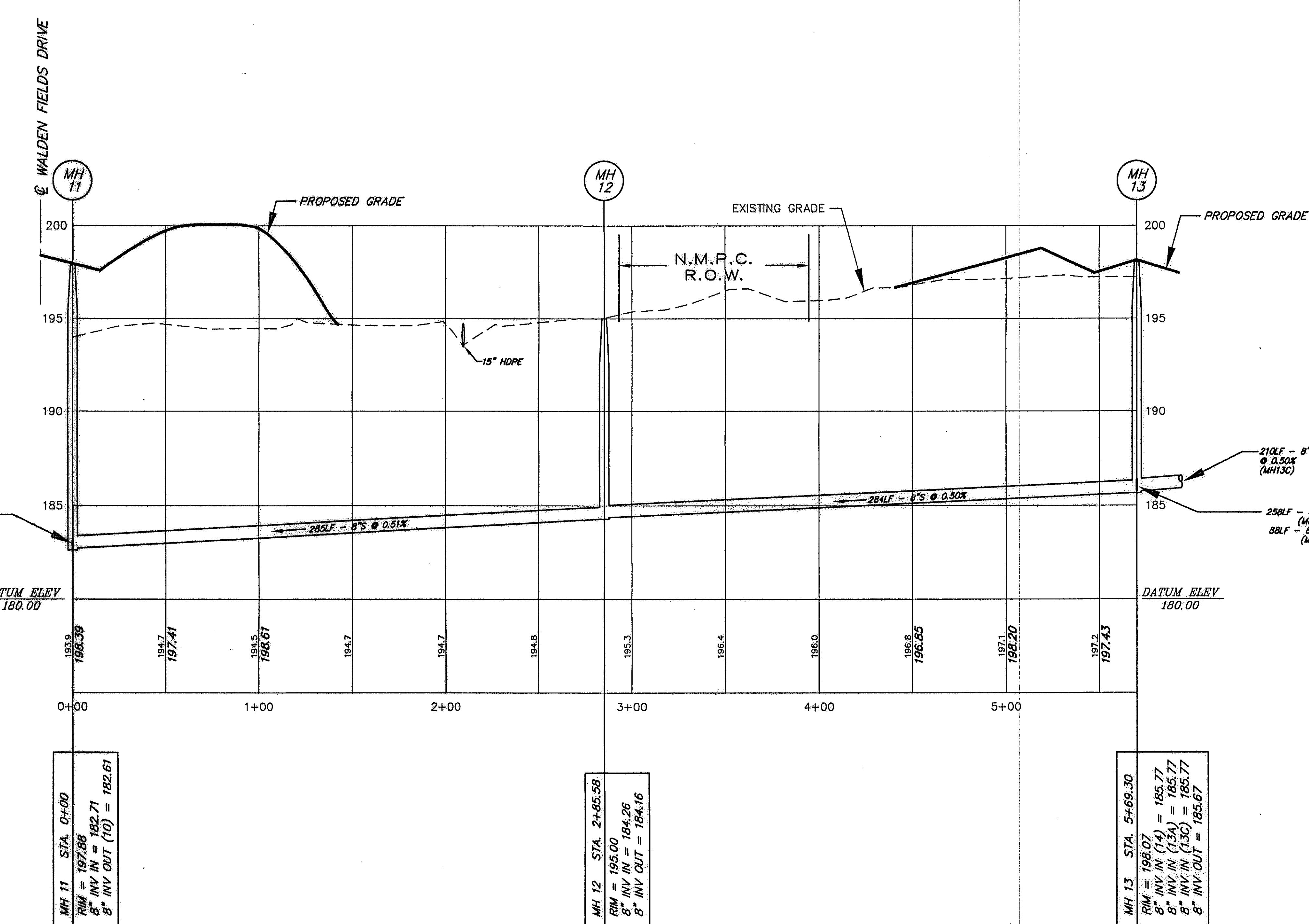
SEE PLAN / PROFILE (1/2) (SHEETS 12 & 13) FOR WALDEN FIELDS DRIVE



PLAN

SCALE: 1" = 50' HORZ.

(SANITARY EASEMENT 2/3) (STA 0+00 TO 5+72.49)



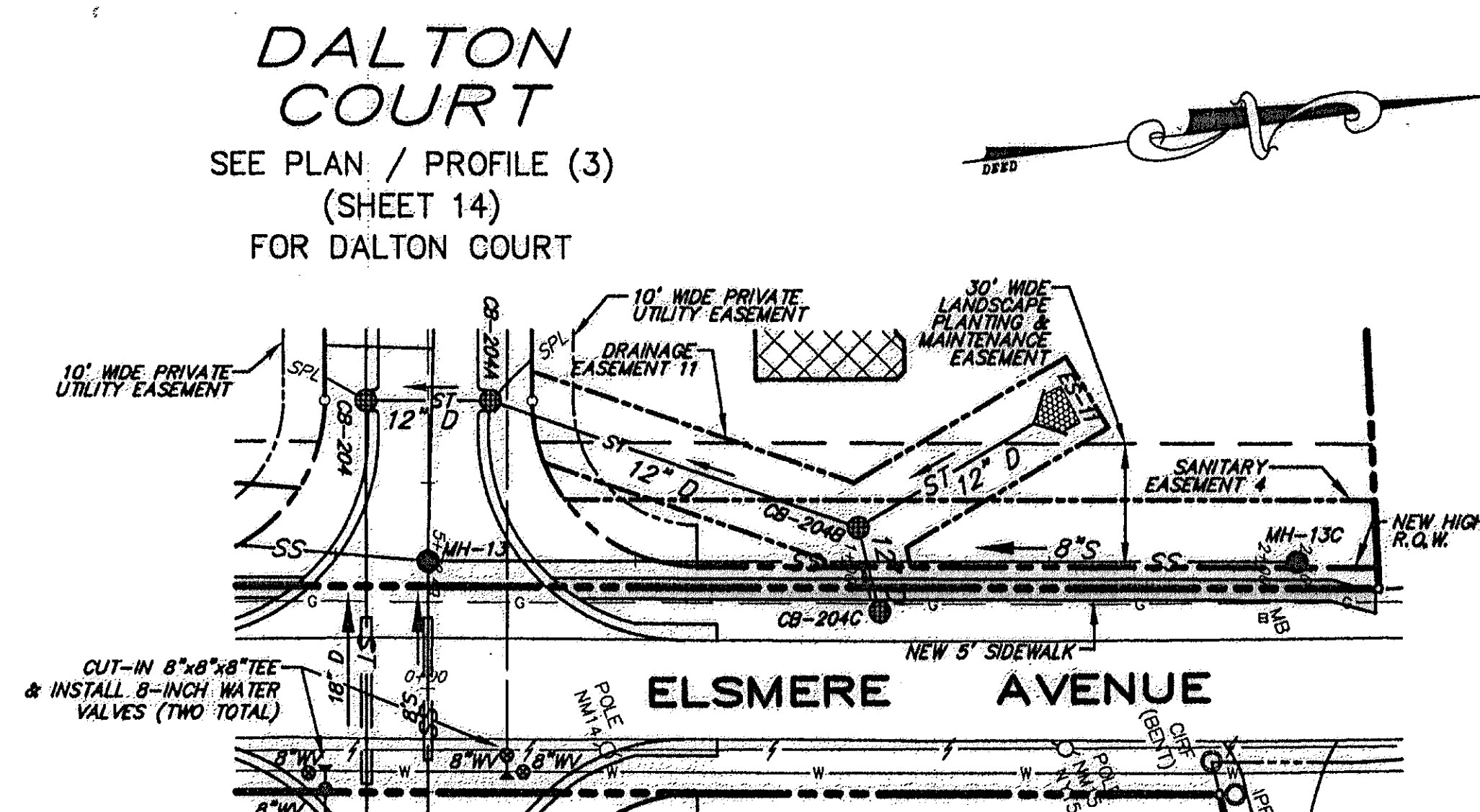
PROFILE

SCALE: 1" = 50' HORZ.

(SANITARY EASEMENT 2/3) (STA 0+00 TO 5+72.49)

DALTON COURT

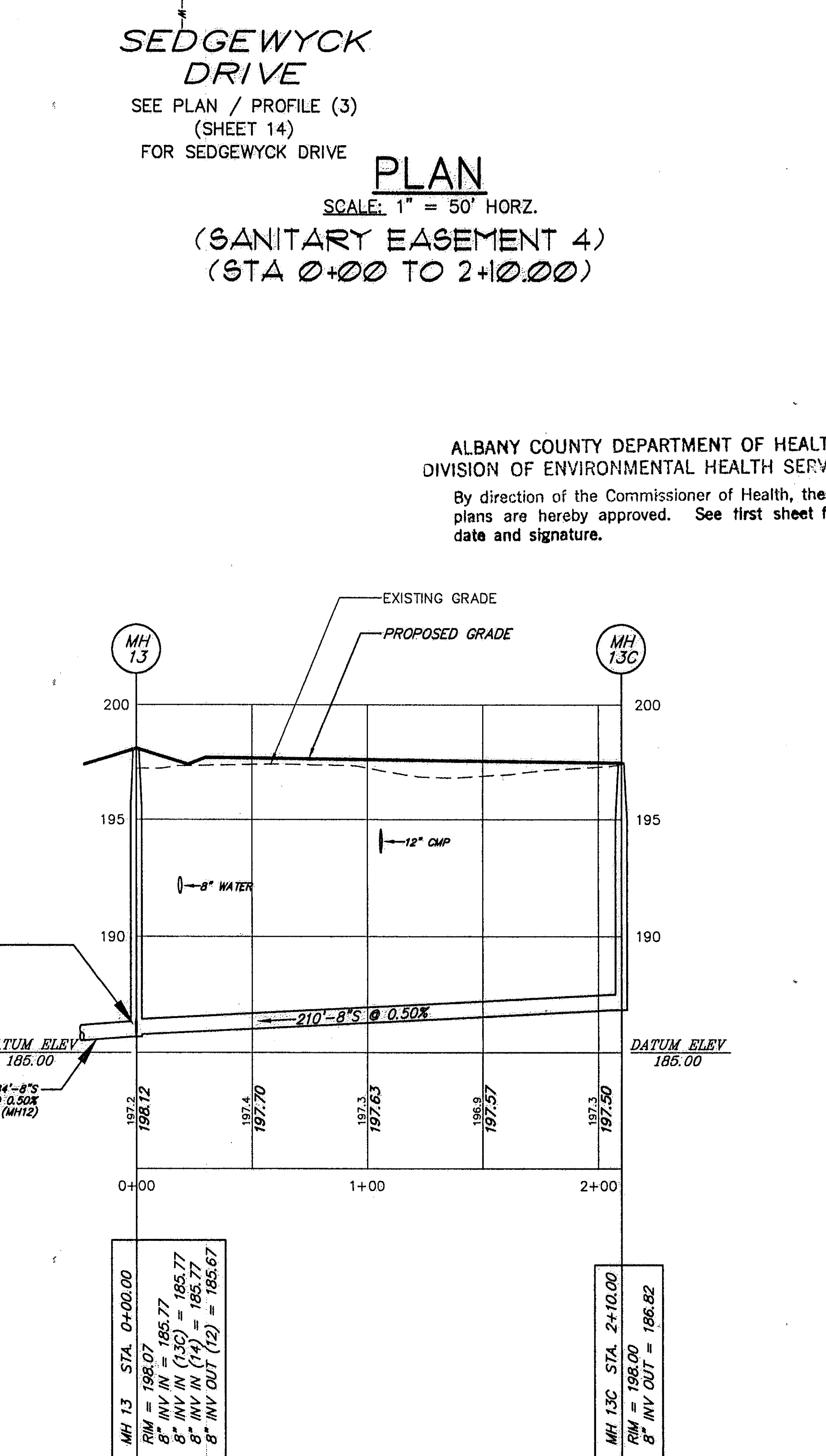
SEE PLAN / PROFILE (3) (SHEET 14) FOR DALTON COURT



PLAN

SCALE: 1" = 50' HORZ.

(SANITARY EASEMENT 4) (STA 0+00 TO 2+10.00)



PROFILE

SCALE: 1" = 50' HORZ.

(SANITARY EASEMENT 4) (STA 0+00 TO 2+10.00)

ALBANY COUNTY DEPARTMENT OF HEALTH
DIVISION OF ENVIRONMENTAL HEALTH SERVICES
By direction of the Commissioner of Health, these plans are hereby approved. See first sheet for date and signature.

Rev. No.	Date	Description	By
E	04/25/03	REVISED PER TOWN COMMENTS & A.C.D.O.H. COMMENTS	J.P.P.
D	02/07/03	REVISED PER TOWN COMMENTS	D.E.O.
C	11/11/02	REVISED PER TOWN COMMENTS	M.R.T.
B	9/23/02	REVISED PER TOWN COMMENTS	D.E.O.
A	5/29/02	ISSUED FOR REVIEW	D.E.O.

L.S. SIPHERLY & ASSOCIATES
ENGINEERS • SURVEYORS • LAND PLANNERS
606 TROY-SCHENECTADY ROAD, LATHAM, N.Y. 12110
PHONE: (516) 782-1800 FAX: (516) 782-1252

It is a violation of the education law of the state of New York, for any person, unless he is acting under the direction of a Licensed Professional Engineer, to alter this document in any way.

06-06-03

DESIGNED BY: D.E.O.
DRAWN BY: N.C.
CHECKED BY: L.T.S.
APPROVED BY: AS NOTED
SCALE: AS NOTED
DATE: MAY 3, 2002
ISSUED:

PLAN / PROFILE (5)
SANITARY EASEMENTS 1 THROUGH 4
WALDENMAIER
PLANNED RESIDENTIAL DEVELOPMENT
ELSMERE AVENUE & FEURA BUSH ROAD
TOWN OF BETHLEHEM
COUNTY OF ALBANY
STATE OF NEW YORK

SHEET NUMBER
16
16 OF 20
REV. NO. DWG. NO.
E D-02158

profile2.dwg 6-9-03 10:47:21 am EST