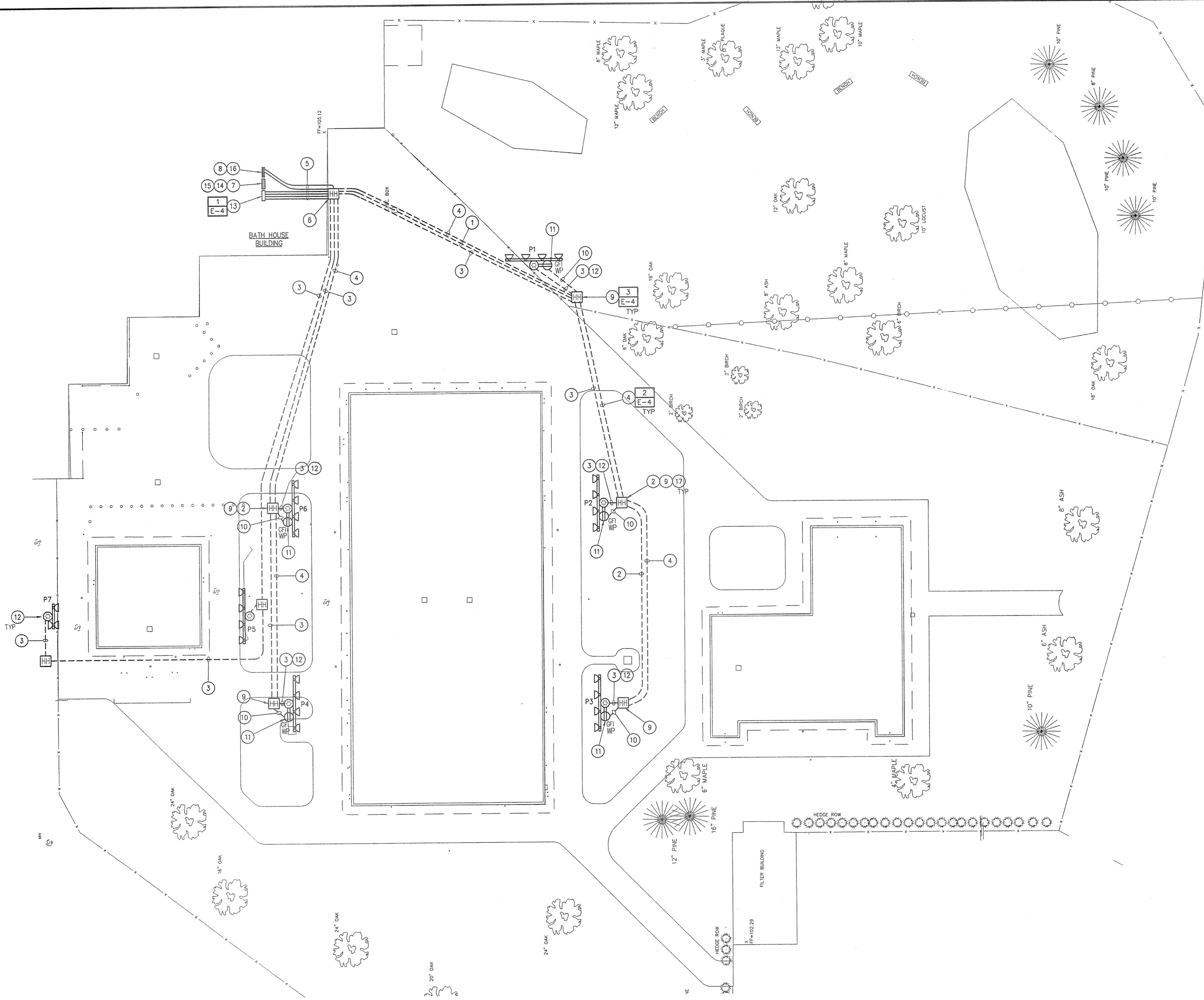


**GENERAL NOTE:**

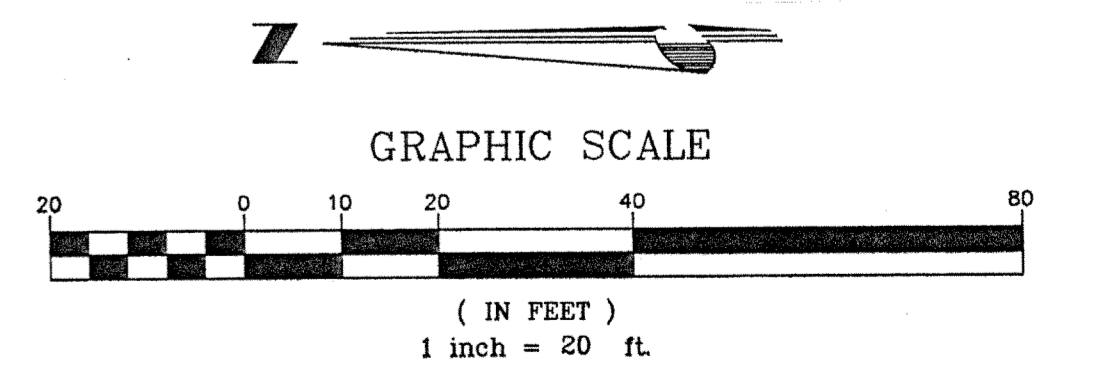
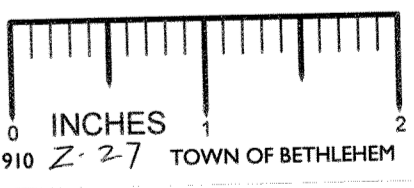
- SEE BASE BID AND ALTERNATE #7 ON DRAWING E-1 FOR ADDITIONAL INFORMATION.

**CODED NOTES**

- PROVIDE 1" C.-3#12, 1#12 G. FOR POWER TO LIGHT FIXTURE.
- SPLICE CONDUCTORS FOR LIGHT FIXTURE INSIDE HANDHOLE. RUBBER TAPE AND COLD SHRINK TUBE OVER COMPRESSION SPLICES.
- PROVIDE 1" C.-3#10, 1#10 G. FOR POWER TO LIGHT FIXTURES.
- PROVIDE 1" C.-2#6, 1#6 G. FOR POWER TO RECEPTACLE CIRCUIT.
- CONDUIT SHALL BE ROUTED EXPOSED ON THE CEILING. PROVIDE JUNCTION BOXES AS REQUIRED AND SIZED PER NEC. COORDINATE EXACT ROUTING IN FIELD.
- CONDUIT SHALL PENETRATE EXISTING CMU WALL AND BE ROUTED EXPOSED ON THE EXTERIOR WALL TO TRANSITION BELOW GRADE. CONDUIT PENETRATIONS THROUGH CMU WALL SHALL BE SEALED AND FIRE RATED TO MATCH EXISTING. COORDINATE EXACT ROUTING IN FIELD.
- EXISTING RECESSED SQUARE D "1-LINE" PANEL "DP-2", 480/277V, 3Ø, 4W, LOCATED IN BATH HOUSE BUILDING. COORDINATE EXACT LOCATION OF PANEL IN FIELD.
- EXISTING RECESSED SQUARE D "NAIB" PANEL "LP-2", 120/208V, 3Ø, 4W, LOCATED IN BATH HOUSE BUILDING. COORDINATE EXACT LOCATION OF PANEL IN FIELD.
- SPLICE INCOMING CONDUCTORS INSIDE HANDHOLE FOR THE RECEPTACLE CIRCUIT. SPLICE CONDUCTORS WITH #10'S TO FACILITATE TERMINATING CONDUCTORS TO RECEPTACLE. RUBBER TAPE AND COLD SHRINK TUBE OVER COMPRESSION SPLICES.
- PROVIDE 1" C.-2#10, 1#10 G. FOR RECEPTACLE. PROVIDE LIQUID-TIGHT FLEXIBLE METAL CONDUIT.
- RECEPTACLE SHALL BE ATTACHED WITH SCREWS TO LIGHT POLE AT 18" AFG.
- CONDUIT FOR LIGHT FIXTURE POWER SHALL ENTER THROUGH THE SIDE OF THE LIGHT POLE. DRILL HOLE IN SIDE OF POLE FOR CONDUIT ENTRY. PROVIDE LIQUID-TIGHT FLEXIBLE METAL CONDUIT ABOVE GRADE. TYPICAL FOR EACH LIGHT FIXTURE.
- LIGHTING CONTROL PANEL.
- PROVIDE (4) 20A/3P CIRCUIT BREAKERS FOR POWER TO LIGHT FIXTURES 'P1', 'P2', 'P3', 'P4', 'P5', 'P6' AND 'P7'. CIRCUIT BREAKER TYPE AND RATING SHALL MATCH EXISTING.
- EXTEND CIRCUITRY FOR EXISTING LOADS TO BE CONTROLLED BY THE LIGHTING CONTROL PANEL. 'SKATING POOL LIGHTS IN CENTER' 20A/3P; 'SKATING AREA LIGHTS BY PATH' 20A/3P; 'ROADWAY LIGHTS' 30A/3P. CIRCUIT BREAKERS FOR THESE LOADS SHALL BE REPLACED WITH NEW, TYPE AND RATING SHALL MATCH EXISTING.
- PROVIDE (2) 20A/1P CIRCUIT BREAKERS FOR POWER TO RECEPTACLE CIRCUITS AND (2) 20A/1P CIRCUIT BREAKERS FOR LIGHTING CONTROL POWER. CIRCUIT BREAKER TYPE AND RATING SHALL MATCH EXISTING.
- PROVIDE LABELS FOR EACH CONDUIT AND PULL STRING AT EACH HANDHOLE IN THE EVENT ALTERNATE #7 IS NOT INCLUDED.



**1 ELECTRICAL SITE PLAN - POWER AND LIGHTING**  
SCALE: 1"=20'-0"



File: J:\12372\Acad\1204\12372-E-2.dwg User: 1910 7/3/2003

Revisions:	Drawn By:	App'd. By:	Date:



Designed By: RJR Date: 7/03  
 Drawn By: KHQ Date: 7/03  
 Checked By: SLN Date: 7/03  
 UNAUTHORIZED ALTERATION OR ADDITION TO THIS DOCUMENT IS A VIOLATION OF SECTION 7209 SUBDIVISION 2 OF THE NEW YORK STATE EDUCATION LAW

**TOWN OF BETHLEHEM**  
 PARKS & RECREATION DEPARTMENT  
 261 ELM AVENUE  
 DELMAR, NEW YORK 12054  
 (518) 439-4131



**CHA CLOUGH HARBOUR & ASSOCIATES LLP**  
 ENGINEERS, SURVEYORS, PLANNERS & LANDSCAPE ARCHITECTS  
 III WINNERS CIRCLE - ALBANY, NEW YORK - 12205  
 P.O. BOX 5269 518-453-4500  
 www.cloughharbour.com  
 CHA Project No. 12372.1000.1103

**ELM AVENUE PARK POOL COMPLEX FACILITY UPGRADE**  
 ELECTRICAL SITE PLAN - POWER AND LIGHTING  
 SCALE: AS SHOWN DATE: JULY 2, 2003

Drawing No. **E-2**  
 SHEET 9 OF 13