

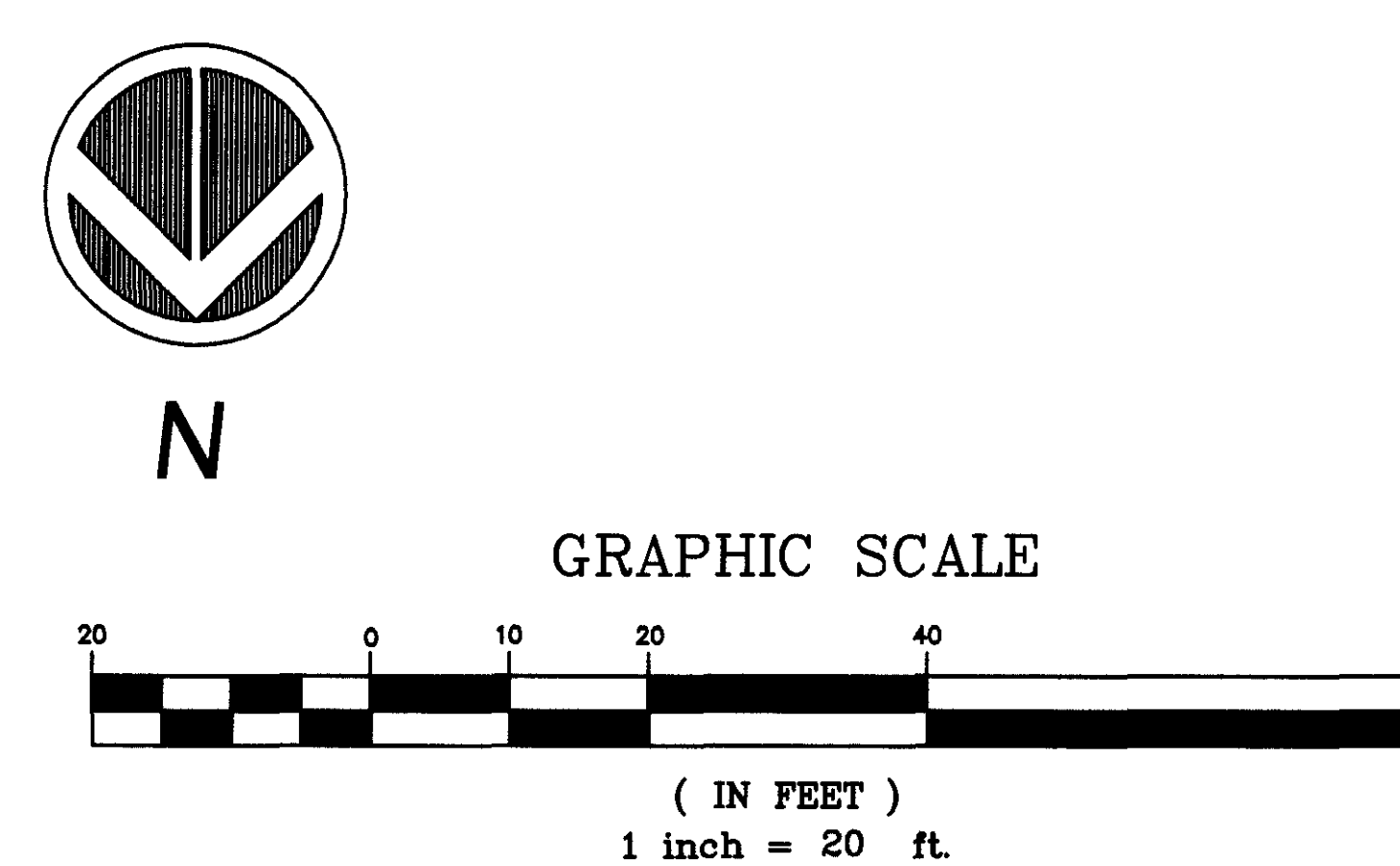
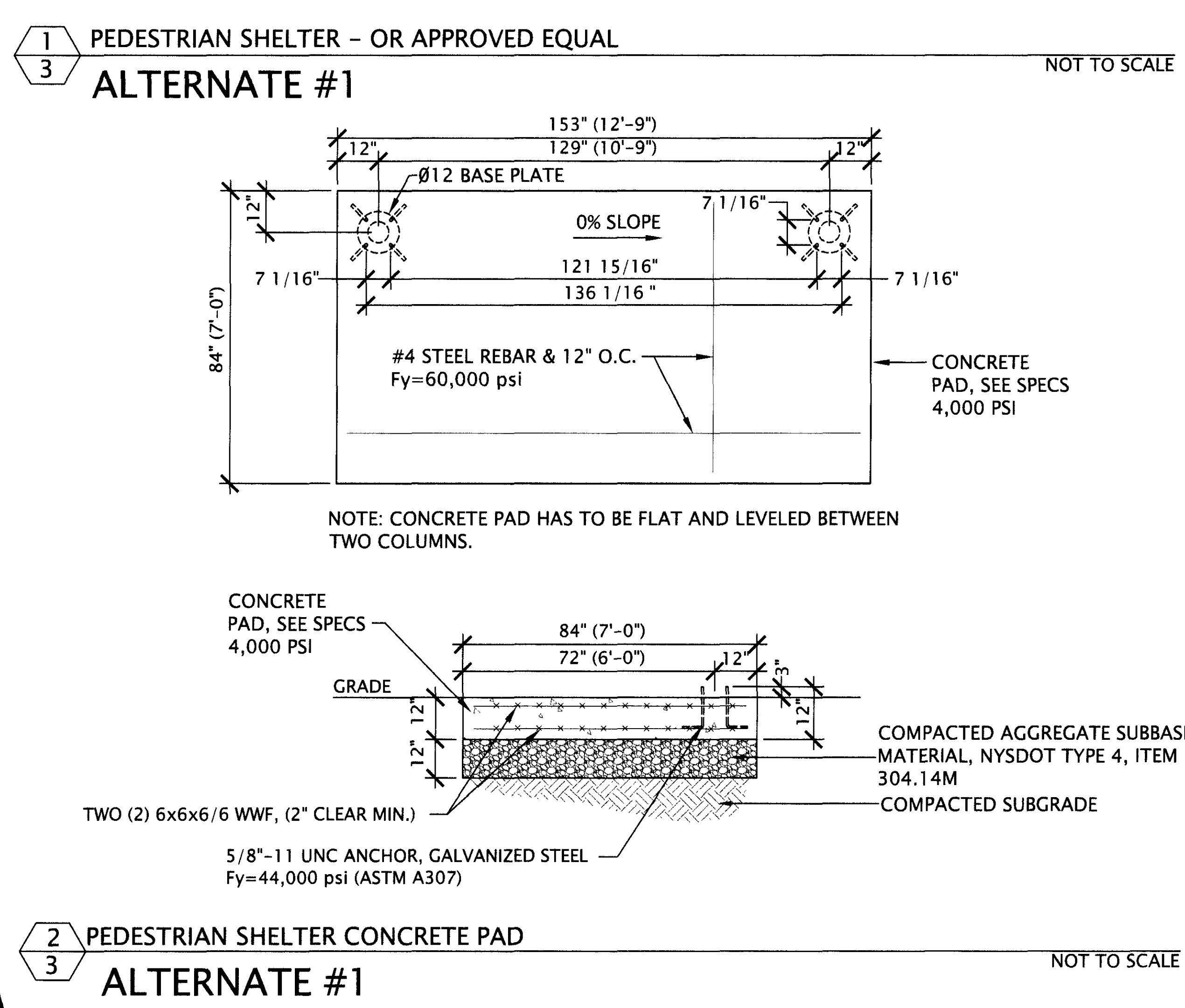
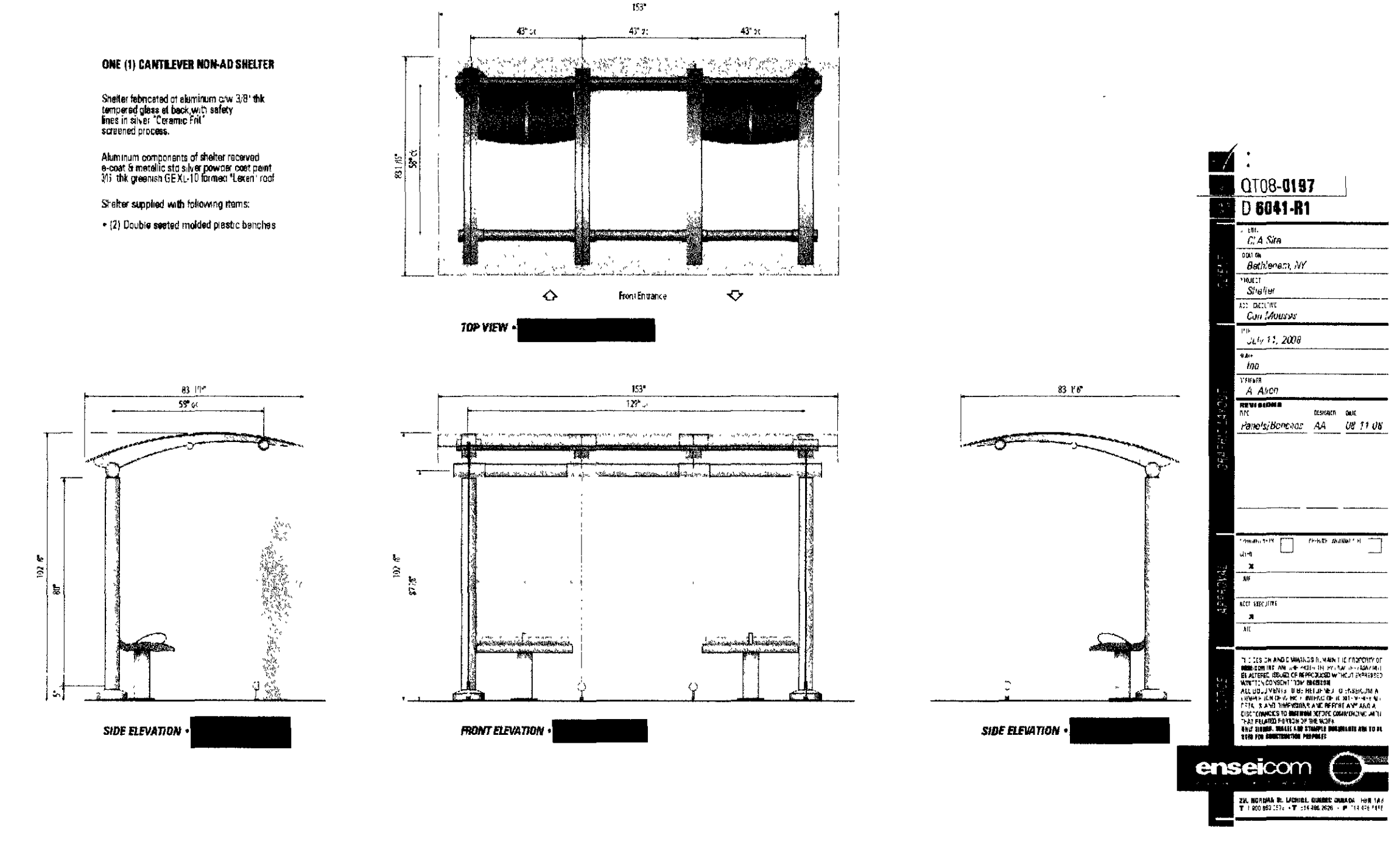
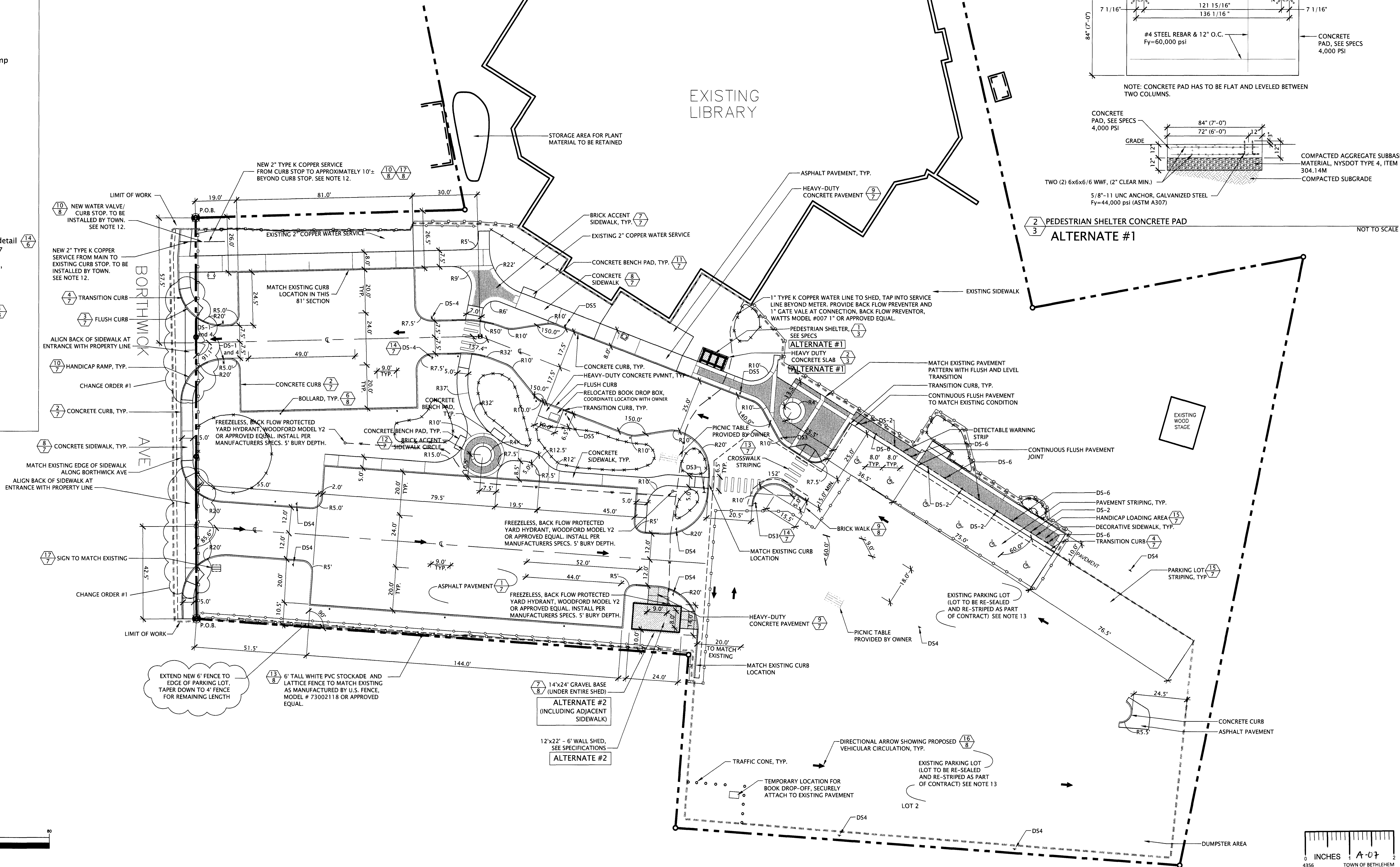
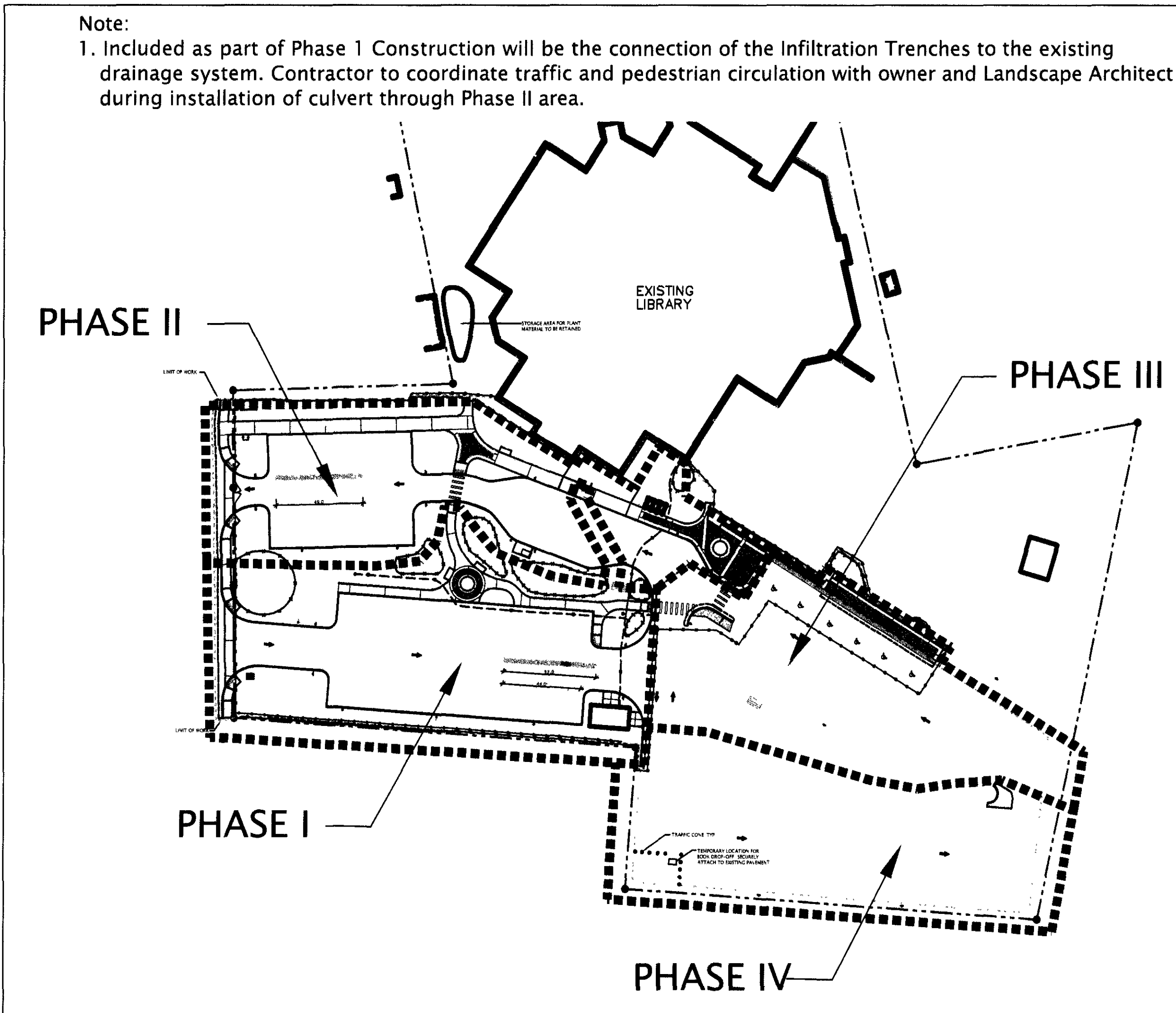
Layout & Materials Notes

- Additional layout information may be provided by Landscape Architect upon request prior to staking and construction.
- All work must conform to all Federal, State and Municipal codes, specifications, ordinances, rules and regulations.
- Point of Beginning is indicated on plans.
- Confirm locations for all above and below ground utilities with City.
- Contractor must request a site meeting with Landscape Architect to review staking prior to any construction activities.
- All dimensions to face of curb or building unless otherwise noted.
- All dimensions are at 90° from face unless otherwise noted.
- Contractor shall verify existing conditions in the field prior to commencement of work and notify the owner's representatives of any discrepancies affecting the work.
- Contractor is responsible to repair or replace all items damaged outside construction limits or disturbed on site which are not part of the identified work of this contract.
- Should anything be omitted from the plans which is necessary for a complete understanding of the work, or should any error appear in the various instruments furnished or in the work by other Contractors affecting the work covered hereby, the Contractor shall and will promptly notify the Owner's Representative, and in the event of the Contractor's failure to do so, he shall and will make good any damage or defect in his work caused thereby.
- See CLA-6 for lighting and electrical layout.
- Contractor to coordinate street closure and water interruption with Town prior to commencing water line work. Contractor to submit Tap Request and coordinate the replacement of the Curb Box, Curb Stop and water line connection to water main with the Town.
- Contractor to avoid operating heavy machinery on Infiltration Trench locations prior to installation. Install construction fencing around areas to protect areas.

Legend

	Contract Limit Line
	Point of Beginning
	Flush Curb/Transition Curb
	Brick Accent Sidewalk
	Handicap Accessible Curb Ramp
	Concrete Sidewalk and Curb
	Reserved Parking
	Access Aisle
	Crosswalk
	Proposed Sign to Match Existing
	Pedestrian Canopy
	Directional Signage, Refer to detail for message of signs DS1-DS7
	Proposed Parking Lot Lighting, See Lighting Plan, CLA-6
	Proposed water service
	Proposed electrical service
	Tree Protection Fence
	Silt Fence
	Chain Link Construction Fence
	New PVC Stockade Fence
	Pavement Sawcut Line

Phasing Diagram



Date	8-28-08
Checked By	PAL
Drawn By	SEM
Revision	Revisions per NYSED Comments
Revision Number	1
Revision	Revisions per Bethlehem Library
Revision Number	2
Revision	Revisions per Bethlehem Library
Revision Number	3
Revision	Change Order #1 Borthwick Sidewalk Addition
Revision Number	4
Designed By	PAL
Drawn By	MJS
Checked By	PAL
Approved By	PAL
Filename	
Project No.	80-409
Project Date	08-08-08
BETHLEHEM PUBLIC LIBRARY PARKING AND CIRCULATION IMPROVEMENTS SED CONTROL NO. 01-03-06-06-021-007 451 DELAWARE AVENUE BETHLEHEM, NEW YORK	
LAYOUT PLAN	
Landscape Architecture, Engineering & Planning, P.C. 151 Lake Ave. Scarsdale, NY 10864 Phone: 914/884-8661 Fax: 914/884-8661	
Sheet No.	3 of 8
Drawing No.	CLA-3