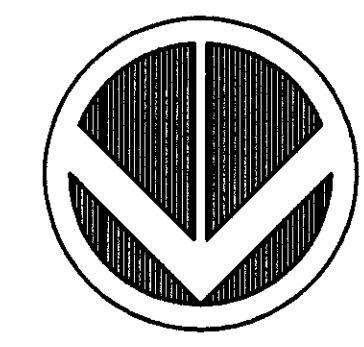


Grading & Drainage Notes

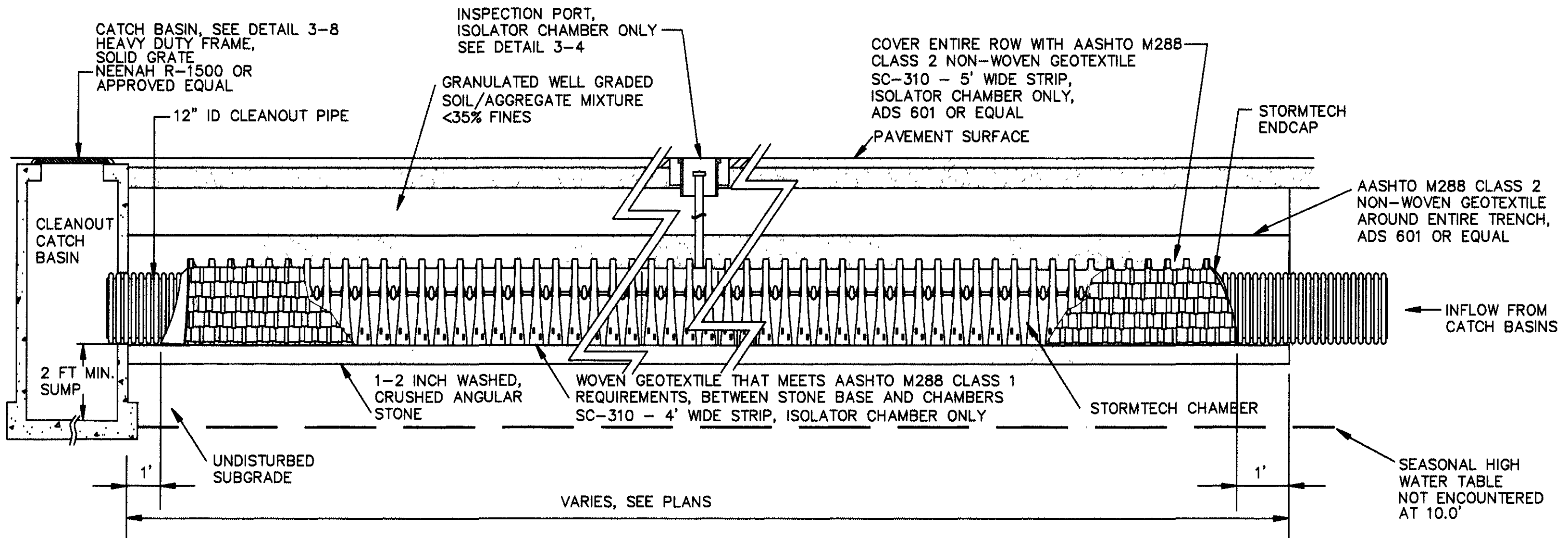
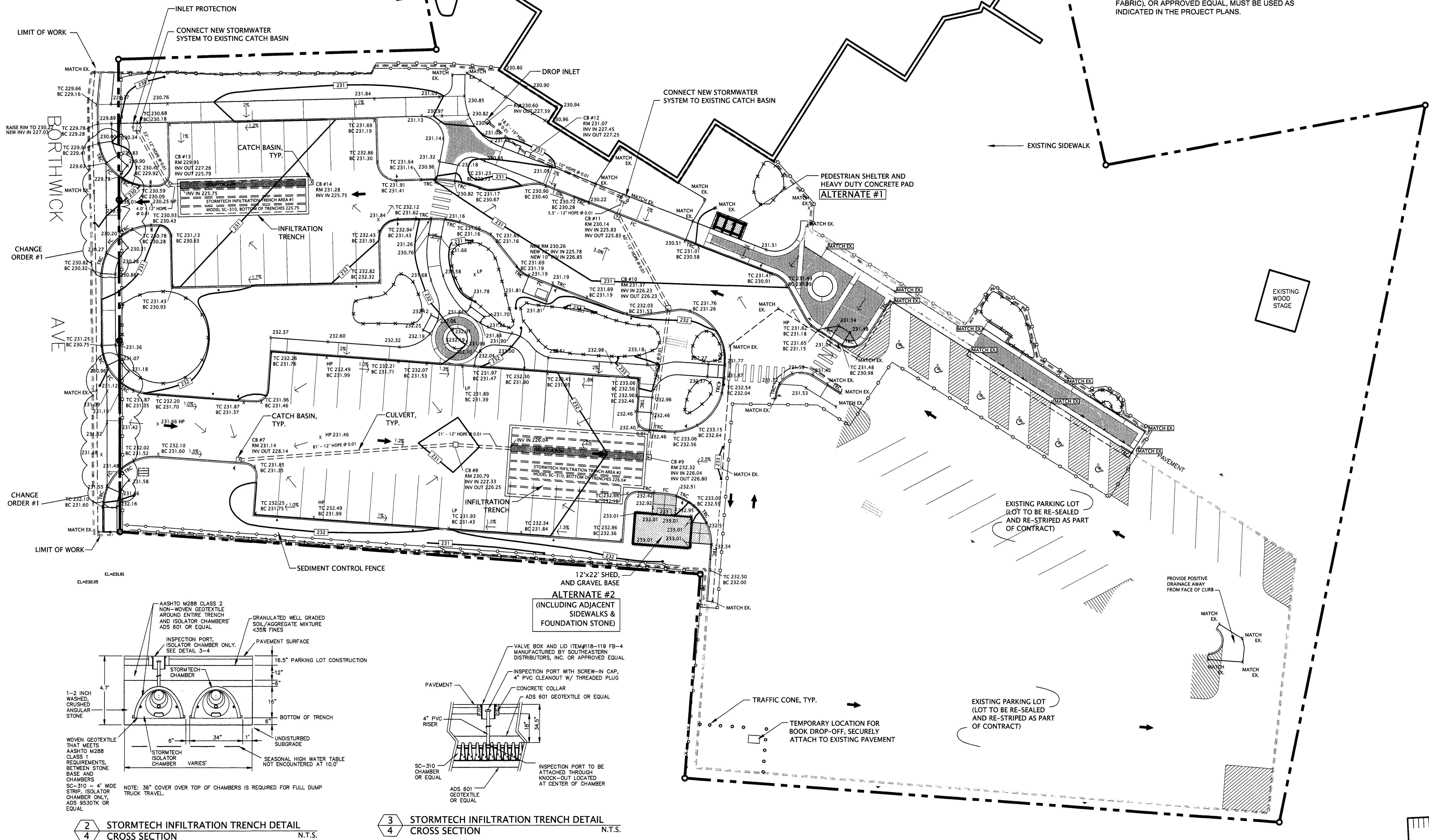
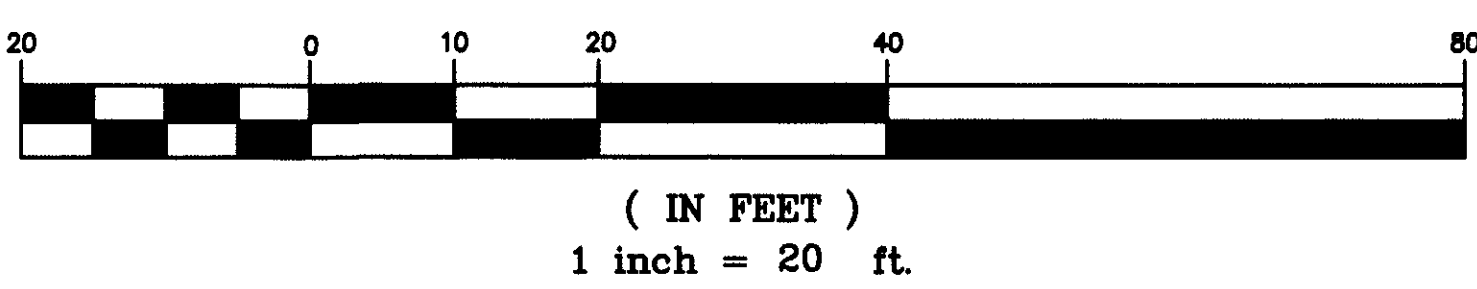
- All points of construction ingress or egress shall be maintained to prevent tracking or flowing of sediment or debris onto a public road. Contractor to provide a Stabilized Construction Entrance, see detail 11-8.
- During grading operations, drainage of the site and adjacent areas shall be maintained continuously to prevent erosion or other damage. When it is necessary to interrupt drainage or other existing utilities, provide temporary facilities until permanent work is completed.
- Accessible Sidewalk Ramps not to exceed 8% longitudinal slope and not to exceed 2% cross slope as per drawings, specifications and regulations. All other sidewalks and crosswalks shall also not exceed 2% cross slope.
- All stormwater structures within the property limits will be maintained by the Bethlehem Town Library.
- Excavation required within 3 feet of existing utility lines and trees to be saved shall be done by hand; do not excavate soil with machinery. Contractor shall repair any damage to existing utility lines or structures incurred during construction operations at no additional cost to Owner.
- Grade areas adjacent to building lines to drain away from structure and prevent ponding. Finish surfaces shall be free from irregular surface changes.
- Should anything be omitted from the plans which is necessary for a complete understanding of the work, or should any error appear in the various instruments furnished or in the work by other Contractors affecting the work covered hereby, the Contractor shall and will promptly notify the Owner's Representative, and in the event of the Contractor's failure to do so, he shall and will make good any damage or defect in his work caused thereby.
- Existing pavement drainage conditions may necessitate modification of proposed grades as shown. All proposed field adjustments must be reviewed and approved by Landscape Architect.
- Sidewalks to have maximum 2% cross slope.
- Accessible areas (reserved parking spaces and access aisles) to have maximum 2% slope in any direction.
- Transitions from all new pavements to existing pavements shall be smooth and flush.
- Refer to plan for specific grades and elevations.
- After all disturbed areas have been stabilized and the final inspection has been performed by the owner's representative, remove all remaining temporary erosion and sediment control devices.
- See CLA-8 for more grading plan details.
- Contractor to avoid operating heavy machinery on Infiltration Trench locations prior to installation. Install construction fencing around areas to protect areas.

Legend

- Property Line
- Flush Curb/Transition Curb
- Decorative Pavement
- Handicap Accessible Curb Ramp
- Concrete Sidewalk and Curb
- Reserved Parking
- Access Aisle
- Crosswalk
- Proposed Sign to Match Existing
- Pedestrian Canopy
- Existing Contour
- Proposed Contour
- Drainage Direction
- Catch Basin
- Infiltration Trench
- Proposed Parking Lot Lighting
- Directional Signage
- Water Service
- Proposed electrical service
- Tree Protection Fence
- Silt Fence
- Chain Link Construction Fence
- Pavement Sawcut Line



GRAPHIC SCALE



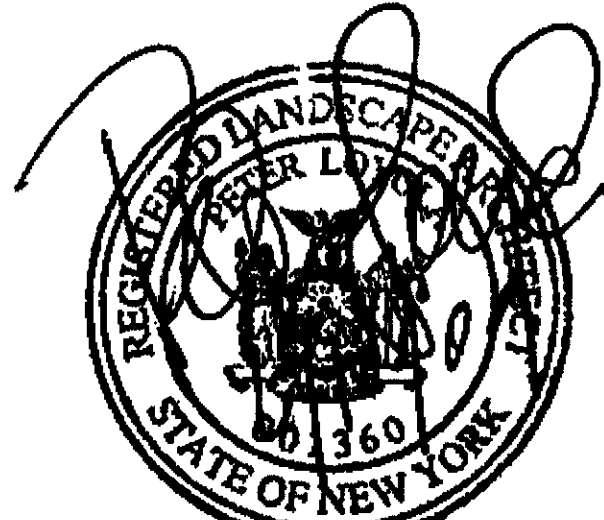
1 STORMTECH INFILTRATION TRENCH DETAIL (NO SURFACE WATER DISCHARGE)
4 LONGITUDINAL SECTION

N.T.S.

Stormtech General Notes

- STORMTECH LLC ("STORMTECH") REQUIRES INSTALLING CONTRACTORS TO USE AND UNDERSTAND STORMTECH'S LATEST INSTALLATION INSTRUCTIONS PRIOR TO BEGINNING SYSTEM INSTALLATION.
- OUR TECHNICAL SERVICES DEPARTMENT OFFERS INSTALLATION CONSULTATIONS TO INSTALLING CONTRACTORS. CONTACT OUR TECHNICAL SERVICES REPRESENTATIVE AT LEAST 30 DAYS PRIOR TO SYSTEM INSTALLATION TO ARRANGE A PRE-INSTALLATION CONSULTATION. OUR REPRESENTATIVES CAN THEN ANSWER QUESTIONS OR ADDRESS COMMENTS ON THE STORMTECH CHAMBER SYSTEM AND INFORM THE INSTALLING CONTRACTOR OF THE MINIMUM INSTALLATION REQUIREMENTS BEFORE BEGINNING THE SYSTEM'S CONSTRUCTION. CALL 1-888-892-2694 TO SPEAK TO A TECHNICAL SERVICE REPRESENTATIVE OR VISIT WWW.STORMTECH.COM TO RECEIVE A COPY OF OUR INSTALLATION INSTRUCTIONS.
- STORMTECH'S REQUIREMENTS FOR SYSTEMS WITH PAVEMENT DESIGN (ASPHALT, CONCRETE PAVERS, ETC.): MINIMUM COVER IS 18 INCHES NOT INCLUDING PAVEMENT; MAXIMUM COVER IS 96 INCHES INCLUDING PAVEMENT. FOR INSTALLATIONS THAT DO NOT INCLUDE PAVEMENT, WHERE RUTTING FROM VEHICLES MAY OCCUR, MINIMUM REQUIRED COVER IS 24 INCHES, MAXIMUM COVER IS 96 INCHES.
- THE CONTRACTOR MUST REPORT ANY DISCREPANCIES WITH CHAMBER FOUNDATION MATERIALS BEARING CAPACITIES TO THE DESIGN ENGINEER.
- AASHTO M288 CLASS 2 NON-WOVEN GEOTEXTILE (FILTER FABRIC), OR APPROVED EQUAL, MUST BE USED AS INDICATED IN THE PROJECT PLANS.
- STONE PLACEMENT BETWEEN CHAMBERS ROWS AND AROUND PERIMETER MUST FOLLOW INSTRUCTIONS AS INDICATED IN THE MOST CURRENT VERSION OF STORMTECH'S INSTALLATION INSTRUCTIONS.
- BACKFILLING OVER THE CHAMBERS MUST FOLLOW REQUIREMENTS AS INDICATED IN THE MOST CURRENT VERSION OF STORMTECH'S INSTALLATION INSTRUCTIONS.
- THE CONTRACTOR MUST REFER TO STORMTECH'S INSTALLATION INSTRUCTIONS FOR A TABLE OF ACCEPTABLE VEHICLE LOADS AT VARIOUS DEPTHS OF COVER. THIS INFORMATION IS ALSO AVAILABLE AT STORMTECH'S WEBSITE: WWW.STORMTECH.COM. THE CONTRACTOR IS RESPONSIBLE FOR PREVENTING VEHICLES THAT EXCEED STORMTECH'S REQUIREMENTS FROM TRAVELING ACROSS OR PARKING OVER THE STORMWATER SYSTEM. TEMPORARY FENCING, WARNING TAPE AND APPROPRIATELY LOCATED SIGNS ARE COMMONLY USED TO PREVENT UNAUTHORIZED VEHICLES FROM ENTERING SENSITIVE CONSTRUCTION AREAS.
- THE CONTRACTOR MUST APPLY EROSION AND SEDIMENT CONTROL MEASURES TO PROTECT THE STORMWATER SYSTEM DURING ALL PHASES OF SITE CONSTRUCTION PER LOCAL CODES AND DESIGN ENGINEER'S SPECIFICATIONS.
- STORMTECH PRODUCT WARRANTY IS LIMITED. SEE CURRENT PRODUCT WARRANTY FOR DETAILS. TO ACQUIRE A COPY CALL STORMTECH AT 1-888-892-2694 OR VISIT WWW.STORMTECH.COM.

REVISION NUMBER	REVISION DESCRIPTION	Drawn By	Checked By	Date
1	Revisions per NYSED Comments	SEM	PAL	8-28-08
2	Revisions per Bethlehem Library	SEM	PAL	4-29-09
3	Revisions per Bethlehem Library	SEM	PAL	5-29-09
4	Change Order #1 Bordwalk Sidewalk Addition	SEM	PAL	7-14-09



BETHLEHEM PUBLIC LIBRARY
PARKING AND CIRCULATION IMPROVEMENTS
451 DELAWARE AVENUE
DELMAR, NEW YORK

GRADING & DRAINAGE PLAN

CLASITE
Landscape Architecture,
Engineering & Planning, P.C.
157 Lake Ave. Scitopus Springs, NY 12864
Phone: 518/584-8661 Fax: 518/584-8661

Sheet No. 4 of 8

Drawing No.

CLA-4