

Planting & Lighting Notes

- All plants to meet minimum standards of the American Association of Nurseryman.
- Take every precaution to avoid damage to any vegetation to remain.
- Contractor shall refer to Existing Conditions survey and verify all utilities in the field prior to construction.
- Plants shall be delivered only as they can be installed in reasonable time. All plants are subjected to inspection at delivery by Landscape Architect.
- Where planting beds and lawn areas meet separate with 4" black aluminum edging, anchored with 14"-18" metal stakes. See Detail 8-5.
- Plants shall be sized and type shown or noted on schedule.
- Location of all planting to be verified by Landscape Architect.
- Contractor shall guarantee all planted materials a minimum of 1 year time.
- Contractor shall maintain all work including watering and protection from traffic until final acceptance of the project.
- Contractor is responsible to repair or replace all items damaged outside construction limits or disturbed on site which are not part of the identified work of this contract.
- See specifications for amended topsoil and mulch.
- In planting areas currently covered with pavement, remove all construction debris and soil to a depth of 3'-0" and replace with specified topsoil. For planting areas currently within lawn areas, remove soil to a depth of 12" and replace with specified topsoil.
- Trees and large shrubs to be retained shall be balled-and-burlapped and stored in the location shown on the plans. Smaller shrubs can be temporarily transplanted in the area shown. Keep plant material watered until time for transplanting. Mulch-in root balls and root zones if weather gets cold.
- All relocated plant material is accounted for on the demolition plan with the exception of (2) Mugho Pine and (2) Gold Tip Junipers. Coordinate location of additional junipers and pines with owner.

Legend

Contract Limit Line

Proposed Shrubs

Proposed Evergreen Tree

Proposed Small Tree

Proposed Shade Tree

Lupinus perennis mix

Rudbeckia hirta 18" O.C.

Prepared Planting Bed (Unplanted)

Lawn Area

Accent River Stone, See Specs

Proposed water service

Proposed electrical service

Planting Bed Perimeter

Proposed Parking Lot Lighting

Plant List

Deciduous Trees - # Total				
Qty	Key	Scientific Name	Common Name	Size
3	AP	Acer platanoides 'Crimson King'	Norway Maple	2.5-3" cal.
1	BP	Betula papyrifera	Paperbark Birch	12"-14"
1	FP	Fraxinus pennsylvanica 'Patmore'	Green Ash	2.5-3" cal.
2	NS	Nyssa sylvatica	Black Tupelo	3-3.5" cal.
1	QA	Quercus alba	Northern White Oak	3-3.5" cal.
2	RP	Robinia pseudoacacia	Black Locust	2.5-3" cal.
Small Flowering Trees - # Total				
Qty	Key	Scientific Name	Common Name	Size
4	CC	Cercis canadensis 'Forest Pansy'	Forest Pansy Redbud	8-10'
1	MS	Magnolia soulangiana	Saucer Magnolia	5-6'
Deciduous Shrubs - # Total				
Qty	Key	Scientific Name	Common Name	Size
12	CA	Cornus alba 'sibirica'	Red Twig Dogwood	3 gal.
5	CAL	Clethra alnifolia	Hummingbird Summersweet	3 gal.
5	HA	Hydrangea arborescens 'Annabelle'	Annabelle Hydrangea	3 gal.
3	PO	Physocarpus opulif. 'Summer Wine'	Summer Wine Ninebark	3 gal.
3	SB	Spiraea bumalda 'Anthony Waterer'	Anthony Waterer Spirea	3 gal.
1	VT	Viburnum trilobum	American Cranberrybush Viburnum	5 gal.
6	PF	Potentilla fruticosa white	Bush Cinquefoil white	2 gal.
Evergreen Shrubs - # Total				
Qty	Key	Scientific Name	Common Name	Size
4	JC	Juniperus chinensis 'Gold Tip'	Gold Tip Juniper	3 gal.
13	MD	Micorbiota decussata	Siberian Carpet Cypress	3 gal.
Groundcovers/ Perennials - # Total				
Qty	Key	Scientific Name	Common Name	Size
28		Rudbeckia hirta ssp.	Black-eyed Susan	4" pot

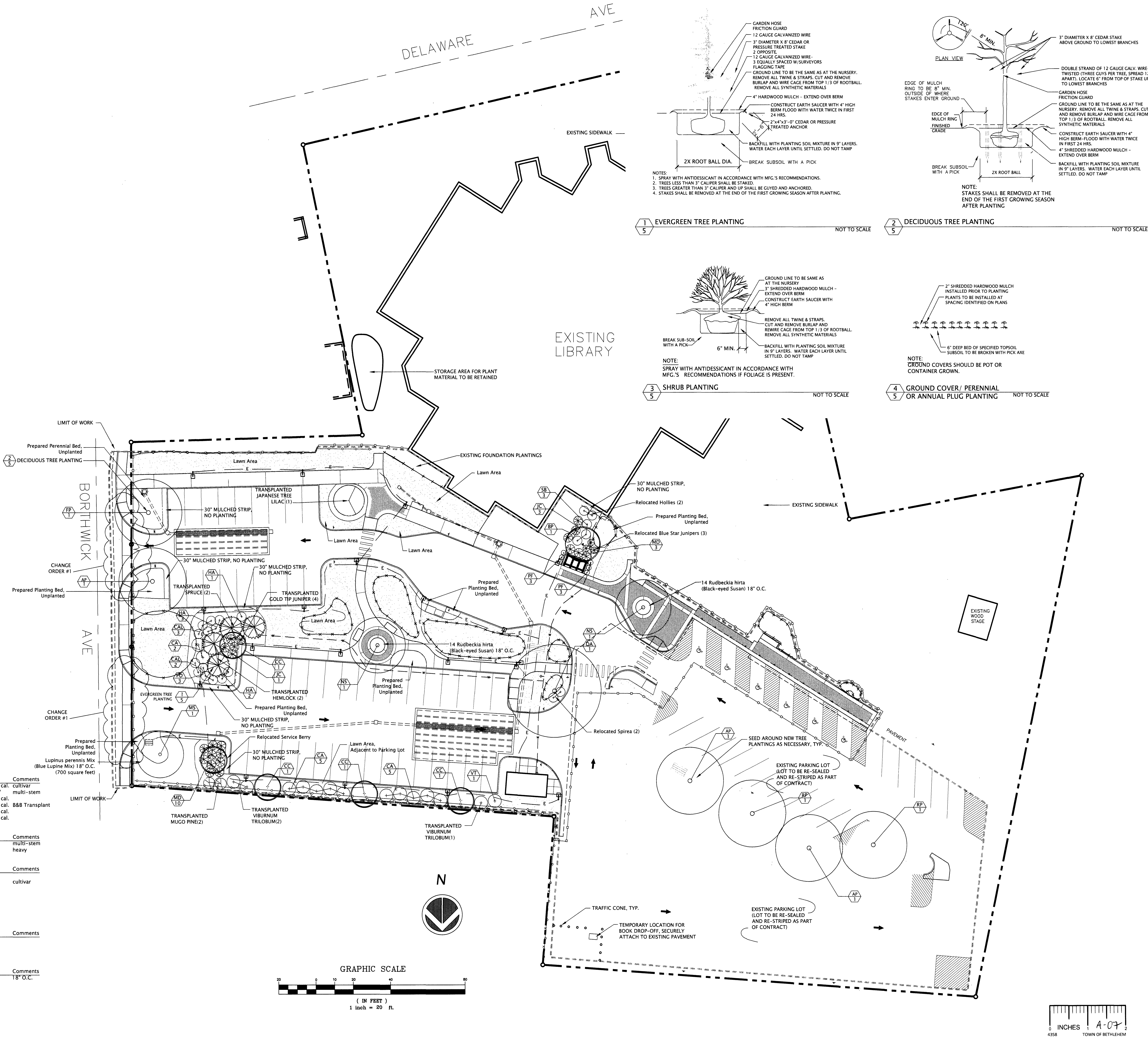
Lupinus Perennis Mix (covering 700 SF) to consist of the follow plants - planted 30" O.C.

32% Lupinus Perennis - Blue Lupine


12% Vaccinium angustifolium - Low Bush Blueberry

24% Comptonia peregrina- Sweet Fern

32% Schizachyrium scoparium - Little Bluestem




REVISION DESCRIPTION		Drawn By	Checked By	Date
1	Revisions per NYSED Comments	SEM	PAL	8-28-08
2	Revisions per Bethlehem Library	SEM	PAL	5-29-09
3	Change Order #1 Borthwick Sidewalk Addition	SEM	PAL	7-14-09
Designed By	PAL			
Drawn By	SEM			
Checked By	PAL			
Approved By	PAL			
Filename				
Project No.	80-409			
Project Date	08-08-08			



**BETHLEHEM PUBLIC LIBRARY**  
**PARKING AND CIRCULATION IMPROVEMENTS**  
SED CONTROL NO: 01-03-06-06-021-007  
**451 DELAWARE AVENUE**  
**DELMAR, NEW YORK**

**PLANTING PLAN**



Landscape Architecture,  
Engineering & Planning, P.C.  
157 Lake Ave. Saratoga Springs, NY 12866  
Phone: 518/584-8461 Fax: 518/584-8461

Sheet No. **5 of 8**

Drawing No. **CLA 5**