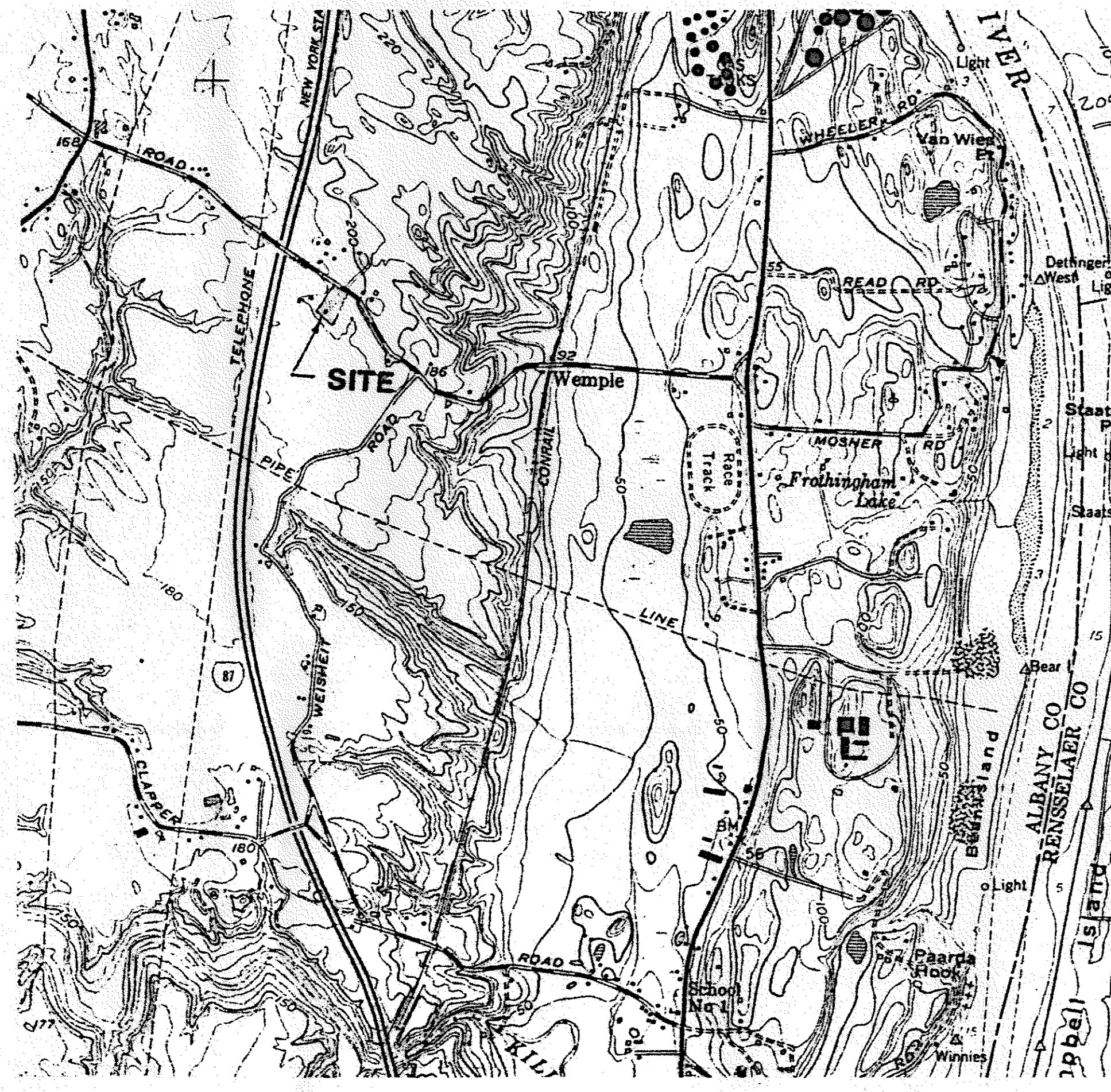


REGISTERED
AUG - 5 1988
PLANNING BOARD
TOWN OF BETHLEHEM

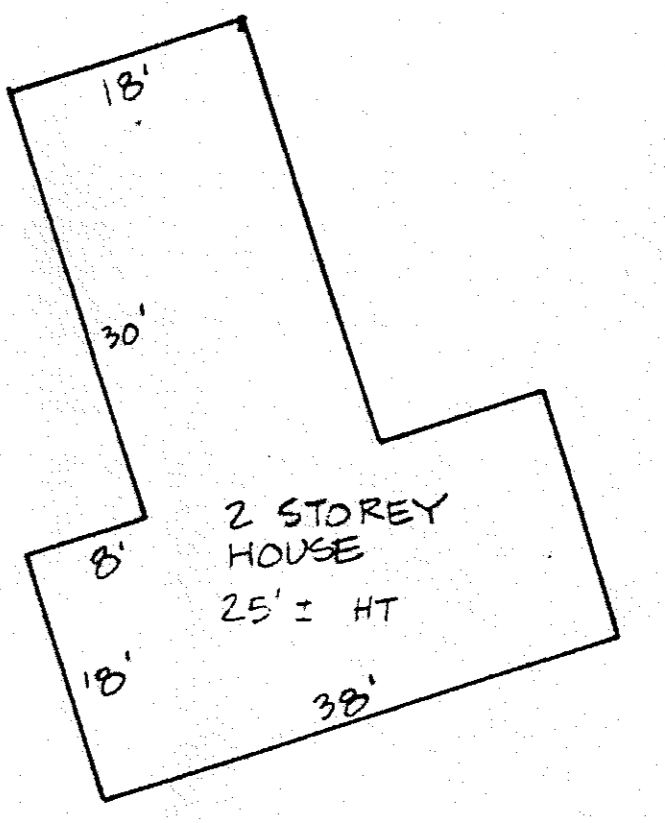
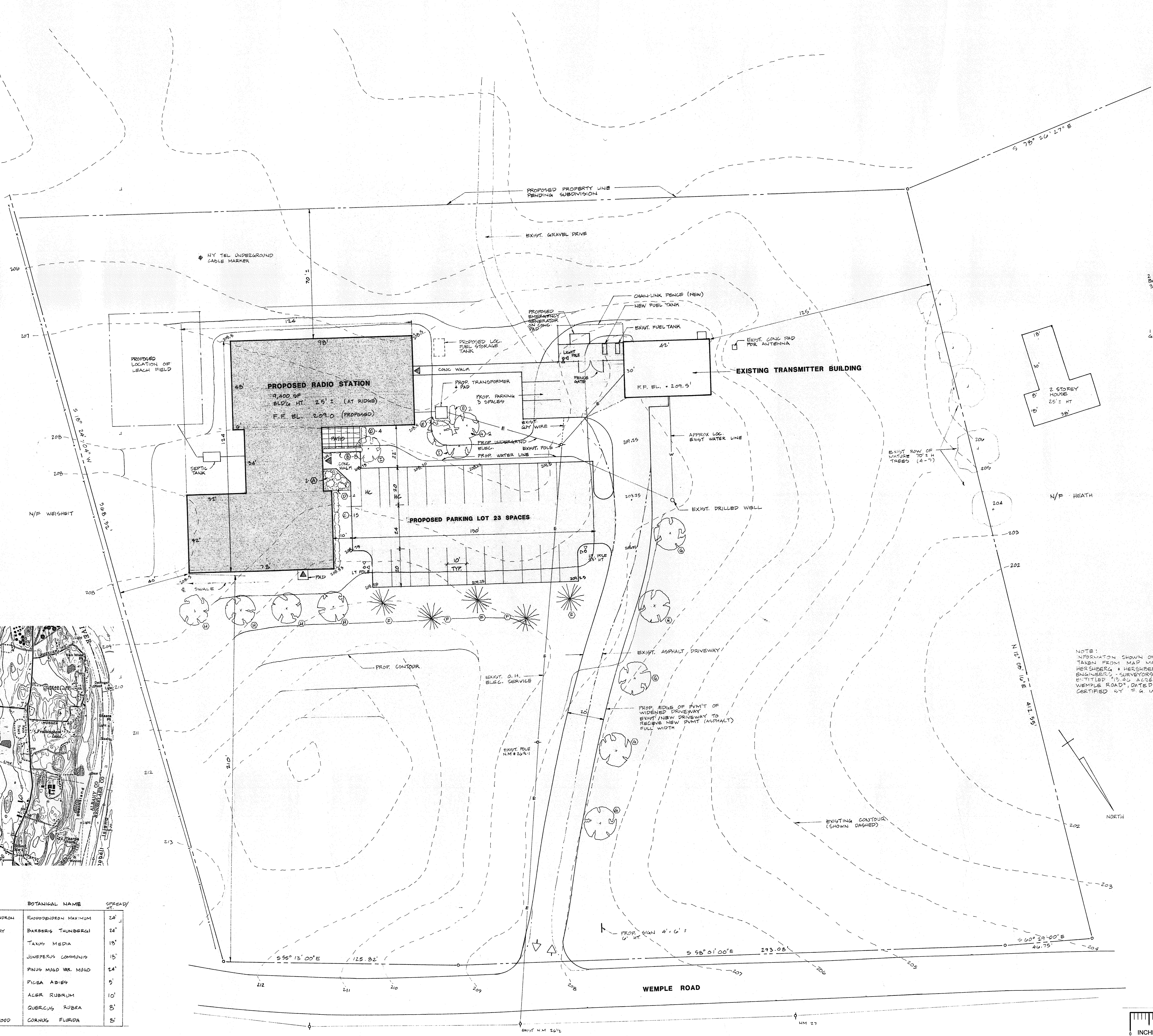
ROBERT C. KURZON AIA
ARCHITECTS
90 STATE STREET
ALBANY, NEW YORK 12207
518-468-3492

SITE LOCATION MAP



PLANTING SCHEDULE

TYPE	SYM.	TAG	COMMON NAME	BOTANICAL NAME	SPREAD/HT.
CONIFER	(Symbol)	A	ROXBURY RHODODENDRON	RHODODENDRON MAXIMUM	24'
DECIDUOUS	(Symbol)	B	JAPANESE BARBERRY	BARBERIS THUNBERGII	24'
CONIFER	(Symbol)	C	ANGLOJAP YEW	TAXUS MEDIA	15'
CONIFER	(Symbol)	D	COMMON JUNIPER	JUNIPERUS COMMUNIS	15'
CONIFER	(Symbol)	E	DWARF MUGO PINE	PINUS MUGO VAR. MUGO	24'
CONIFER	(Symbol)	F	NORWAY SPRUCE	PICEA ADIES	5'
DECIDUOUS	(Symbol)	G	RED MAPLE	ACER RUBRUM	10'
DECIDUOUS	(Symbol)	H	RED OAK	QUERCUS RUBRA	8'
DECIDUOUS	(Symbol)	I	FLOWERING DOGWOOD	CORNUS FLORIDA	5'



2 STORY BARN 30' HT.

1 STORY GARAGE 15' HT.

NOTE: INFORMATION SHOWN ON THIS DRAWING TAKEN FROM MAP MADE BY HERSCHEBERG & HERSCHEBERG, CONSULTING ENGINEERS & SURVEYORS, ALBANY, NY ENTITLED "12.40 ACRE PARCEL ON WEMPLE ROAD", DATED 7/8/85. CERTIFIED BY S. A. McCLUSKEY, L.L.S.

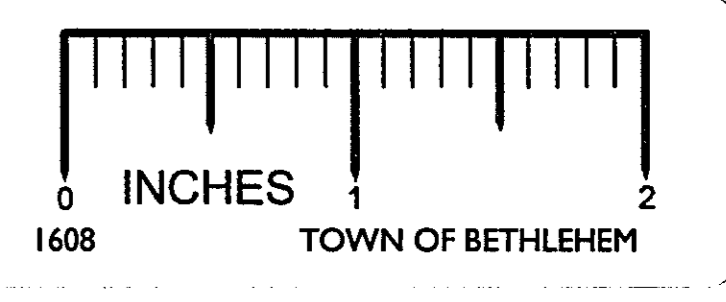
OWNER:
RADIO TERRACE OF ALBANY
NORTHERN BOULEVARD, ALBANY, N.Y. 12204

WROW RADIO STATION
WEMPLE ROAD, GLENTON, NY

PROPOSED SITE PLAN

by A.F.	scale 1" = 20'
ckd. R.C.K.	rvd.
app.	issue
no.	date 7-27-85

SD 2



PROPOSED SITE PLAN

1" = 20'-0"

J-22