

COLLINS+SCOVILLE ARCHITECTS, P.C.

40 Beaver St., Albany
New York 12207-1511
518463.8068 FAX 518463.8069

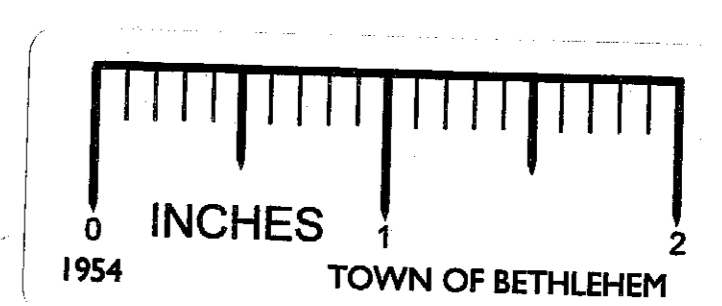
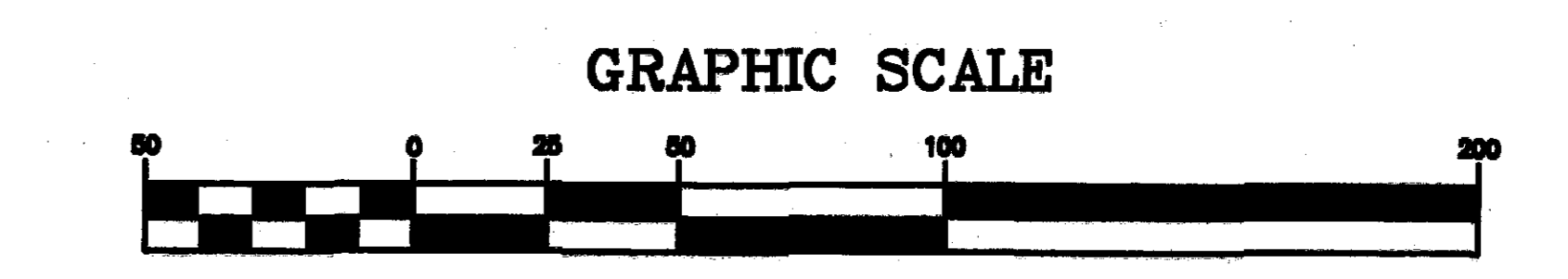
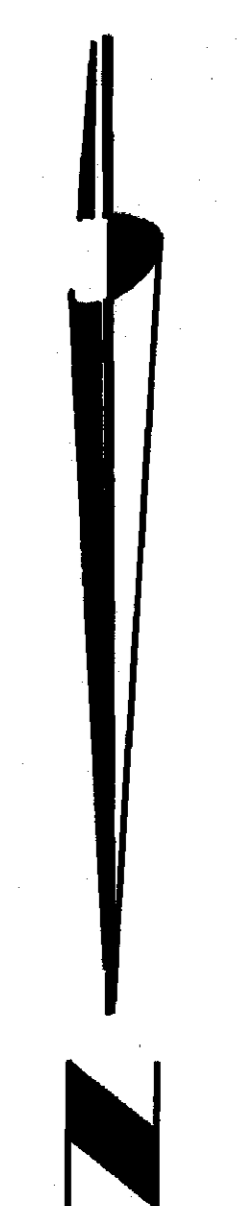
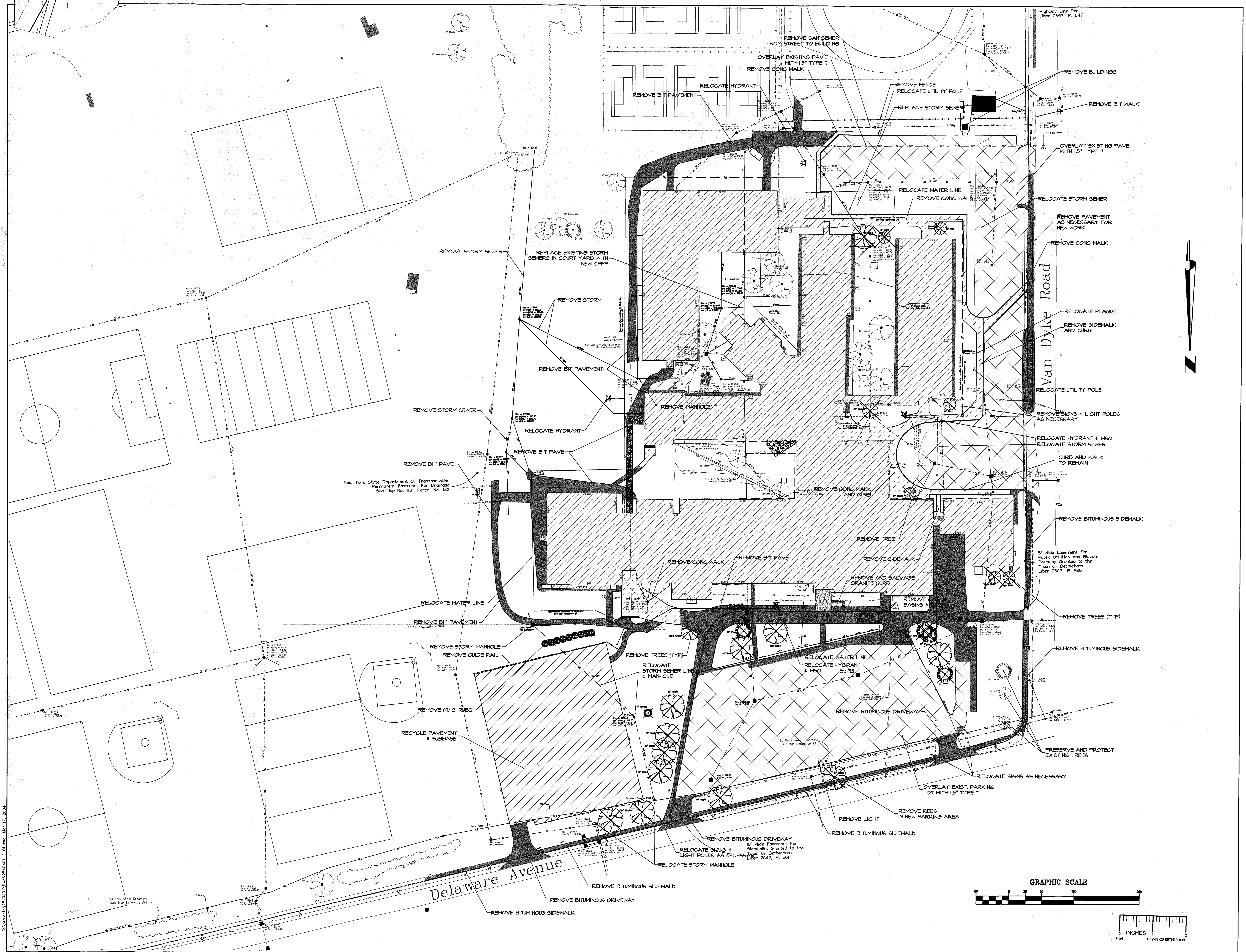
Consultant



CLARK

300 W. 10th Street, Suite 200
Bethlehem, PA 18018
610-748-1111

BETHLEHEM CENTRAL SCHOOL DISTRICT
BETHLEHEM HIGH SCHOOL
ADDITIONS AND ALTERATIONS



Project Title

Table with 4 columns: No., Date, Revision, By. It contains a grid for tracking project changes.

Drawn By: JCP
Checked By:
Proj: 01-03-06-00-0-006-024
CSA Project # 03124-00
Date: 3/14/04

Sheet Title
EXISTING CONDITIONS & REMOVALS PLAN

Sheet No.

C101
V-27

S:\Projects\24-040\Draw\24-040-C101.dwg, Mar 17, 2004