

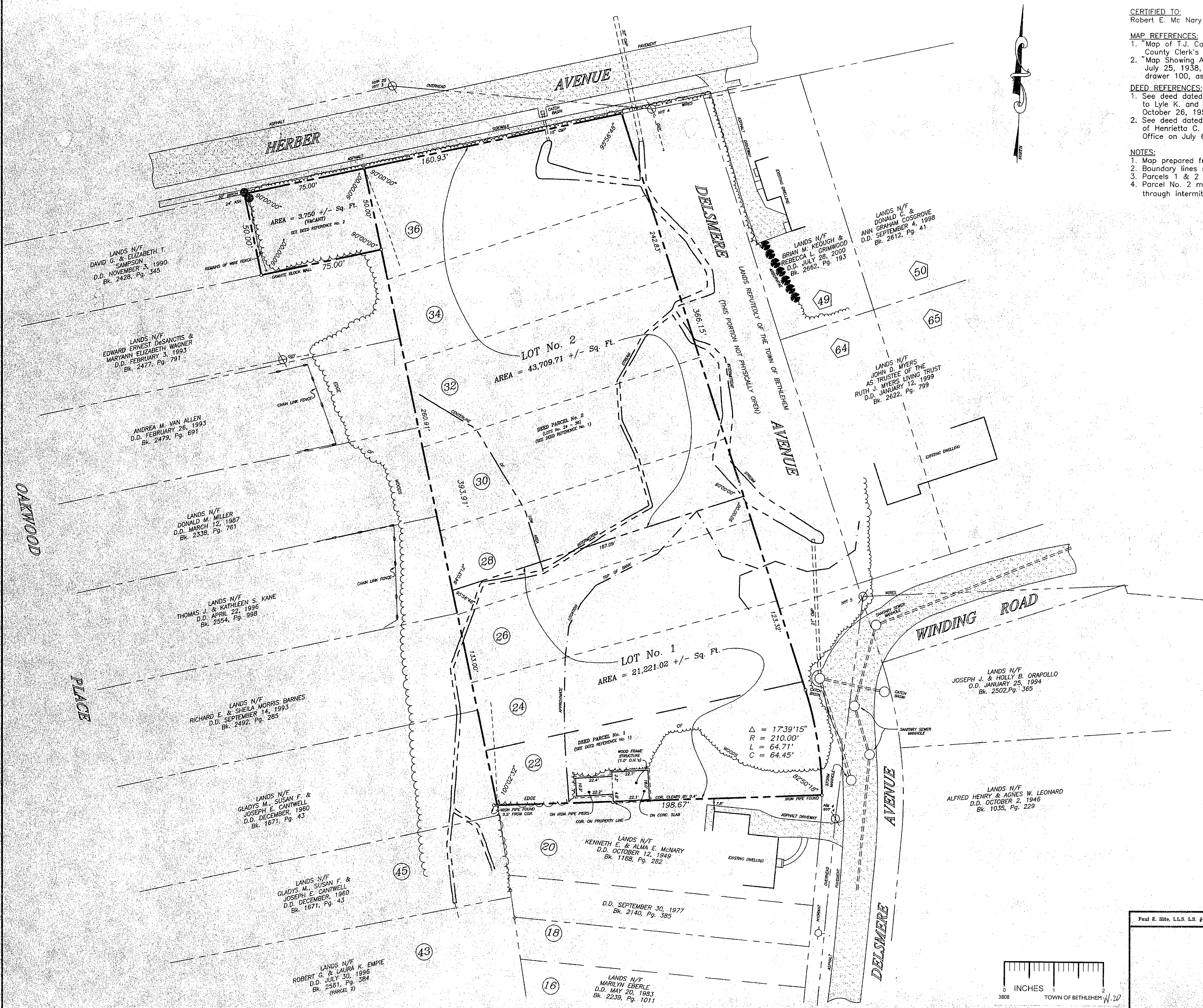
CERTIFICATION:
Survey shown is in accordance with the minimum standards of "Code of Practice For Land Surveys" as adopted by the New York State Association of Professional Land Surveyors.

CERTIFIED TO:
Robert E. McNary

MAP REFERENCES:
1. "Map of T.J. Carrick Estate" dated June 5, 1915, by A.L. Fisher, C.E., as filed in the Albany County Clerk's Office on July 3, 1915, in closet 2, drawer 31, as map no. 212.
2. "Map Showing A Subdivision of Lands of John Herber, as Revised by E.L. Gibson, C.E." dated July 25, 1936, as filed in the Albany County Clerk's Office on September 13, 1938 in drawer 100, as map no. 738.

DEED REFERENCES:
1. See deed dated September 23, 1954 from Dorothy W. Oliver (formerly Dorothy W. McNary) to Lyle K. and Dorothy W. Oliver, as recorded in the Albany County Clerk's Office on October 26, 1954, in Book 1423 of deeds, at Page 27.
2. See deed dated June 15, 1979 from Frank J. Luddy, as Administrator of the Estate of of Henrietta C. Holt to Robert E. McNary, as recorded in the Albany County Clerk's Office on July 6, 1979 in Book 2171 of deeds, at Page 1155.

NOTES:
1. Map prepared from an accurate field survey, and deeds and maps of record.
2. Boundary lines shown hereon are as deeded, monumented and occupied.
3. Parcels 1 & 2 subject to restrictions contained in Book 1423, Page 27.
4. Parcel No. 2 may subject to rights of the Town of Bethlehem and others to drain through intermittent streams as shown hereon.



MAP OF SURVEY
LANDS OF
LYLE K. and DOROTHY W. OLIVER
& ROBERT E. McNARY
HERBER AVENUE & DELSMERE AVENUE
TOWN OF BETHLEHEM

COUNTY:	ALBANY
STATE:	NEW YORK
SCALE:	1" = 30'
DATE:	JULY 18, 2001
DRAWN BY:	PHD
MAP NO.:	623S

MAP PREPARED BY:
PAUL E. HITE
LICENSED LAND SURVEYOR
230 DELAWARE AVENUE
DELMAR, NEW YORK 12054
(518) 439-4989