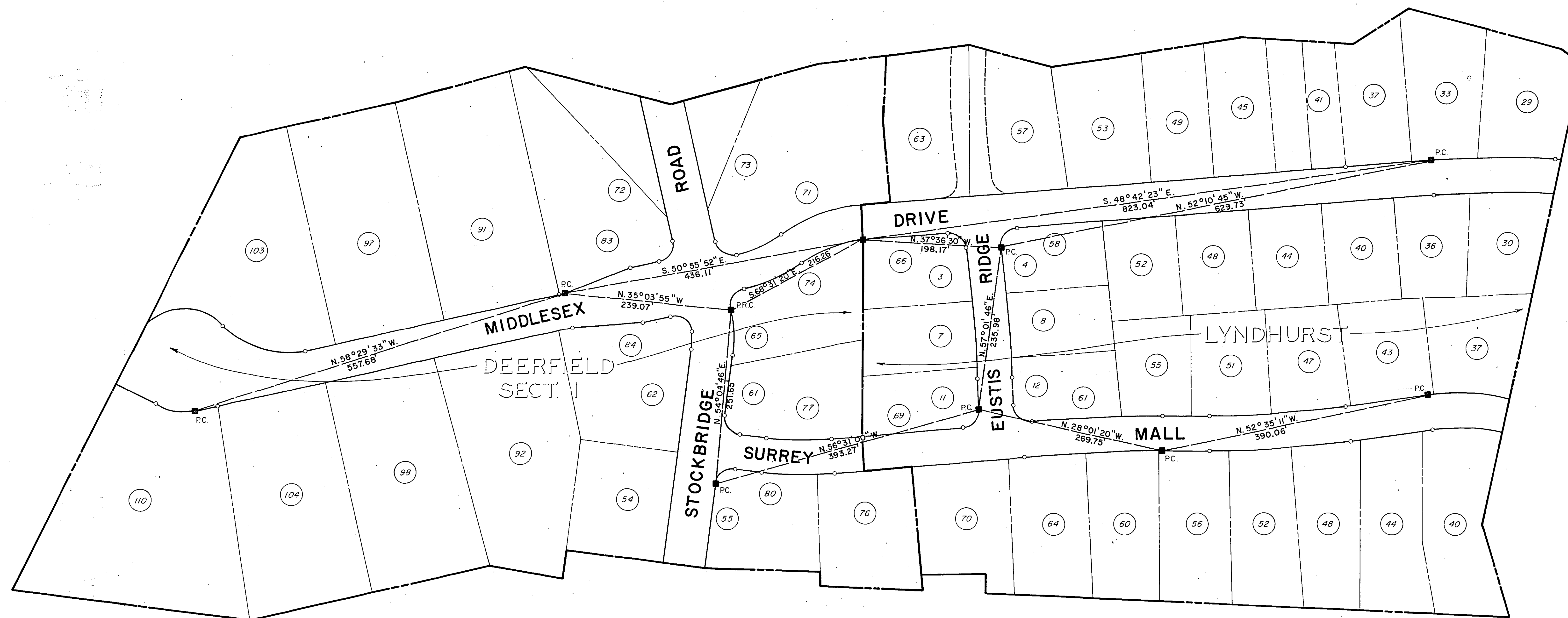


SITE LOCATION MAP
NOT TO SCALE

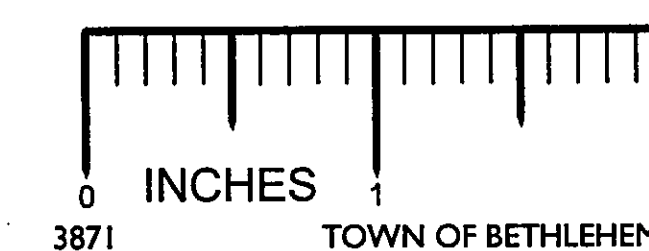


MAP REFERENCES:

- 1) "DEERFIELD SECTION NO. 1," DATED MAY 16, 1984, LAST REDATED FEB. 8, 1985, MADE BY C.T. MALE ASSOCIATES, P.C. AND FILED IN THE ALBANY COUNTY CLERKS OFFICE ON APRIL 24, 1985 AS MAP NO. 6237 IN DRAWER 172.
- 2) "MAP OF LYNDHURST TO BE DEVELOPED BY: ROSEN MICHAELS, INC." DATED AUGUST 5, 1980, LAST DATED JANUARY 5, 1983 AND FILED IN THE ALBANY COUNTY CLERKS OFFICE ON JANUARY 10, 1983 IN DRAWER 172 AS MAP NO. 5925.
- 3) "REVISED LOTS 57 & 63 MIDDLESEX DRIVE, LYNDHURST, TOWN OF BETHLEHEM, COUNTY OF ALBANY, DATED APRIL 24, 1985, LAST REVISED MAY 30, 1985; BY C.T. MALE ASSOCIATES, P.C. AND FILED IN THE ALBANY COUNTY CLERKS OFFICE ON JUNE 13, 1985 AS MAP NO. 6261 IN DRAWER 172.

LEGEND:

■ - DENOTES MONUMENT SET



RECEIVED
MAR 24 1988

DATE	RECORD OF WORK	Drawn	Check	Appr
3/18/88	MONUMENTS SET	MR.H.	W.S.J.	W.S.J.

William H. Hutton
C.T. MALE ASSOCIATES, P.C.
© 1988

Map of Location of Monuments DEERFIELD - Section I and LYNDHURST	
TOWN OF BETHLEHEM	COUNTY OF ALBANY, NY
C. T. MALE ASSOCIATES, P.C. 50 Century Hill Drive, P.O. Box 727, Latham, NY 12110 (518) 785-0976	
Engineering Surveying Architecture Landscape Architecture Laboratory Services Computer Services	

Drafter: M.R.H. Checker: W.S.J. Appr. by: C.J.D. DATE: FEB. 26, 1988 SCALE: 1" = 100' PROJ. NO. 86.2237 SHEET 1 OF 1 DWG. NO.

UNAUTHORIZED ALTERATION OR ADDITION TO
THIS DOCUMENT IS A VIOLATION OF SECTION
7209 SUBDIVISION 2 OF THE NEW YORK STATE
EDUCATION LAW.

Copies of this survey map not bearing an embossed seal of an officer of
C.T. MALE ASSOCIATES, P.C. or a designated representative shall
not be considered to be a valid true copy.