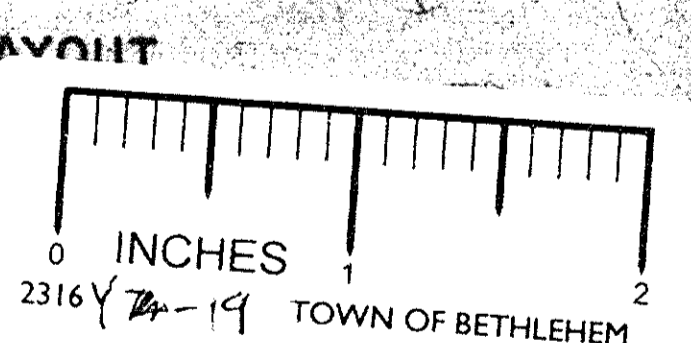
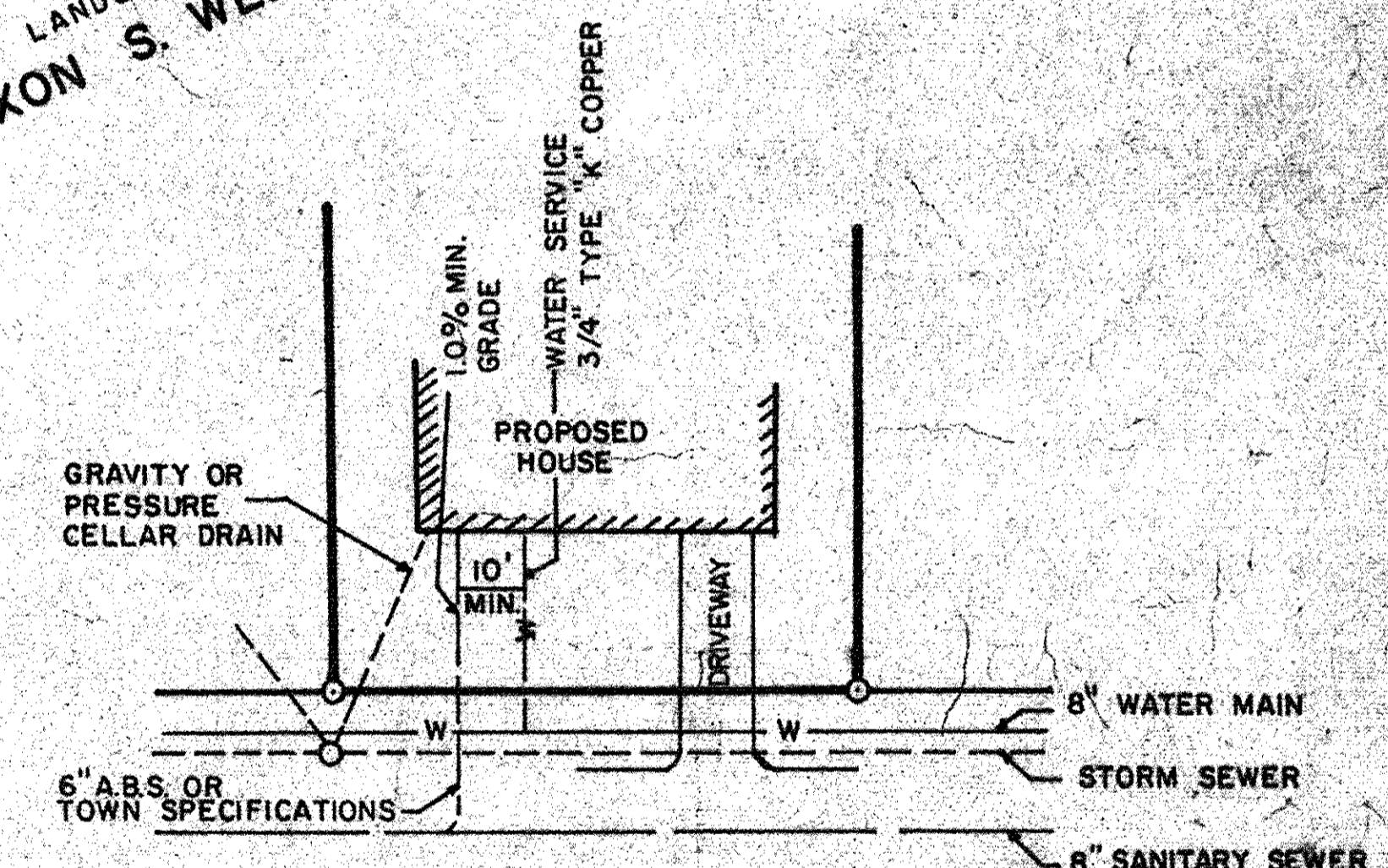
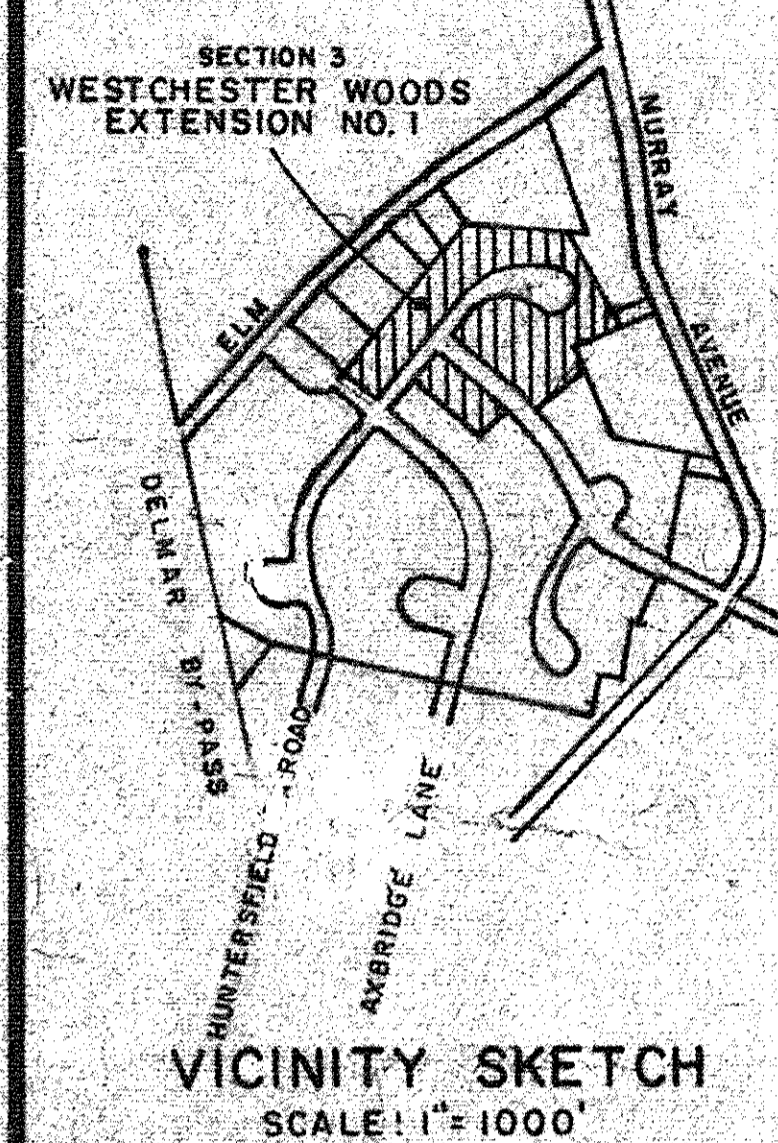
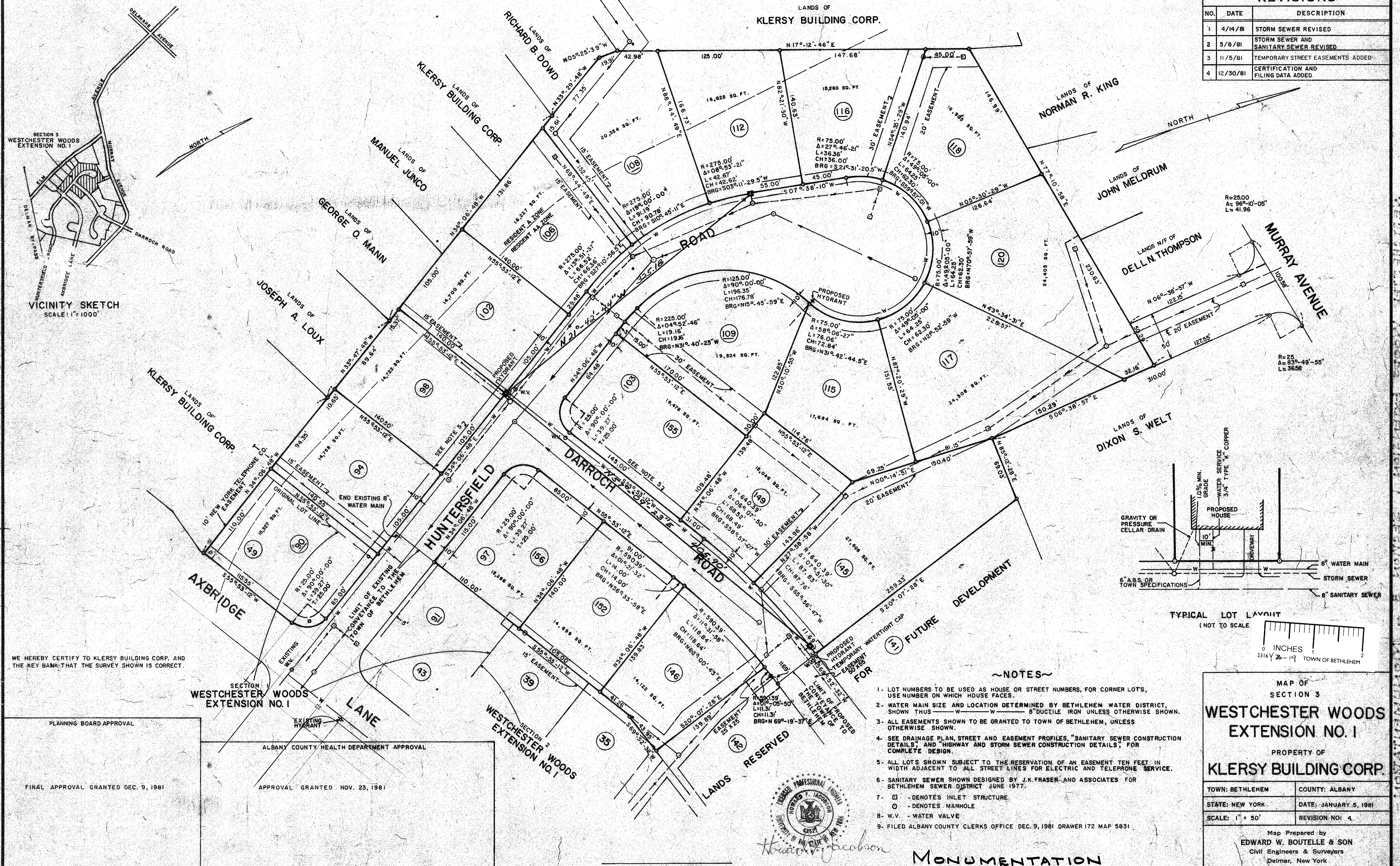


REVISIONS		
NO.	DATE	DESCRIPTION
1	4/14/81	STORM SEWER REVISED
2	5/8/81	STORM SEWER AND SANITARY SEWER REVISED
3	11/5/81	TEMPORARY STREET EASEMENTS ADDED
4	12/30/81	CERTIFICATION AND FILING DATA ADDED



WE HEREBY CERTIFY TO KLERSY BUILDING CORP. AND THE KEY BANK THAT THE SURVEY SHOWN IS CORRECT.

PLANNING BOARD APPROVAL

FINAL APPROVAL GRANTED DEC. 9, 1981

ALBANY COUNTY HEALTH DEPARTMENT APPROVAL

APPROVAL GRANTED NOV. 23, 1981

- ~NOTES~
- LOT NUMBERS TO BE USED AS HOUSE OR STREET NUMBERS, FOR CORNER LOTS, USE NUMBER ON WHICH HOUSE FACES.
 - WATER MAIN SIZE AND LOCATION DETERMINED BY BETHLEHEM WATER DISTRICT, SHOWN THUS $\text{---} \text{---} \text{---}$ 8" DUCTILE IRON UNLESS OTHERWISE SHOWN.
 - ALL EASEMENTS SHOWN TO BE GRANTED TO TOWN OF BETHLEHEM, UNLESS OTHERWISE SHOWN.
 - SEE DRAINAGE PLAN, STREET AND EASEMENT PROFILES, "SANITARY SEWER CONSTRUCTION DETAILS", AND "HIGHWAY AND STORM SEWER CONSTRUCTION DETAILS", FOR COMPLETE DESIGN.
 - ALL LOTS SHOWN SUBJECT TO THE RESERVATION OF AN EASEMENT TEN FEET IN WIDTH ADJACENT TO ALL STREET LINES FOR ELECTRIC AND TELEPHONE SERVICE.
 - SANITARY SEWER SHOWN DESIGNED BY J.K. FRASER AND ASSOCIATES FOR BETHLEHEM SEWER DISTRICT JUNE 1977.
 - \square - DENOTES INLET STRUCTURE
 - \circ - DENOTES MANHOLE
 - W.V. - WATER VALVE
 - FILED ALBANY COUNTY CLERKS OFFICE DEC. 9, 1981 DRAWER 172 MAP 5831



Edward W. Boutelle

MONUMENTATION

MAP OF SECTION 3 WESTCHESTER WOODS EXTENSION NO. 1 PROPERTY OF KLERSY BUILDING CORP.

TOWN: BETHLEHEM COUNTY: ALBANY
 STATE: NEW YORK DATE: JANUARY 5, 1981
 SCALE: 1" = 50' REVISION NO: 4

Map Prepared by EDWARD W. BOUTELLE & SON Civil Engineers & Surveyors Delmar, New York

SHEET OF: FILE NO:

REC'D DEC 7, 1982

LINDSAY M. BOUTELLE LICENSE NO. 23987